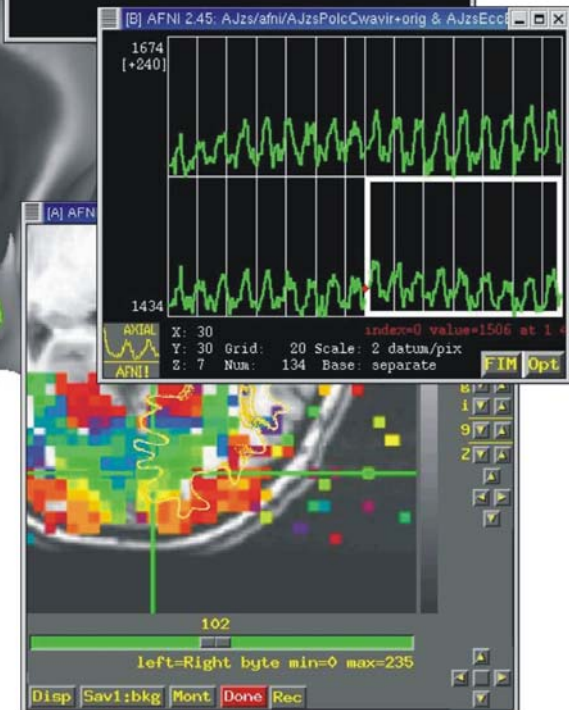
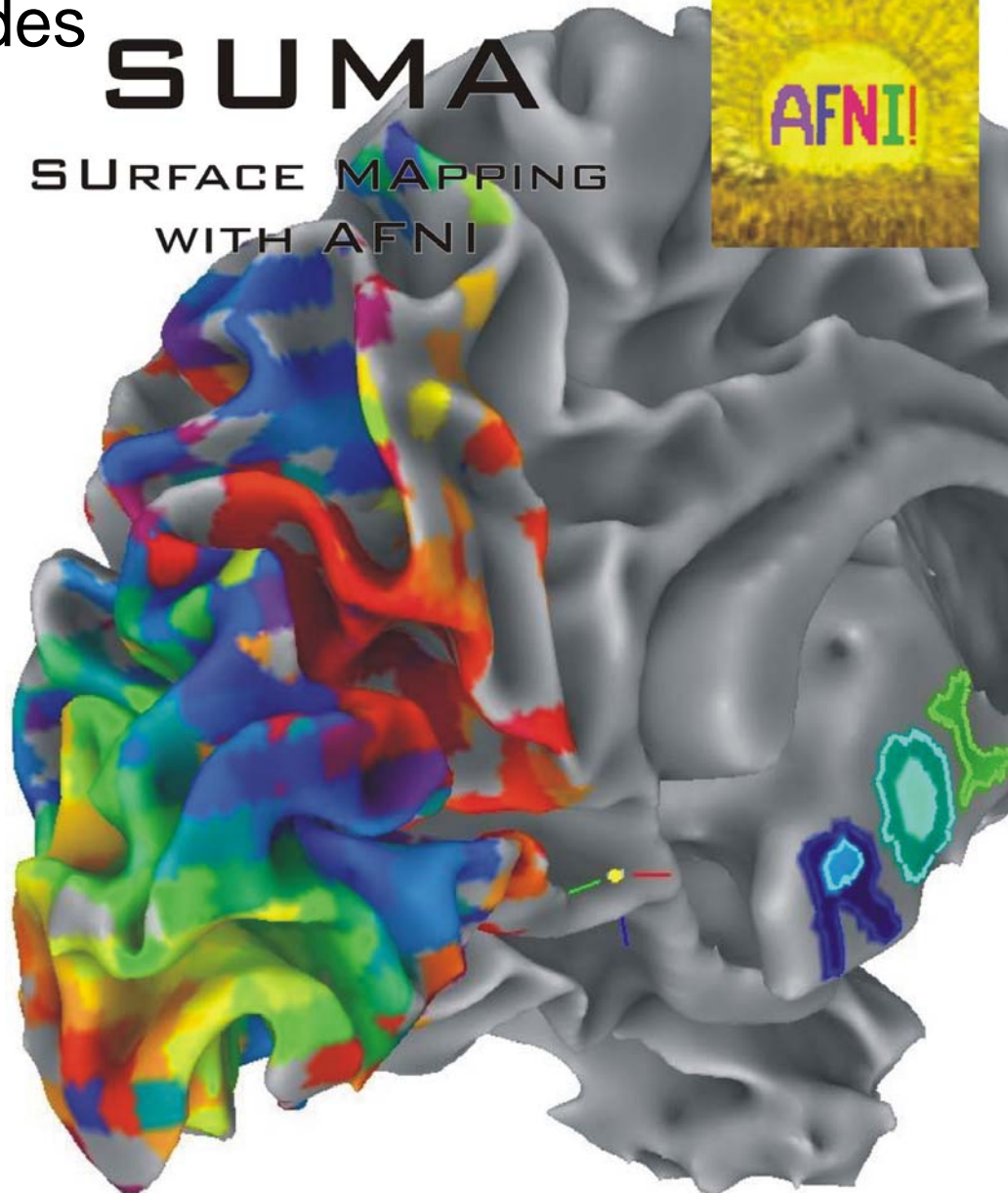


SUMA tour:

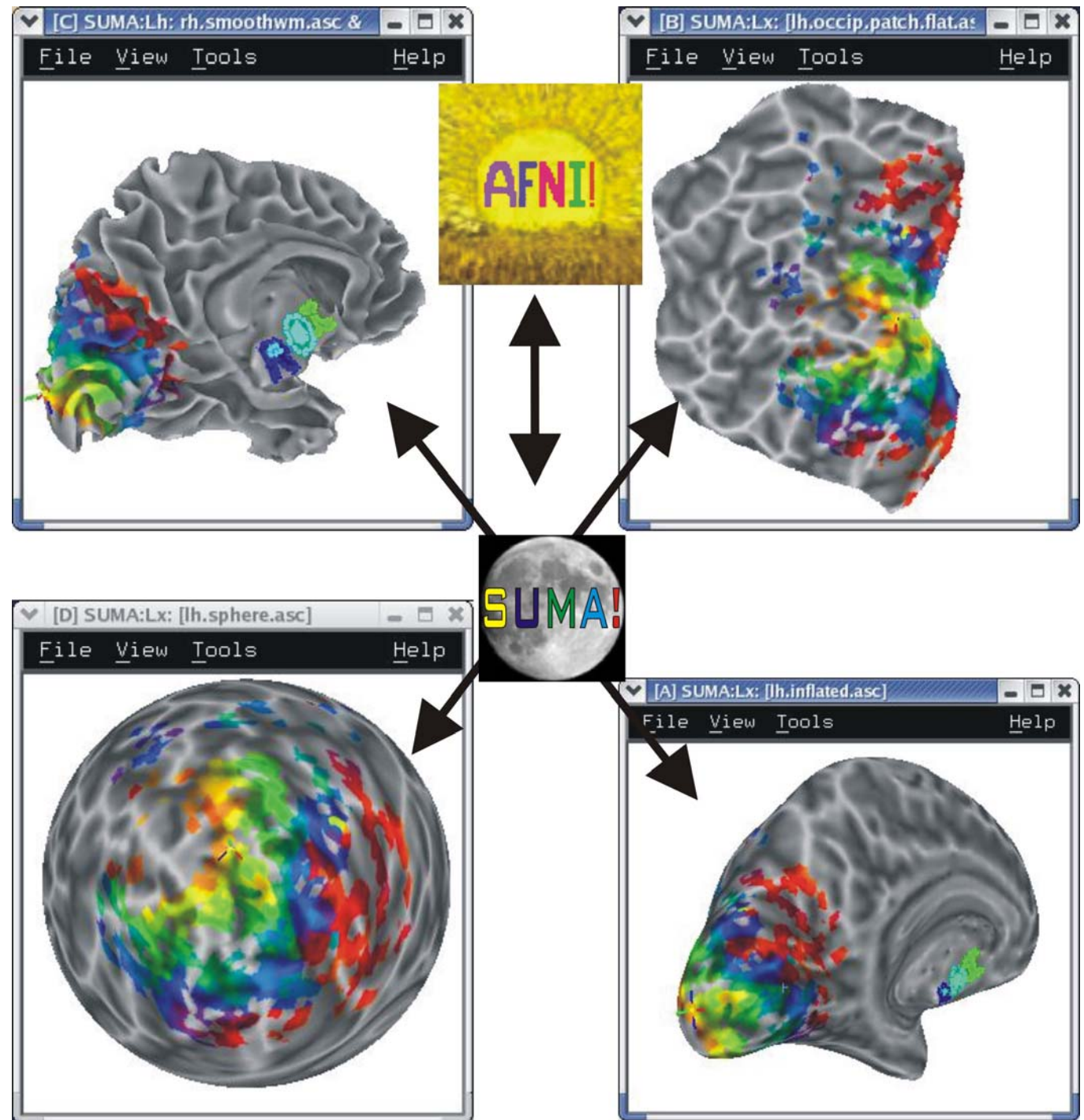
- Surface viewing with direct link to all AFNI's rendering modes

SUMA
SURFACE MAPPING
WITH AFNI



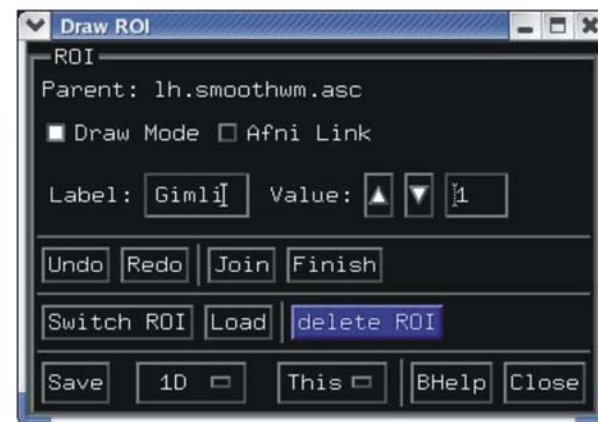
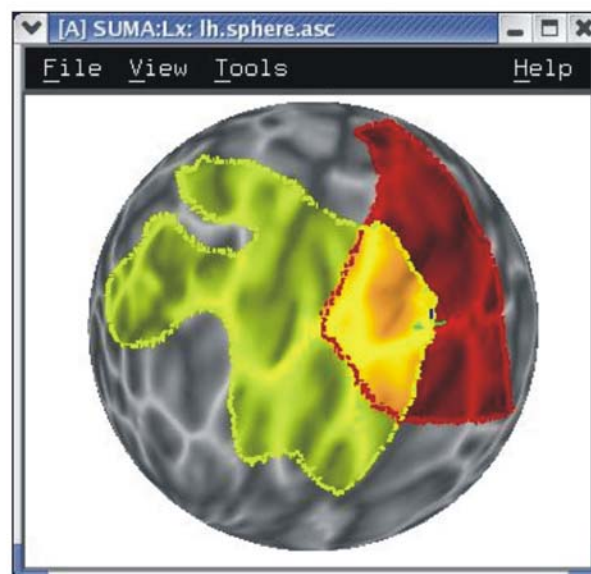
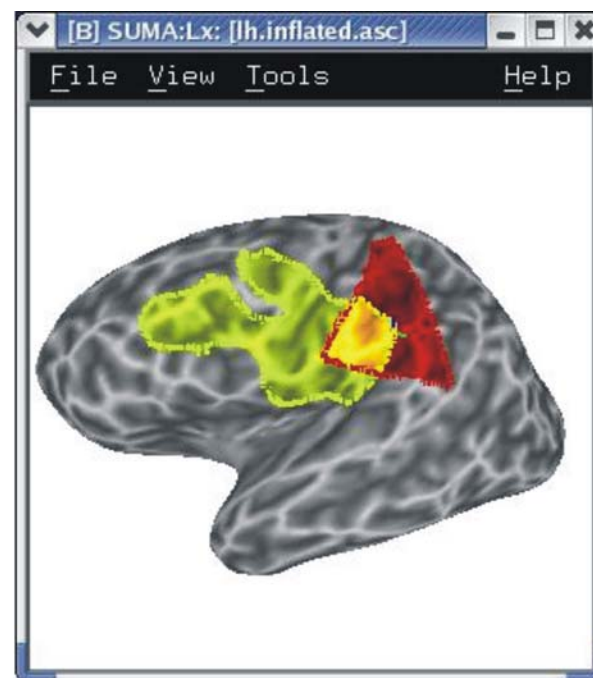
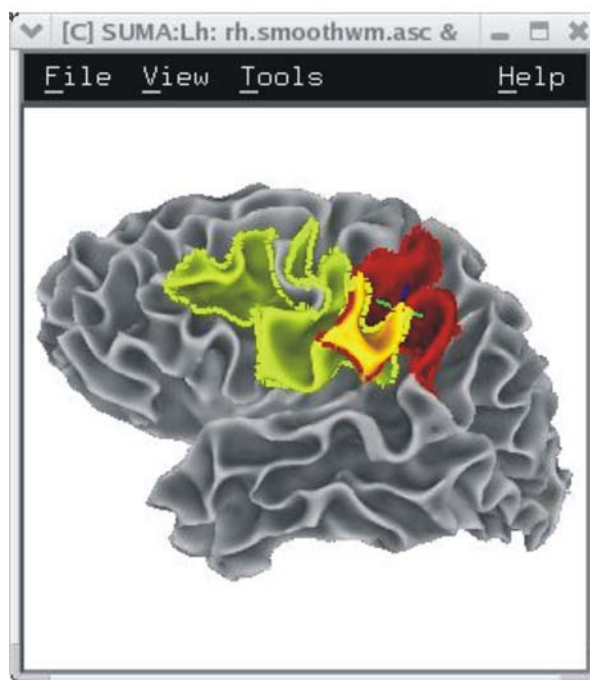
SUMA tour: Multiple Linked Viewers

- Up to 6 linked surface viewers open simultaneously



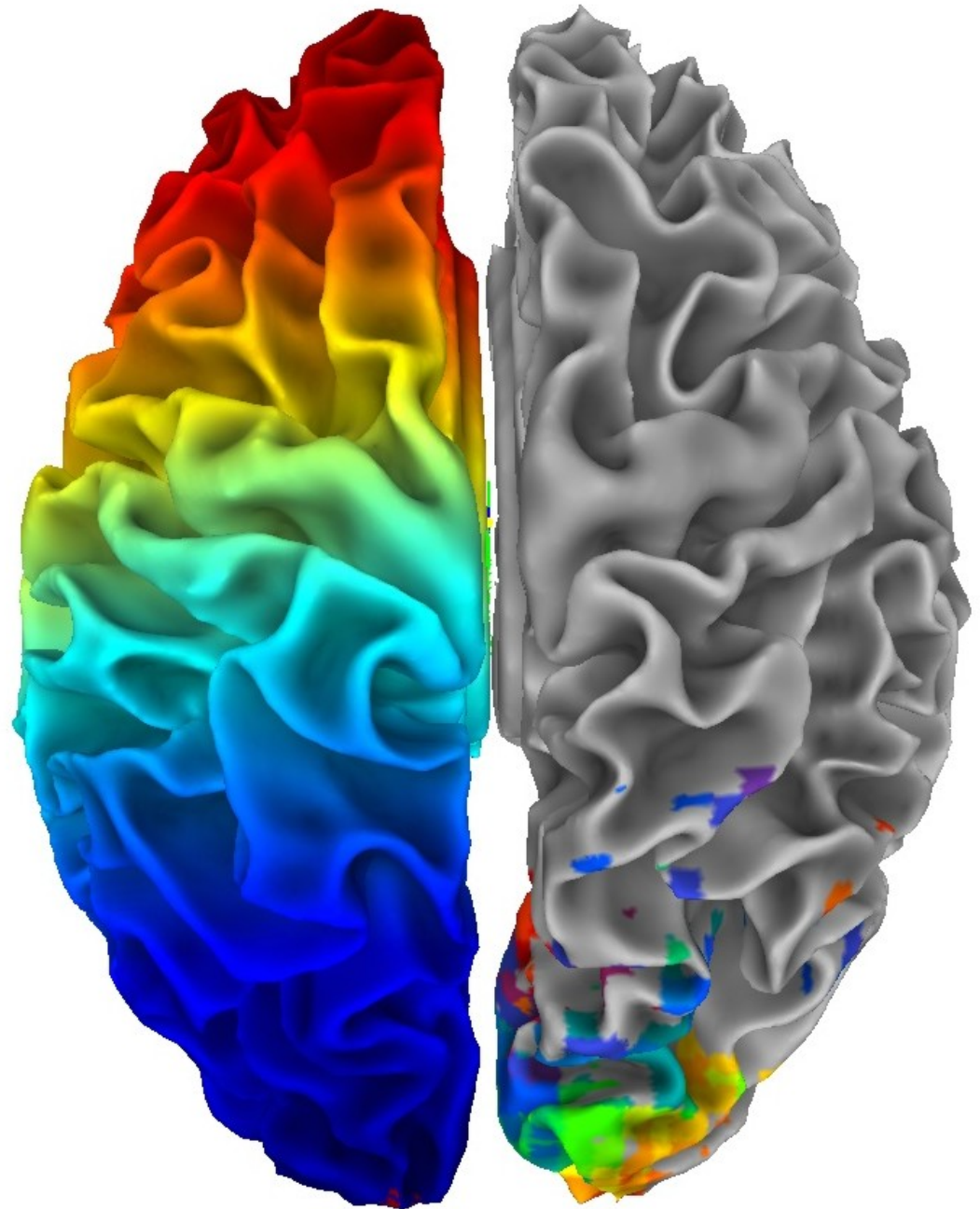
SUMA tour: ROI drawing

- Free hand ROI drawing in any viewer
- Multi-level Do/UnDo
- ROI save/read



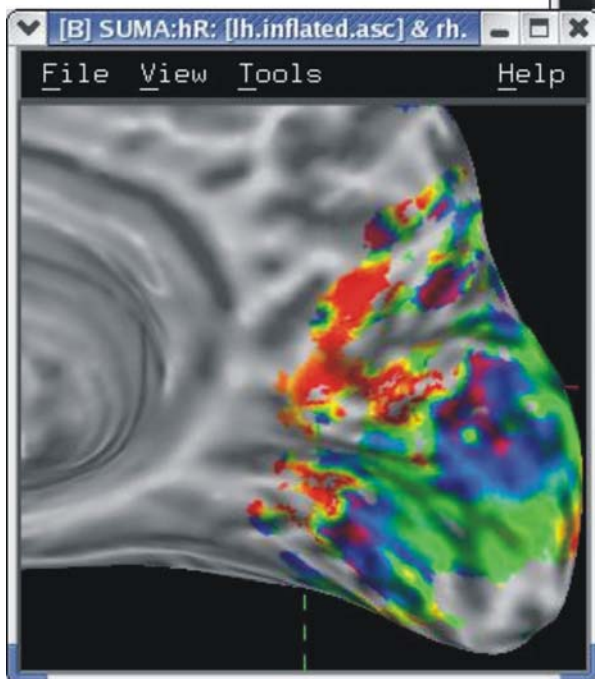
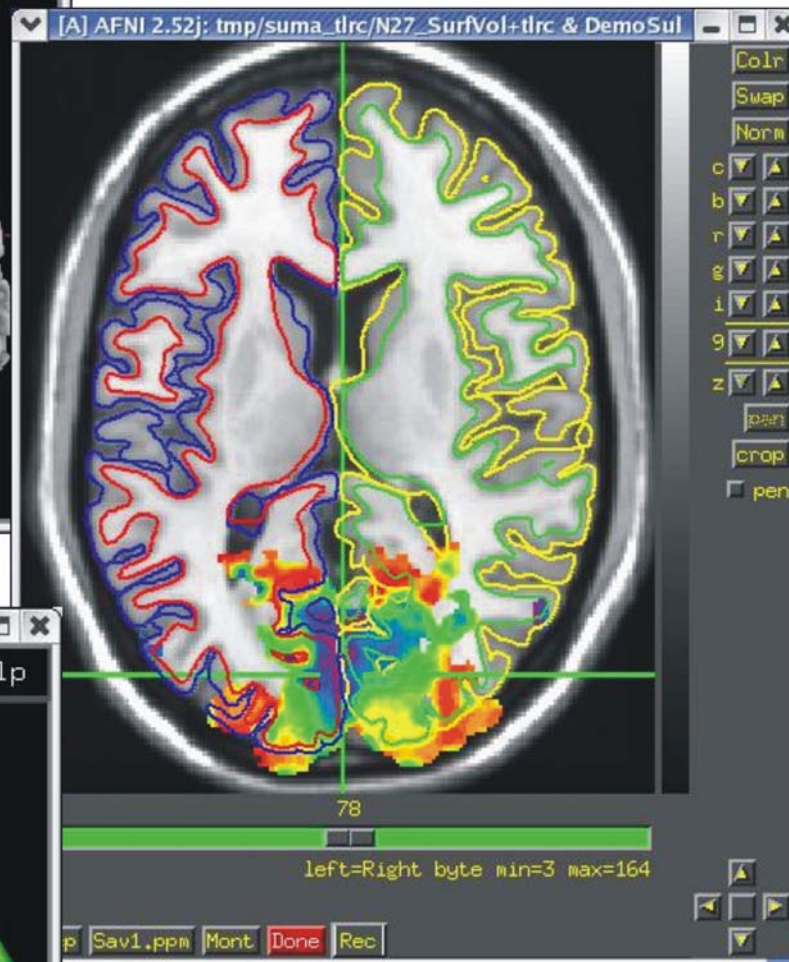
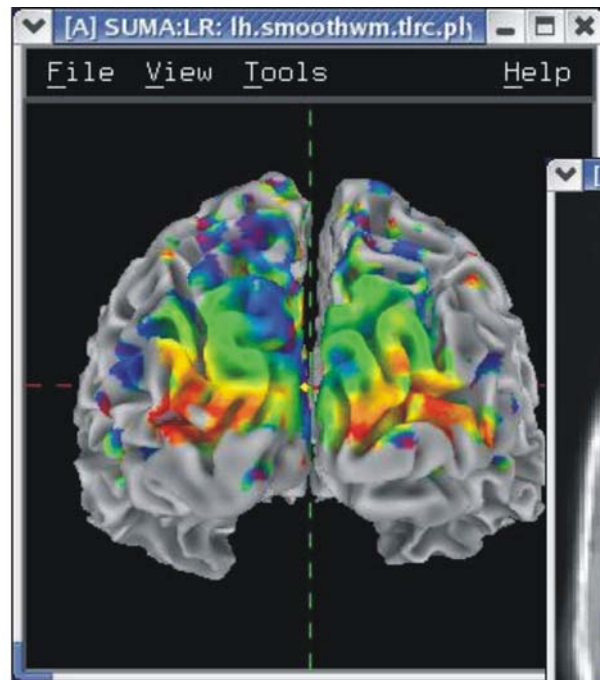
SUMA tour:

- Simultaneous left / right hemisphere display



SUMA tour: Talairach surface

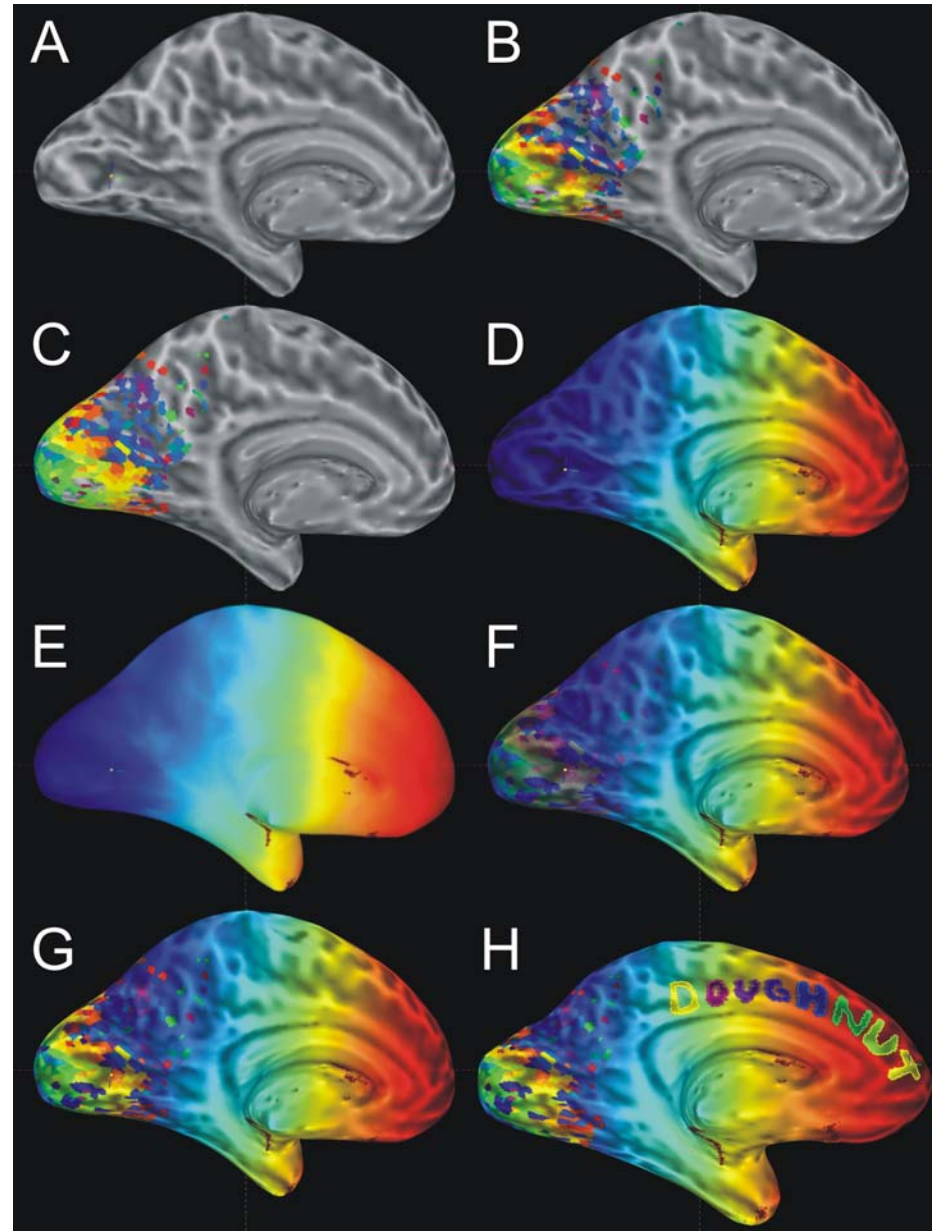
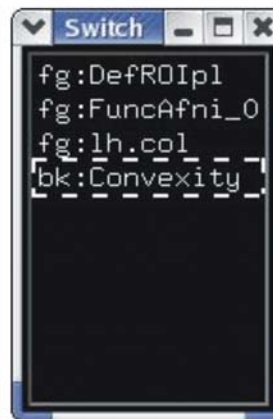
Surface models in
Talairach space of
N27 data set



courtesy of Brenna Argall and Patricia Christidis

SUMA tour:

Interactive color mapping of surface datasets
and control of color plane order and opacity



SUMA tour:

- Recording in continuous or single frame mode

