

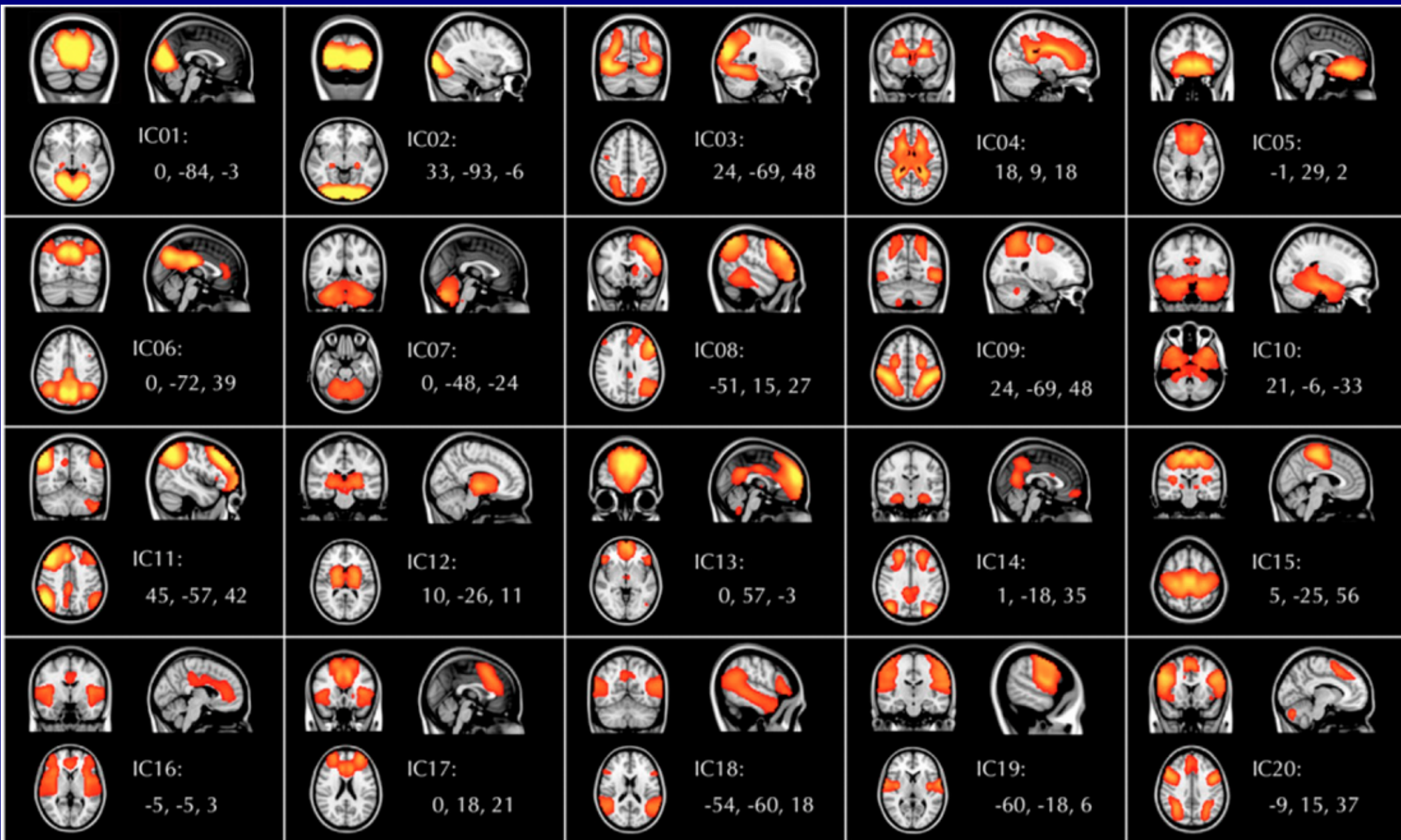
Introduction to  
AFNI+SUMA+FATCAT,  
Part I

DTI+tractography for data exploration and  
complementing functional connectivity

# Outline

- + Why Function+Structure
- + DWI and DTI (→ local structures)
  - Brief diffusion imaging basics and parameters
  - Role of noise → DTI parameter uncertainty
- + Using tractography (→ estimate extended structures)
  - goals of tracking.
  - algorithms/properties
  - final thoughts on interpretation

# FMRI: GM Networks



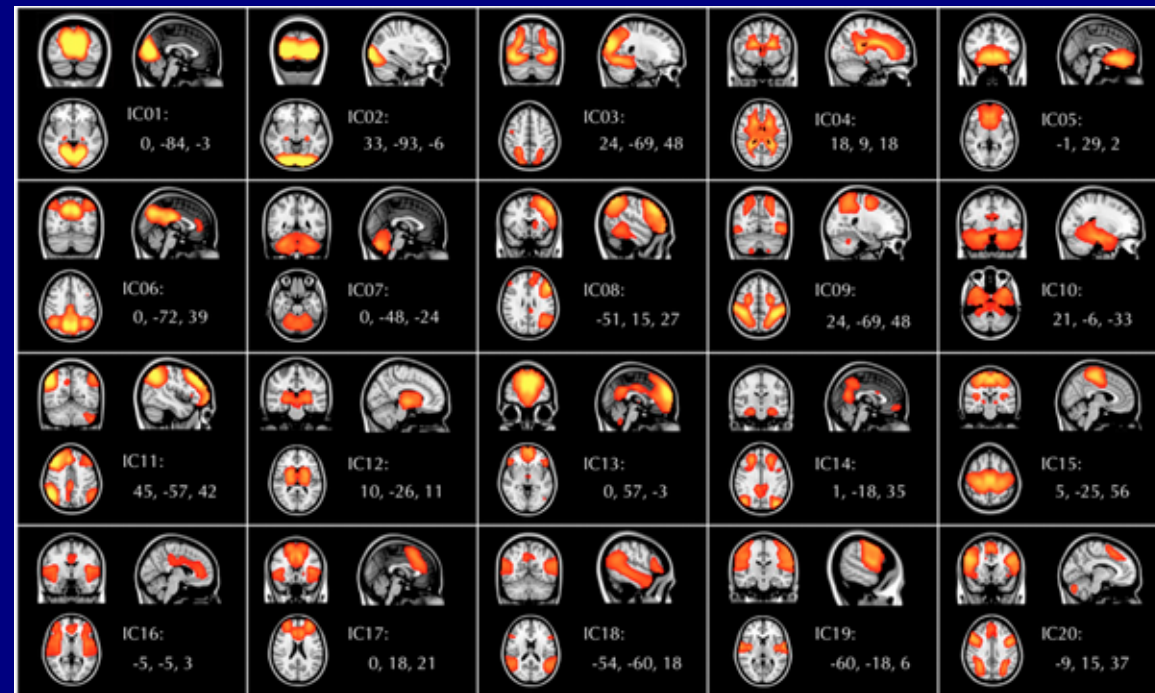
(Biswal et al., 2010 PNAS)

# FMRI: GM Networks

Functional connectivity networks of distinct GM regions, from BOLD time series during task or rest/no task.

+ Quantify GM properties: ALFF, fALFF, RSFA,  $\sigma$ , ReHo, GMV, etc.

+ Quantify network props: seedbased correlation, ICA, graph theoretical measures, etc.



# DTI: WM structure

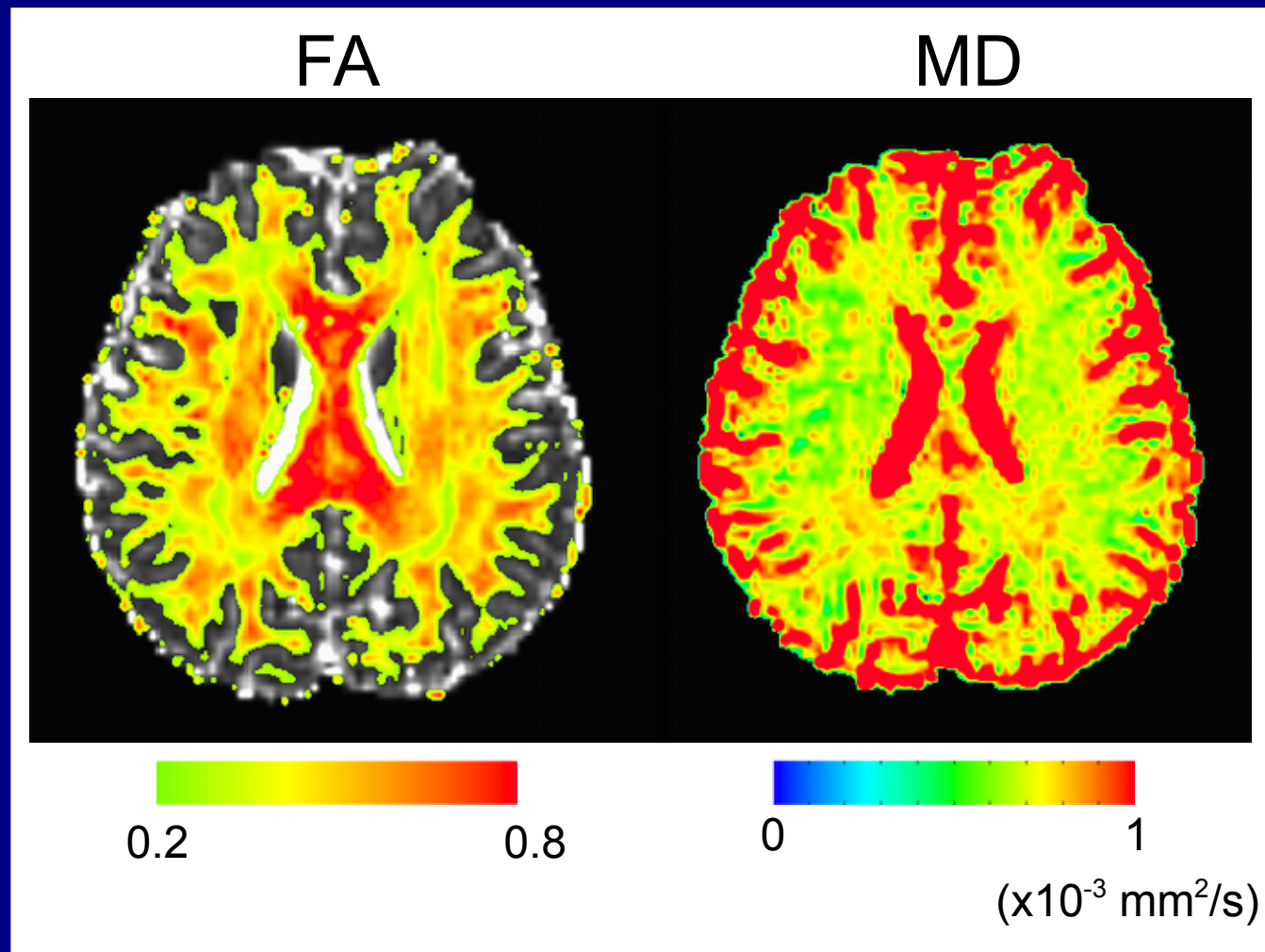
DTI-based parameters characterize some local structural properties and also show the presence of spatially-extended WM structures.

Can quantify structural (esp. WM) properties using:

FA, MD, RD, L1, etc.

Can investigate (and Quantify?) network relations with:

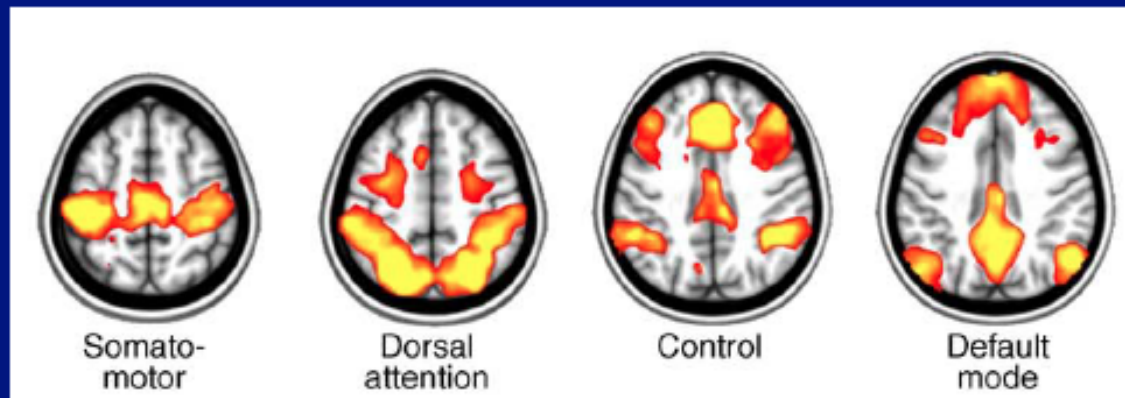
tractography



# Structure + Function

Simple example:

GM ROIs  
network:

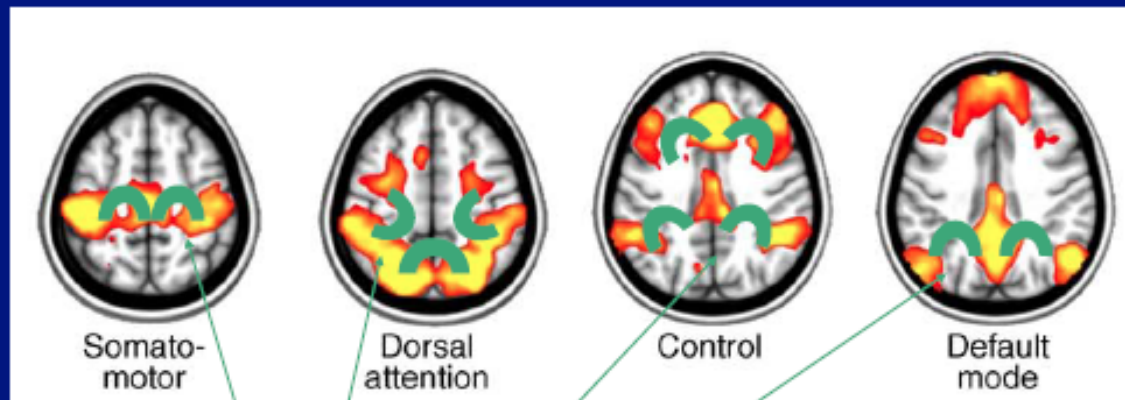


*Raichle (2010, TICS)*

# Structure + Function

Simple example:

GM ROIs  
network:



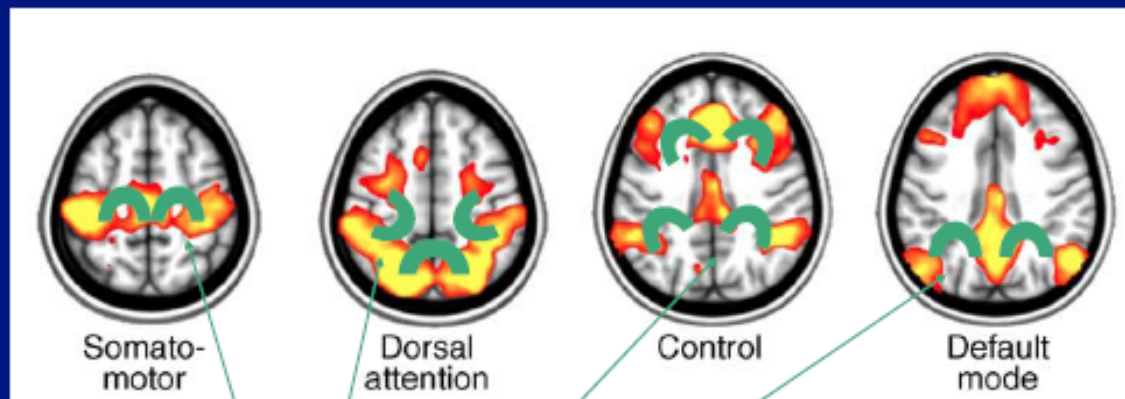
*Raichle (2010, TICS)*

Associated WM ROIs

# Structure + Function

Simple example:

GM ROIs  
network:



*Raichle (2010, TICS)*

**Associated WM ROIs**

Our goal for tractography->

*estimate likely/probable locations of WM associated with GM,  
and relate ROI quantities with functional/GM properties*



# Combining FC and SC

- + How to combine *quantitatively*?
  - FMRI has measures of functional **connectivity** and **'strength'** (e.g., correlation, network parameters)

# Combining FC and SC

- + How to combine *quantitatively*?
  - fMRI has measures of functional connectivity and 'strength' (e.g., correlation, network parameters)
  - DTI tracking between GM ROIs-- we can have 'structural connectivity' strength, e.g., in terms of # of fibers?
    - > will discuss more, but think this is *not* good road to be on

# Combining FC and SC

- + How to combine *quantitatively*?
  - fMRI has measures of functional connectivity and 'strength' (e.g., correlation, network parameters)
  - DTI tracking between GM ROIs-- we can have 'structural connectivity' strength, e.g., in terms of # of fibers?
    - > will discuss more, but think this is **not** good road to be on
    - how about:
      - find **likely areas** where WM is connecting GM regions, and **quantify properties** in those regions (FA, MD, proton density from structural images...)

# Combining FC and SC

- + How to combine *quantitatively*?
  - fMRI has measures of functional connectivity and 'strength' (e.g., correlation, network parameters)
  - DTI tracking between GM ROIs-- we can have 'structural connectivity' strength, e.g., in terms of # of fibers?
    - > will discuss more, but think this is **not** good road to be on
    - how about:
      - find likely areas where WM is connecting GM regions, and quantify properties in those regions (FA, MD, proton density from structural images...)

→ FC+SC provides sets of complementary quantities to describe a network, and can be further combined with behavioral/other measures (statistical modeling).

# Tools for combining FC and SC:

Combining functional and tractographic connectivity will require:

- + determining networks from fMRI (or other) data;
- + finding correlations and local properties of functional networks;
- + turning GM ROIs into targets for tractography;
- + doing reasonable tractography to find WM ROIs;
- + estimating stats on WM ROIs...

# Tools for combining FC and SC:

Combining functional and tractographic connectivity will require:

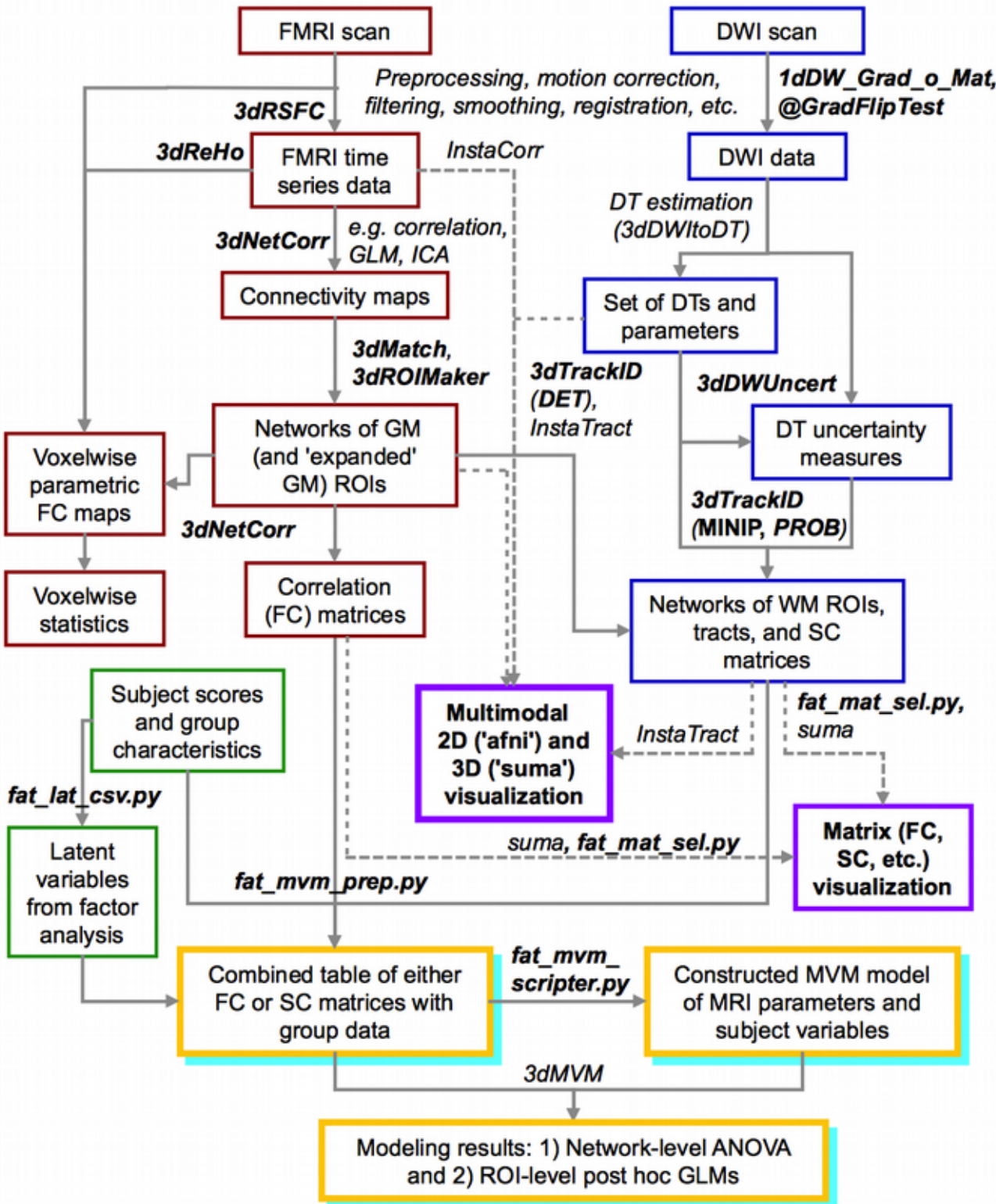
- + determining networks from fMRI (or other) data;
- + finding correlations and local properties of functional networks;
- + turning GM ROIs into targets for tractography;
- + doing reasonable tractography to find WM ROIs;
- + estimating stats on WM ROIs...

**FATCAT:** Functional And Tractographic Connectivity Analysis Toolbox (Taylor & Saad, 2013), available in AFNI with demo data+scripts.



\*picture from google search, not from/of either author

# Schematic for combining FMRI and DTI-tractography via FATCAT

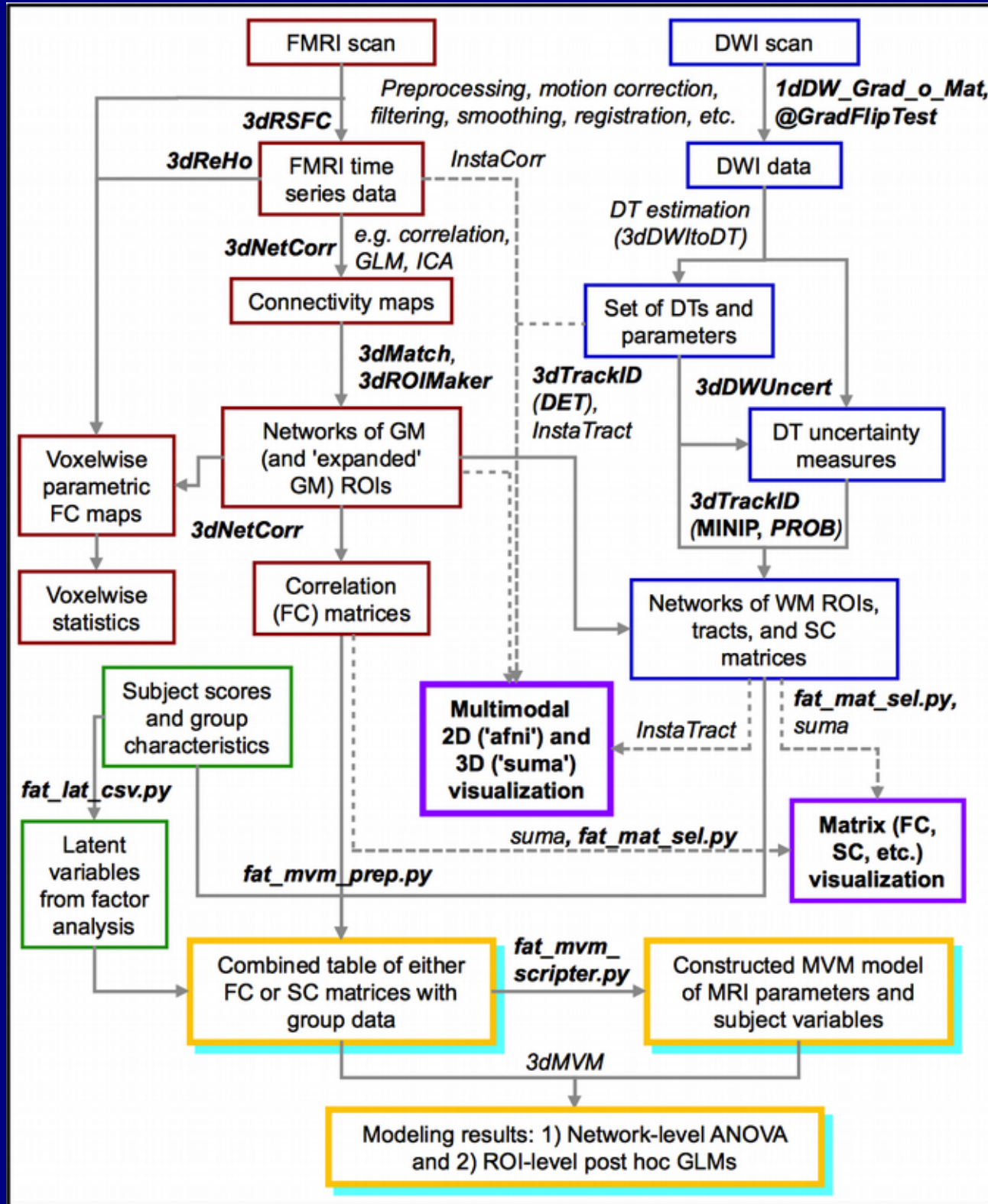


(Taylor, Chen, Cox & Saad, 2015?)

# Schematic for combining FMRI and DTI-tractography via FATCAT

## FATCAT goals:

- + Do useful tasks
- + Integrate with existing pipelines/software
- + Derive/use information from the data itself
- + Be “simple” to implement
- + Be network-oriented, when possible
- + Be efficient
- + Be flexible and able to grow



(Taylor, Chen, Cox & Saad, 2015?)



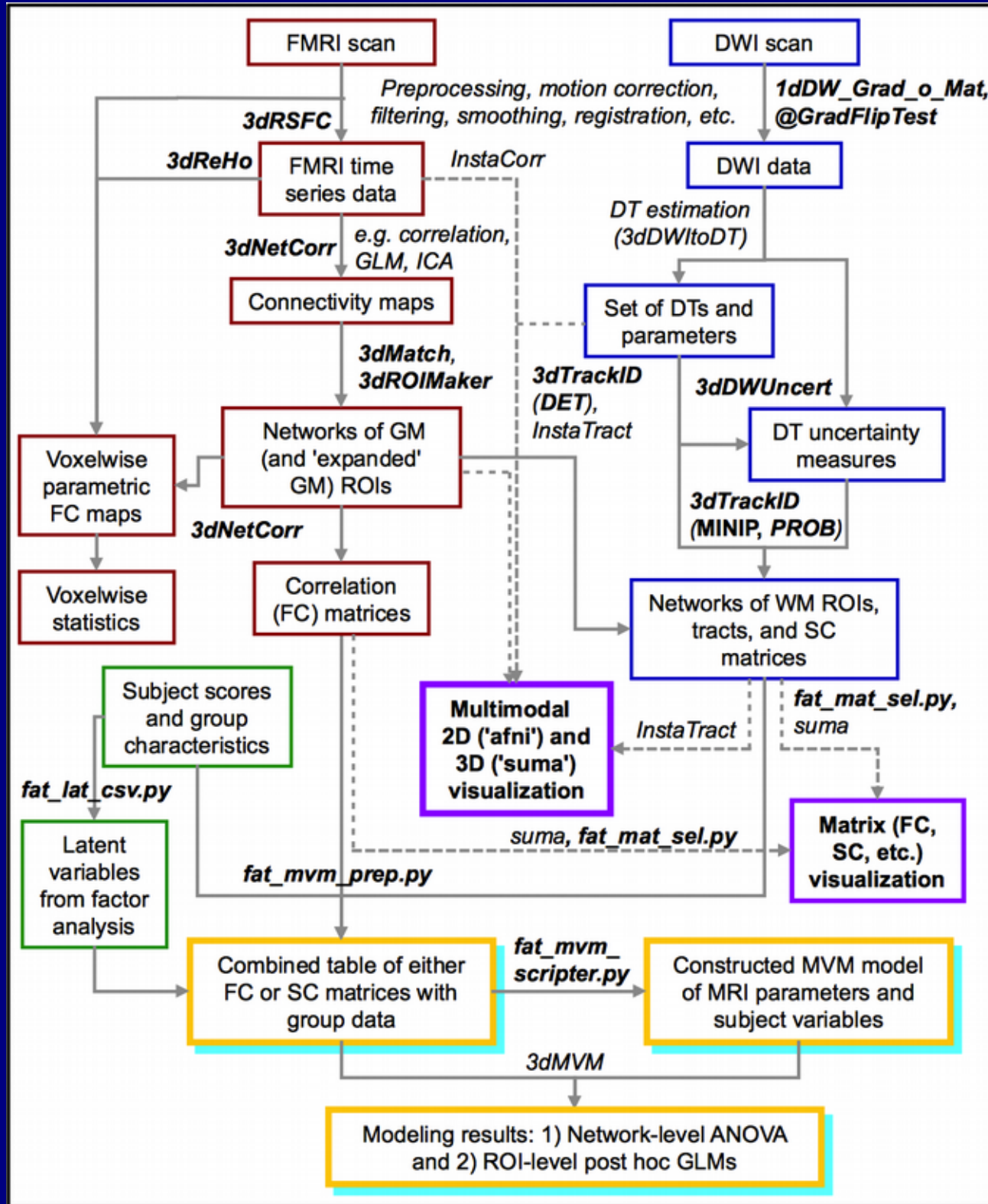
# Schematic for combining FMRI and DTI-tractography via FATCAT

## FATCAT goals:

- + Do useful tasks
- + Integrate with existing pipelines/software
- + Derive/use information from the data itself
- + Be “simple” to implement
- + Be network-oriented, when possible
- + Be efficient
- + Be flexible and able to grow

Main focus today on DTI-tractography, including making ROIs from FMRI

(Taylor, Chen, Cox & Saad, 2015?)



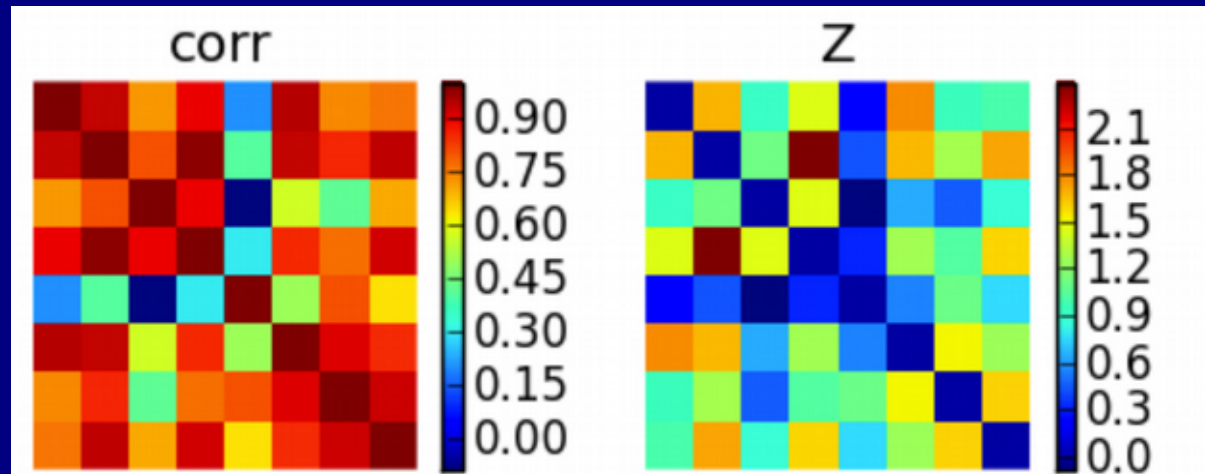
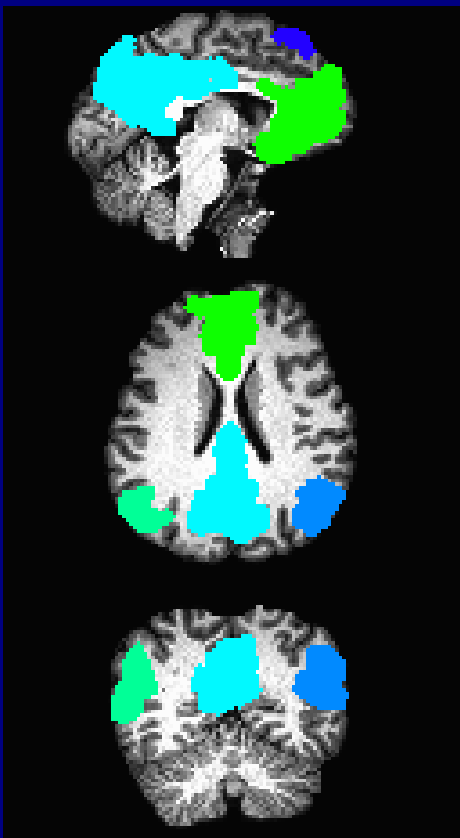
Sidenote:

***Mention of a few of the FMRI tools***

# Functional processing, 3

For {RS- | TB-}fMRI: correlation matrices

- + **3dNetCorr**: calculated post-processing, input time series data + network maps
  - can be multi-brick maps, 1 network per brick
  - calculate average time series per ROI, correlation among network ROIs
  - outputs correlation matrix/matrices, (can also do Fisher-Z transform output)

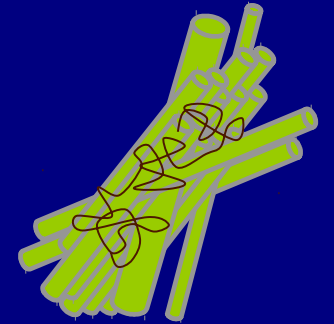


Diffusion tensor and parameters:  
*local* measure of structure

# Local Structure via Diffusion MRI

(In brief)

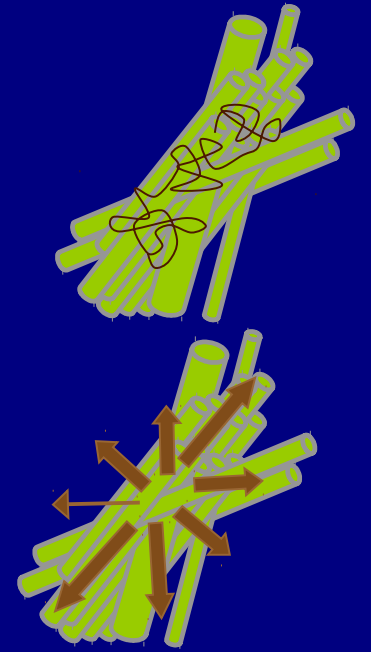
1) Random motion of molecules affected by local structures



# Local Structure via Diffusion MRI

(In brief)

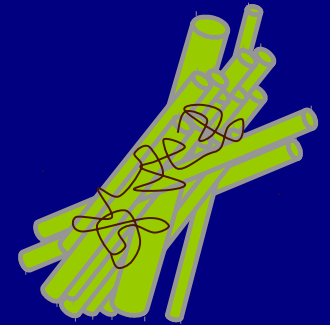
- 1) Random motion of molecules affected by local structures
- 2) Statistical motion measured using diffusion weighted MRI



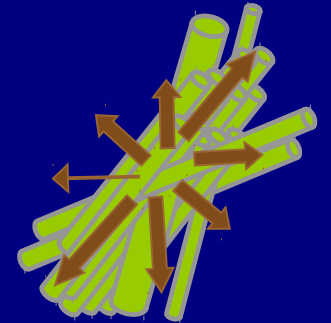
# Local Structure via Diffusion MRI

(In brief)

1) Random motion of molecules affected by local structures



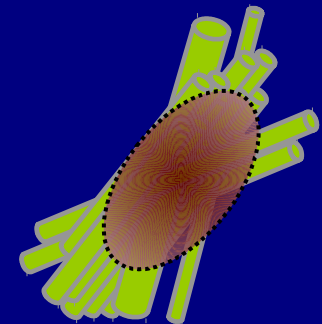
2) Statistical motion measured using diffusion weighted MRI



3) Bulk features of local structure approximated with various reconstruction models, mainly grouped by number of major structure directions/voxel:

+ one direction:

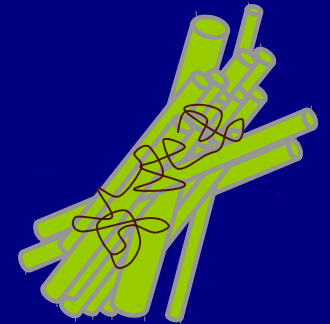
DTI (Diffusion Tensor Imaging)



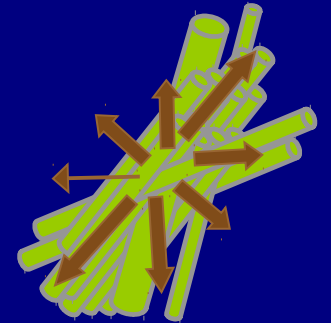
# Local Structure via Diffusion MRI

(In brief)

1) Random motion of molecules affected by local structures



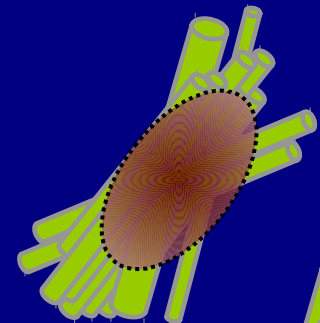
2) Statistical motion measured using diffusion weighted MRI



3) Bulk features of local structure approximated with various reconstruction models, mainly grouped by number of major structure directions/voxel:

+ one direction:

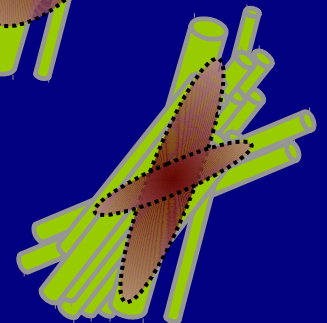
DTI (Diffusion Tensor Imaging)



+  $\geq 1$  direction:

HARDI (High Angular Resolution Diffusion Imaging)

Qball, DSI, ODFs, ball-and-stick, multi-tensor, CSD, ...





# Diffusion in MRI

Mathematical properties  
of the matrix/tensor:

$$\mathbf{D} = \begin{pmatrix} D_{11} & D_{12} & D_{13} \\ D_{21} & D_{22} & D_{23} \\ D_{31} & D_{32} & D_{33} \end{pmatrix}$$

Having: 3 eigenvectors:  $\mathbf{e}_i$   
3 eigenvalues:  $\lambda_i$

- Real-valued
- Positive definite ( $\mathbf{r}^T \mathbf{D} \mathbf{r} > 0$ )  
 $\mathbf{D} \mathbf{e}_i = \lambda_i \mathbf{e}_i, \quad \lambda_i > 0$
- Symmetric ( $D_{12} = D_{21}$ , etc),  
6 independent values

# Diffusion in MRI

Mathematical properties  
of the matrix/tensor:

$$\mathbf{D} = \begin{pmatrix} D_{11} & D_{12} & D_{13} \\ D_{21} & D_{22} & D_{23} \\ D_{31} & D_{32} & D_{33} \end{pmatrix}$$



Geometrically, this describes  
an ellipsoid surface:

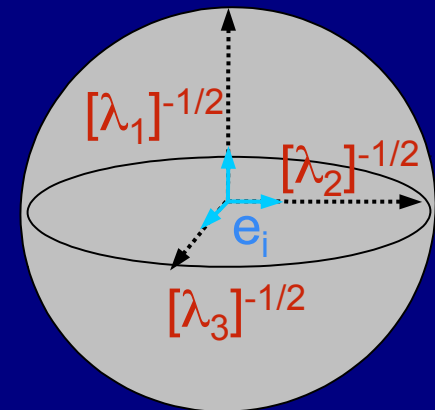
$$C = D_{11}x^2 + D_{22}y^2 + D_{33}z^2 + 2(D_{12}xy + D_{13}xz + D_{23}yz)$$

Having: 3 eigenvectors:  $\mathbf{e}_i$   
3 eigenvalues:  $\lambda_i$

- Real-valued
- Positive definite ( $\mathbf{r}^T \mathbf{D} \mathbf{r} > 0$ )  
 $\mathbf{D} \mathbf{e}_i = \lambda_i \mathbf{e}_i, \quad \lambda_i > 0$
- Symmetric ( $D_{12} = D_{21}$ , etc),  
6 independent values

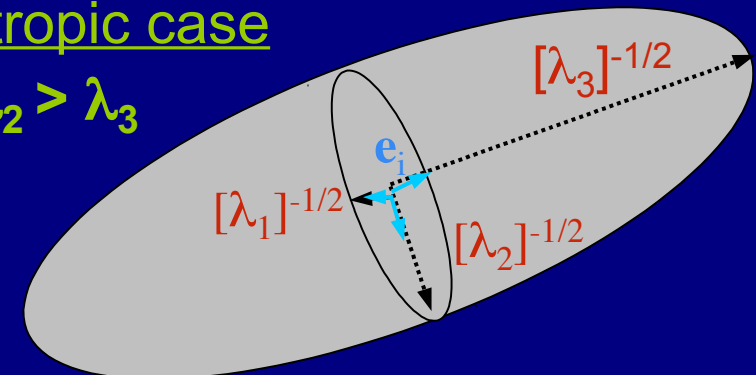
isotropic case

$$\lambda_1 = \lambda_2 = \lambda_3$$



anisotropic case

$$\lambda_1 > \lambda_2 > \lambda_3$$



# DTI: ellipsoids

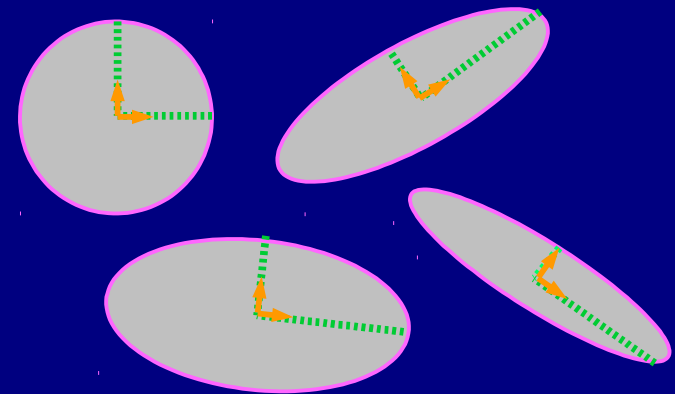
Important mathematical properties of the diffusion tensor:

+ Help to picture diffusion model:

tensor  $\mathbf{D}$   $\rightarrow$  **ellipsoid surface**

eigenvectors  $\rightarrow$  orientation in space

eigenvalues  $\rightarrow$  'pointiness' + 'size'



# DTI: ellipsoids

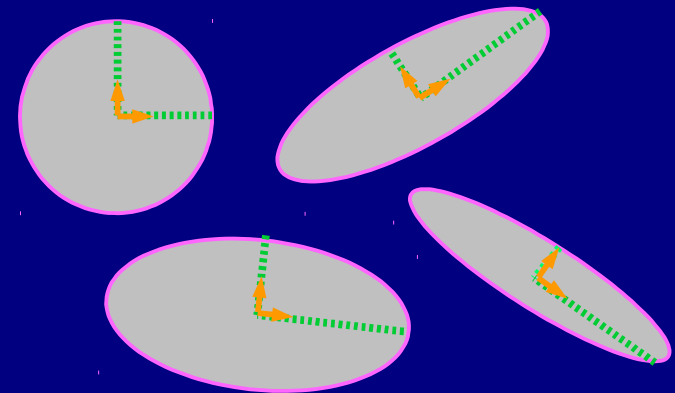
Important mathematical properties of the diffusion tensor:

+ Help to picture diffusion model:

tensor  $\mathbf{D}$   $\rightarrow$  ellipsoid surface

eigenvectors  $\rightarrow$  orientation in space

eigenvalues  $\rightarrow$  'pointiness' + 'size'



+ Determine the minimum number of

DWIs measures needed (6 + baseline)

$$\begin{pmatrix} D_{11} & D_{12} & D_{13} \\ D_{21} & D_{22} & D_{23} \\ D_{31} & D_{32} & D_{33} \end{pmatrix}$$

# DTI: ellipsoids

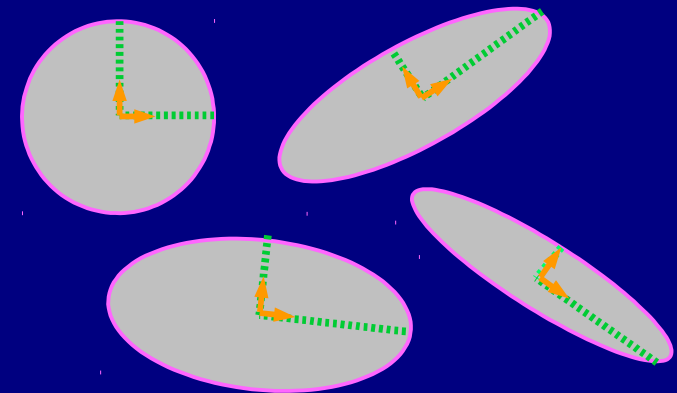
Important mathematical properties of the diffusion tensor:

+ Help to picture diffusion model:

tensor  $\mathbf{D}$   $\rightarrow$  **ellipsoid surface**

**eigenvectors**  $\rightarrow$  **orientation in space**

**eigenvalues**  $\rightarrow$  'pointiness' + 'size'



+ Determine the minimum number of

DWIs measures needed (6 + baseline)

$$\begin{pmatrix} D_{11} & D_{12} & D_{13} \\ D_{21} & D_{22} & D_{23} \\ D_{31} & D_{32} & D_{33} \end{pmatrix}$$

+ Determine much of the processing and noise minimization steps

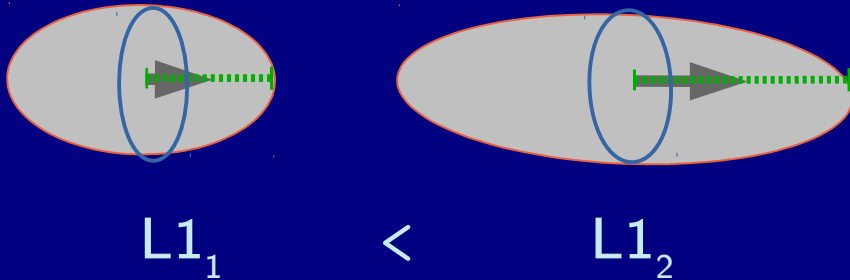
# “Big 5” DTI ellipsoid parameters

Main quantities of diffusion (motion) surface

---

first eigenvalue,  $L1$

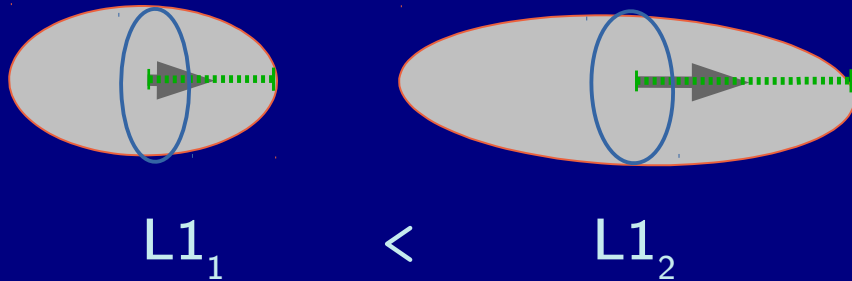
( $\equiv \lambda_1$ , parallel/axial diffusivity,  $AD$ )



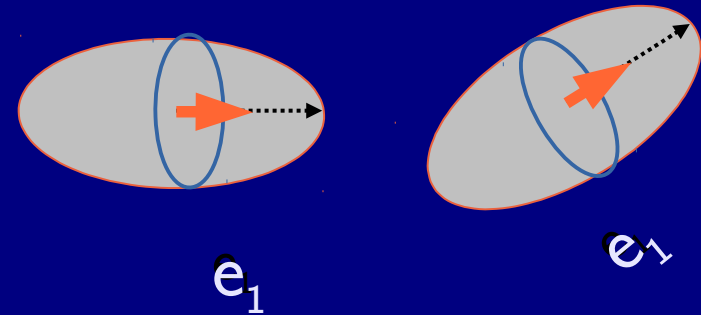
# “Big 5” DTI ellipsoid parameters

Main quantities of diffusion (motion) surface

first eigenvalue,  $L1$   
( $\equiv \lambda_1$ , parallel/axial diffusivity,  $AD$ )



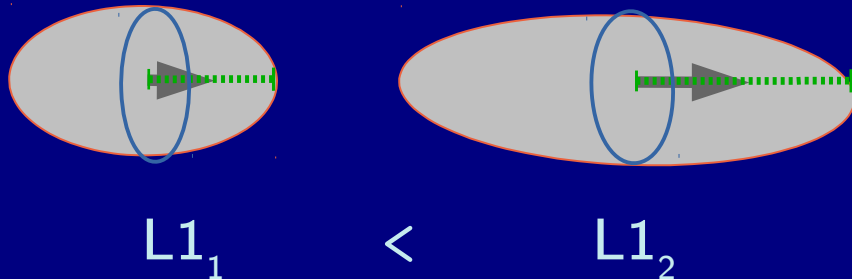
first eigenvector,  $e_1$   
(DT orientation in space)



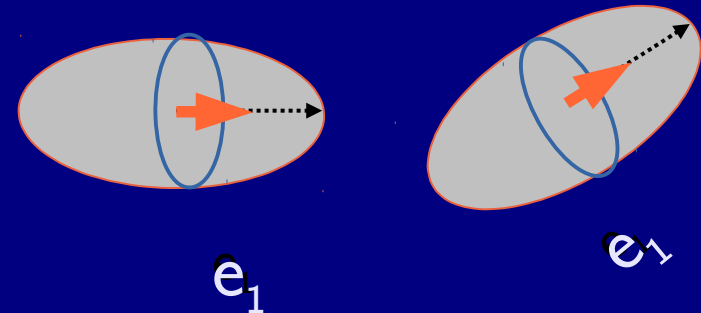
# “Big 5” DTI ellipsoid parameters

Main quantities of diffusion (motion) surface

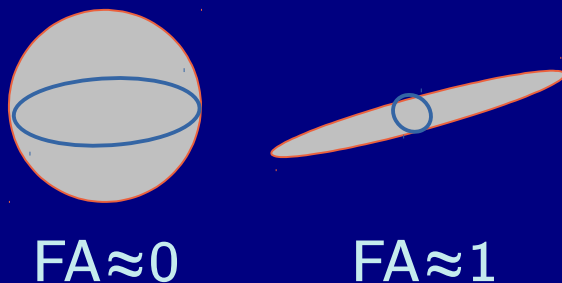
first eigenvalue,  $L1$   
( $\equiv \lambda_1$ , parallel/axial diffusivity,  $AD$ )



first eigenvector,  $e_1$   
(DT orientation in space)



Fractional anisotropy,  $FA$   
(stdev of eigenvalues)

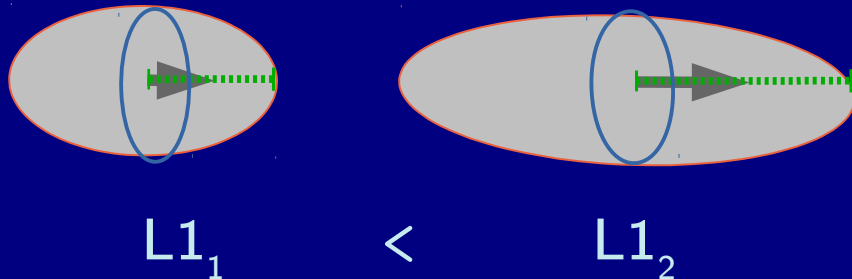




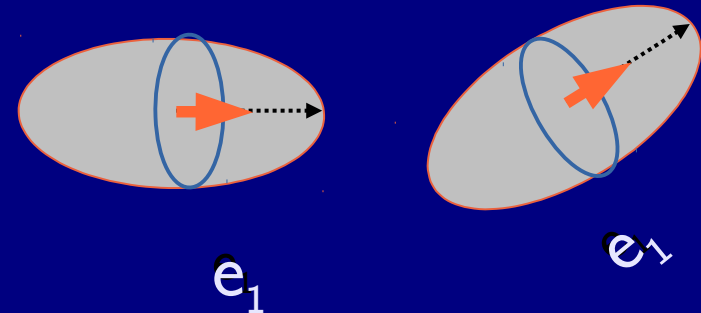
# “Big 5” DTI ellipsoid parameters

Main quantities of diffusion (motion) surface

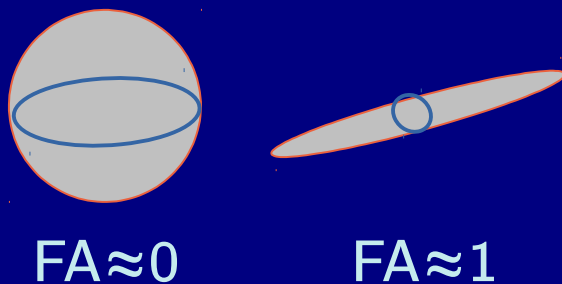
first eigenvalue,  $L1$   
( $\equiv \lambda_1$ , parallel/axial diffusivity,  $AD$ )



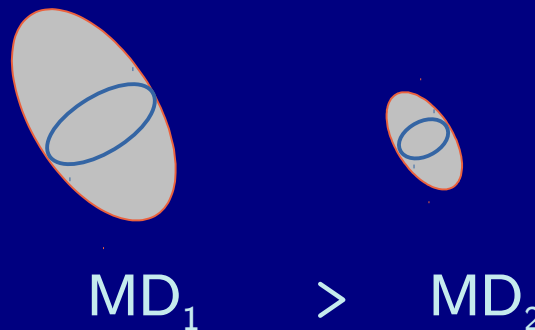
first eigenvector,  $e_1$   
(DT orientation in space)



Fractional anisotropy,  $FA$   
(stdev of eigenvalues)



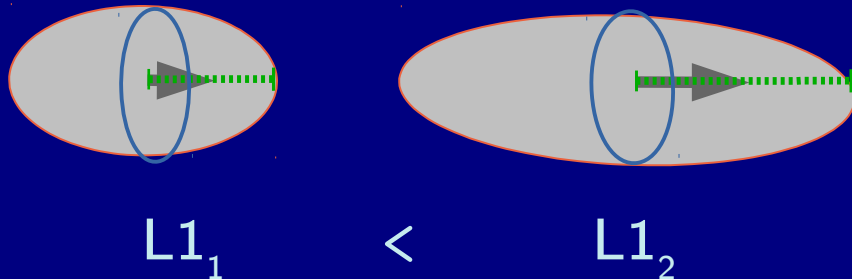
Mean diffusivity,  $MD$   
(mean of eigenvalues)



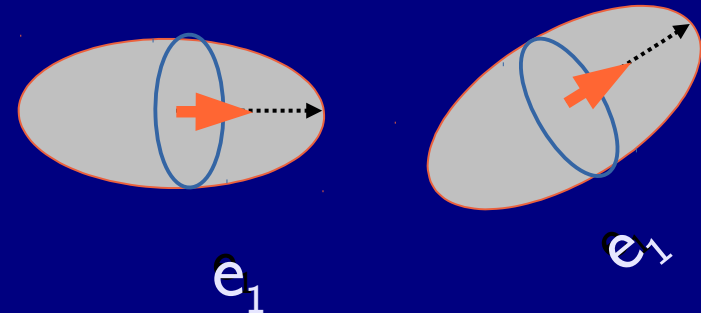
# “Big 5” DTI ellipsoid parameters

Main quantities of diffusion (motion) surface

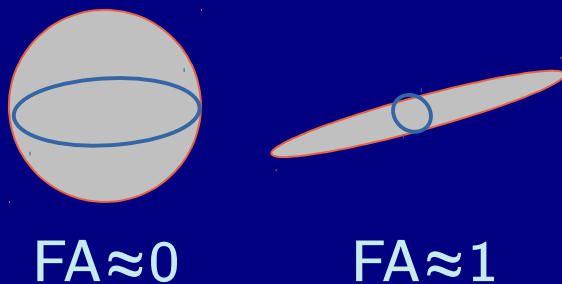
first eigenvalue,  $L1$   
( $\equiv \lambda_1$ , parallel/axial diffusivity,  $AD$ )



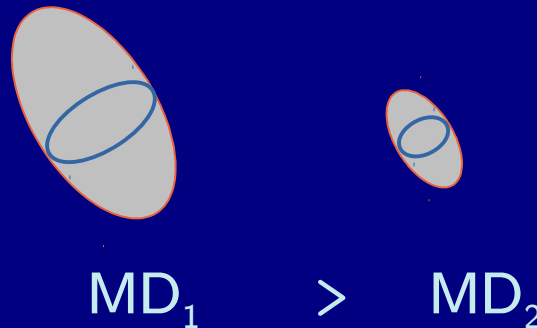
first eigenvector,  $e_1$   
(DT orientation in space)



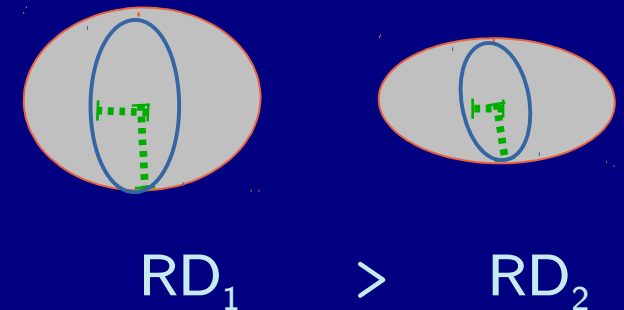
Fractional anisotropy,  $FA$   
(stdev of eigenvalues)



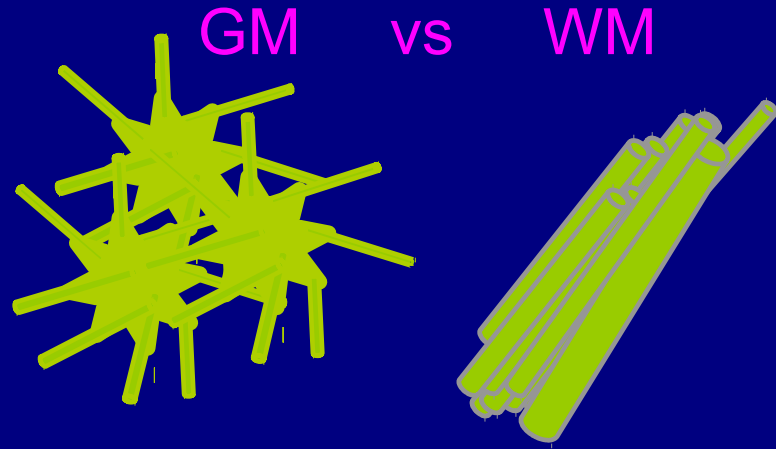
Mean diffusivity,  $MD$   
(mean of eigenvalues)



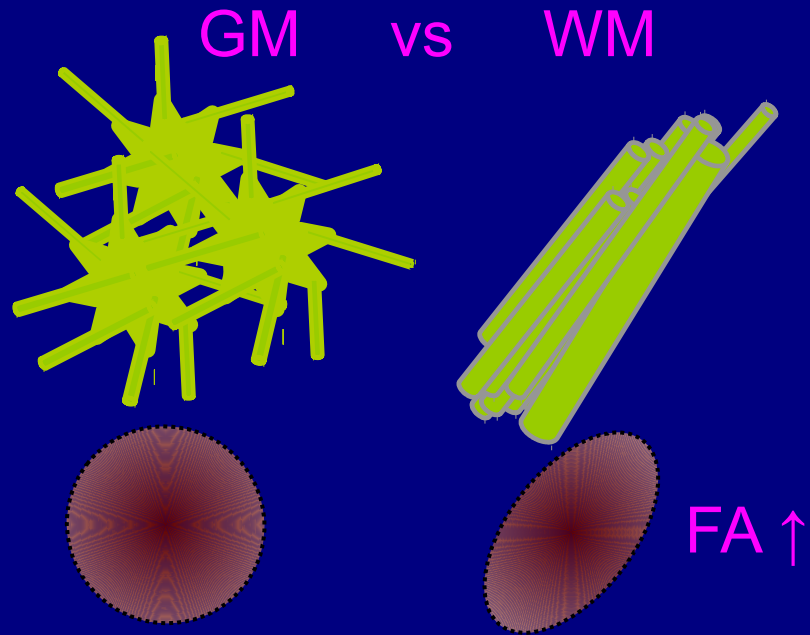
Radial diffusivity,  $RD$   
( $\equiv (\lambda_2 + \lambda_3)/2$ )



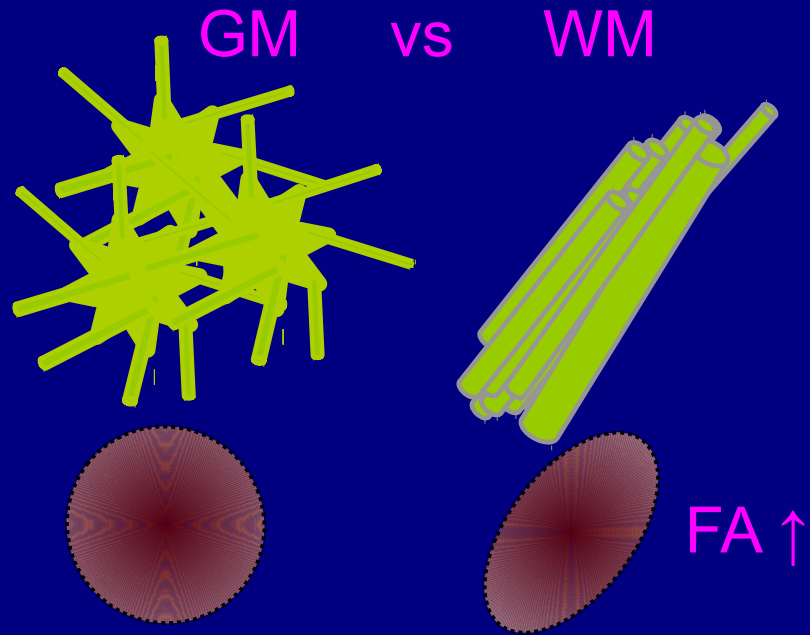
# Cartoon examples: white matter $\leftrightarrow$ FA



# Cartoon examples: white matter $\leftrightarrow$ FA

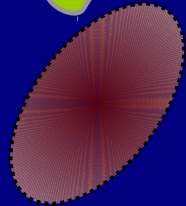
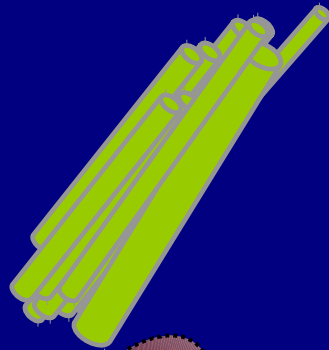
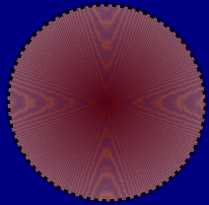
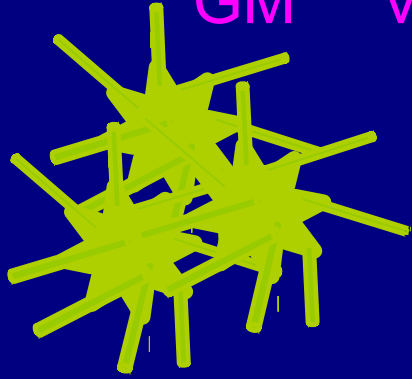


# Cartoon examples: white matter $\leftrightarrow$ FA



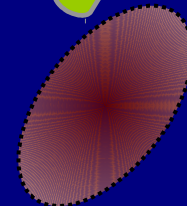
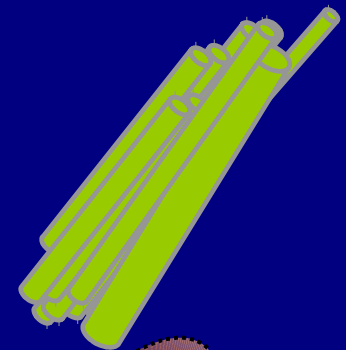
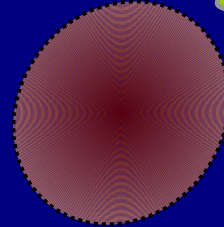
# Cartoon examples: white matter $\leftrightarrow$ FA

GM vs WM



FA  $\uparrow$

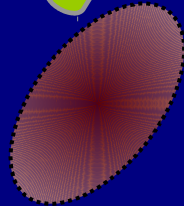
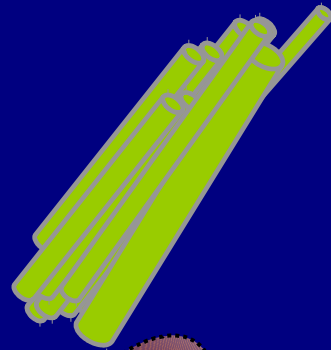
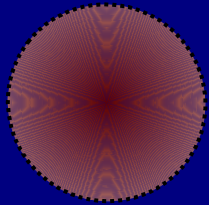
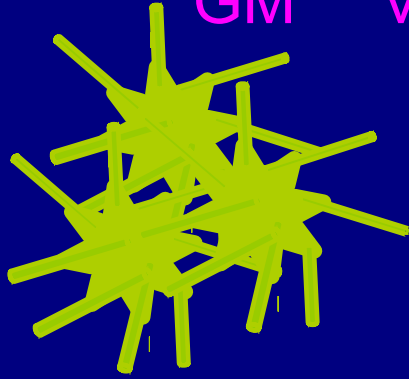
WM bundle organization



FA  $\uparrow$

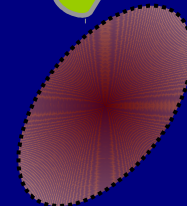
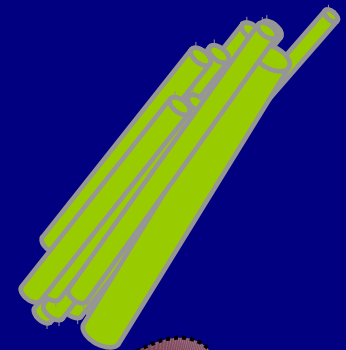
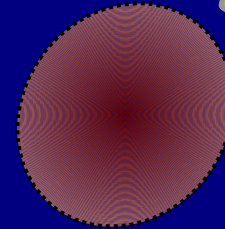
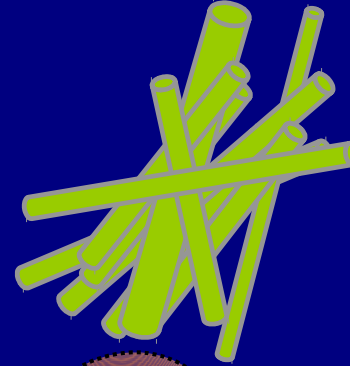
# Cartoon examples: white matter $\leftrightarrow$ FA

GM vs WM



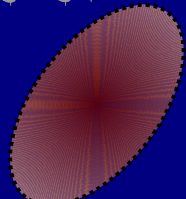
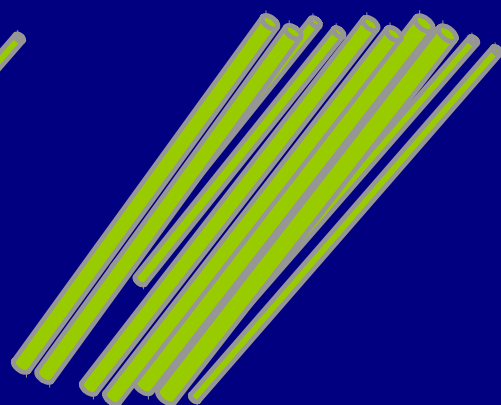
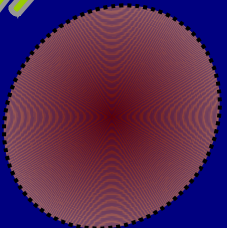
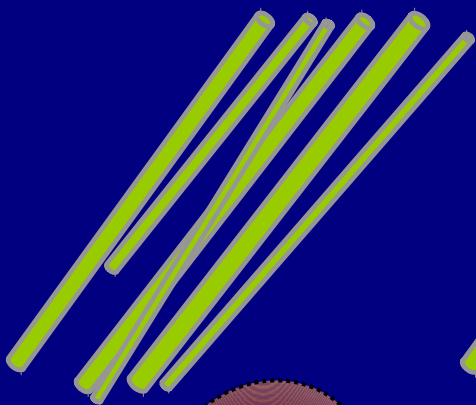
FA  $\uparrow$

WM bundle organization



FA  $\uparrow$

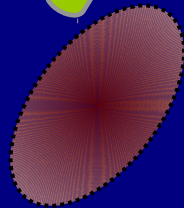
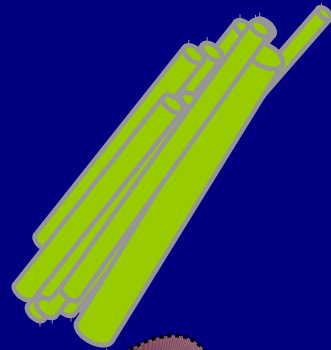
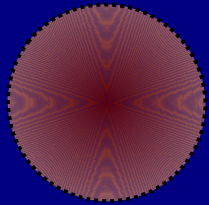
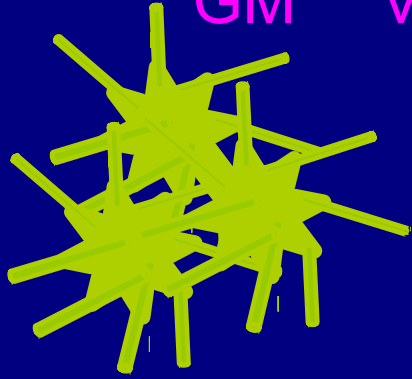
WM bundle density



FA  $\uparrow$

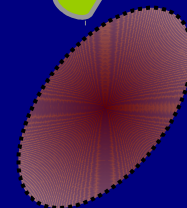
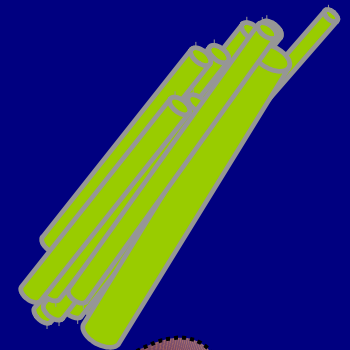
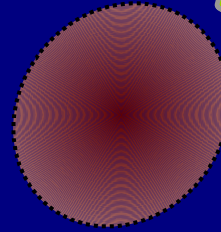
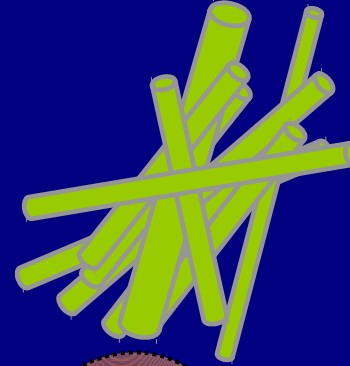
# Cartoon examples: white matter $\leftrightarrow$ FA

GM vs WM



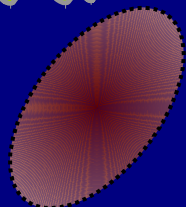
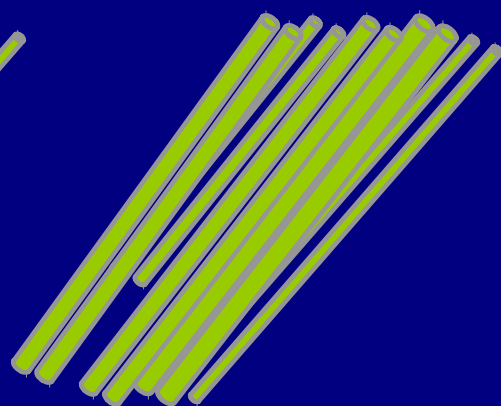
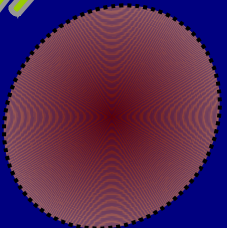
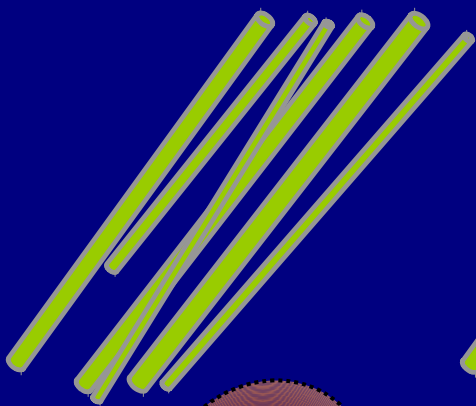
FA  $\uparrow$

WM bundle organization



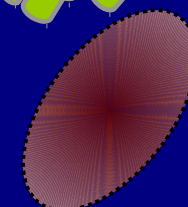
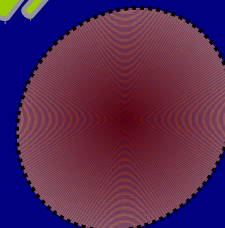
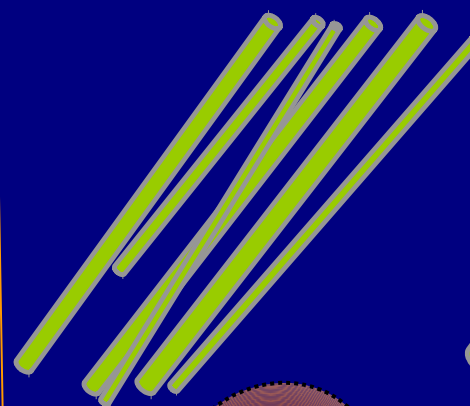
FA  $\uparrow$

WM bundle density



FA  $\uparrow$

WM maturation (myelination)



FA  $\uparrow$



# Interpreting DTI parameters

## General literature:

**FA**: measure of fiber bundle coherence and myelination

- in adults,  $FA > 0.2$  is proxy for WM

**MD, L1, RD**: local density of structure

**$e_1$** : orientation of major bundles

# Interpreting DTI parameters

## General literature:

**FA**: measure of fiber bundle coherence and myelination

- in adults,  $FA > 0.2$  is proxy for WM

**MD, L1, RD**: local density of structure

**$e_1$** : orientation of major bundles

## Cautionary notes:

- Degeneracies of structural interpretations
- Changes in myelination may have small effects on FA
- WM bundle diameter  $\ll$  voxel size
  - don't know location/multiplicity of underlying structures
- More to diffusion than structure-- e.g., fluid properties
- Noise, distortions, etc. in measures

# Noise in DW signals

MRI signals have additive noise

$$S_i = S_0 e^{-b \mathbf{g}_i^T \mathbf{D} \mathbf{g}_i} + \varepsilon,$$

where  $\varepsilon$  is (Rician) noise.

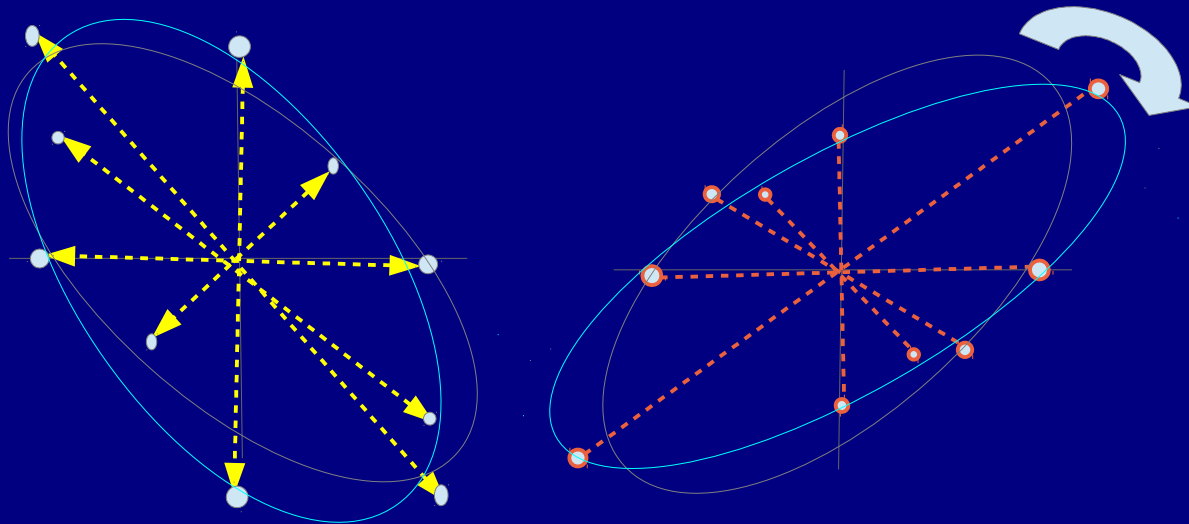
# Noise in DW signals

MRI signals have additive noise

$$S_i = S_0 e^{-b \mathbf{g}_i^T \mathbf{D} \mathbf{g}_i} + \varepsilon,$$

where  $\varepsilon$  is (Rician) noise.

→ Leads to errors in surface fit, equivalent to *rotations* and *rescalings* of ellipsoids:



'Un-noisy' vs perturbed/noisy fit

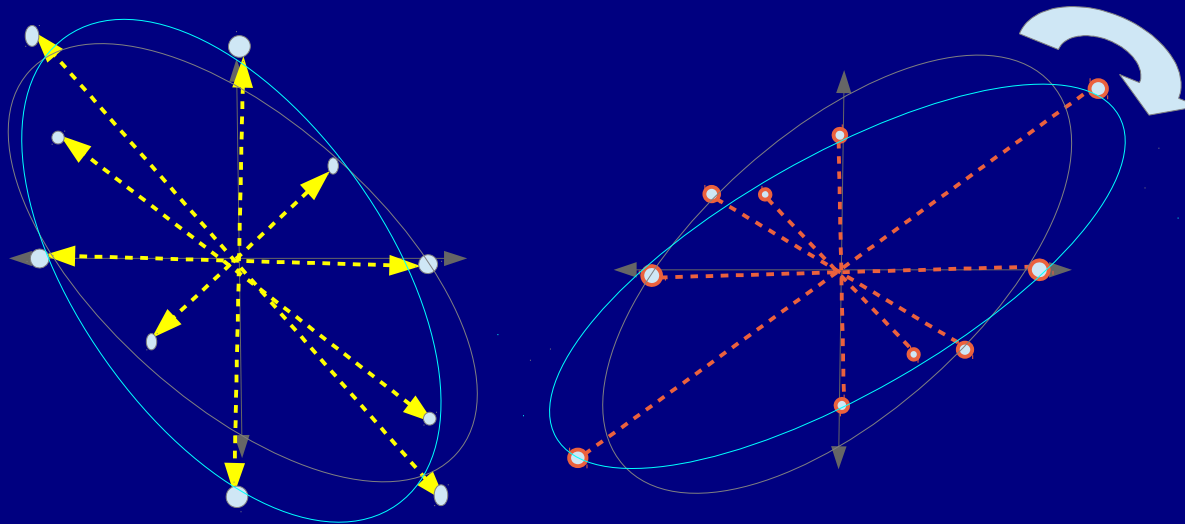
# Noise in DW signals

MRI signals have additive noise

$$S_i = S_0 e^{-b \mathbf{g}_i^T \mathbf{D} \mathbf{g}_i} + \varepsilon,$$

where  $\varepsilon$  is (Rician) noise.

→ Leads to errors in surface fit, equivalent to *rotations* and *rescalings* of ellipsoids:



Leads to standard:  
+ 30 DWs (~12 clinical)  
+ repetitions of  $b=0$   
+ DW  $b$  chosen by:  
 $MD * b \approx 0.84$   
+ nonlinear fitting

'Un-noisy' vs perturbed/noisy fit

Now discuss using *local* structure information  
to generate/estimate *nonlocal* structures:  
WM tractography

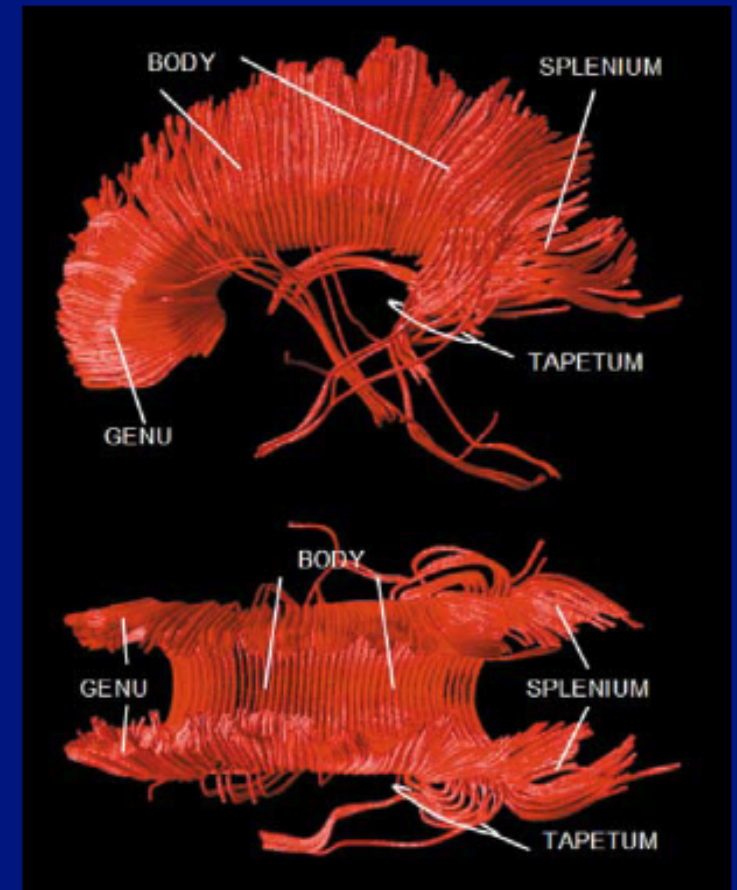
# Tractography in brief

old, invasive



stain and preserve brain, get some  
Idea of structure... non-ideal:  
brain physiology changes postmortem,  
also `mortem' aspect

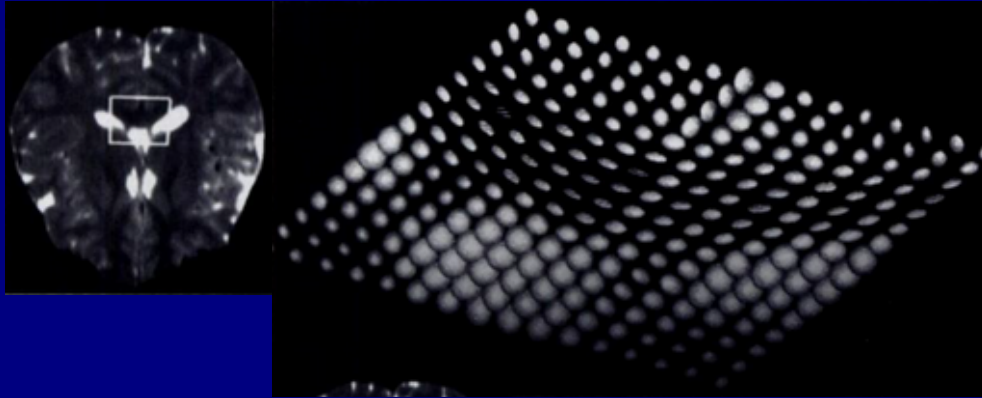
new(er), theoretical



(images from Iowa Virtual Hospital  
and Bammer et al. 2003)

# Local DTs $\rightarrow$ extended tracts

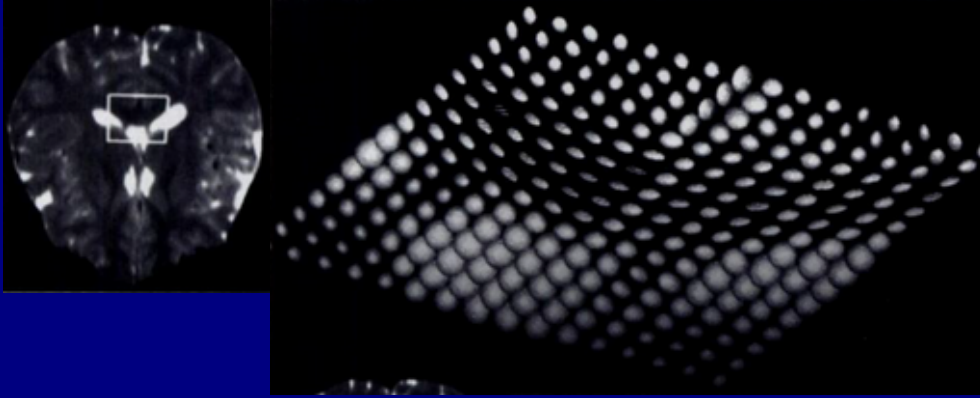
Field of local diffusion parameters





# Local DTs $\rightarrow$ extended tracts

Field of local diffusion parameters

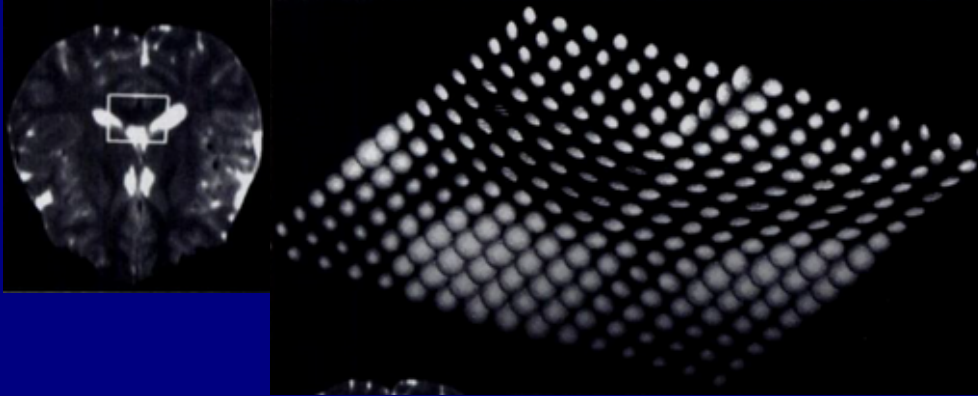


$\rightarrow$  individual ellipsoids



# Local DTs $\rightarrow$ extended tracts

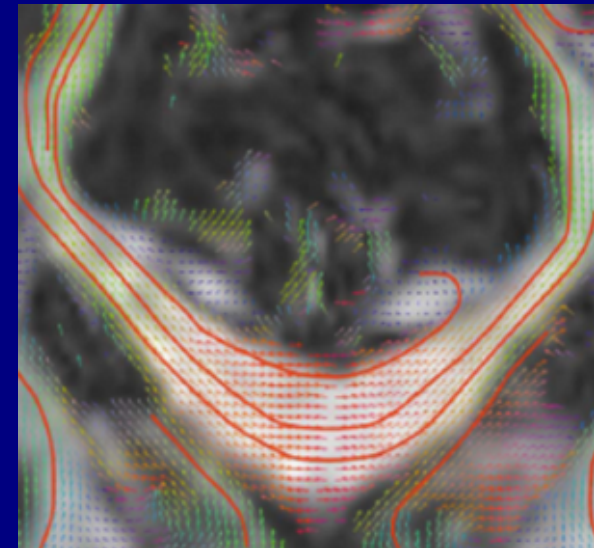
Field of local diffusion parameters



$\rightarrow$  individual ellipsoids



Connect to form extended tracts

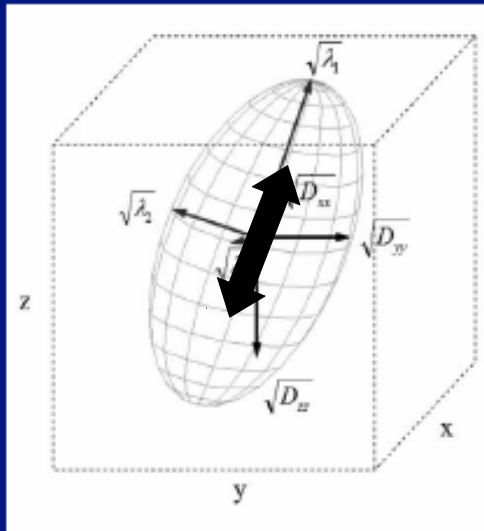


$\rightarrow$  linked structures

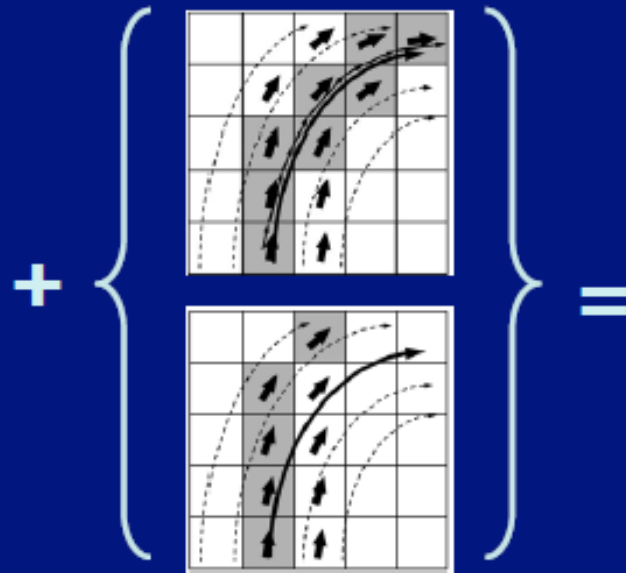


# Tractography

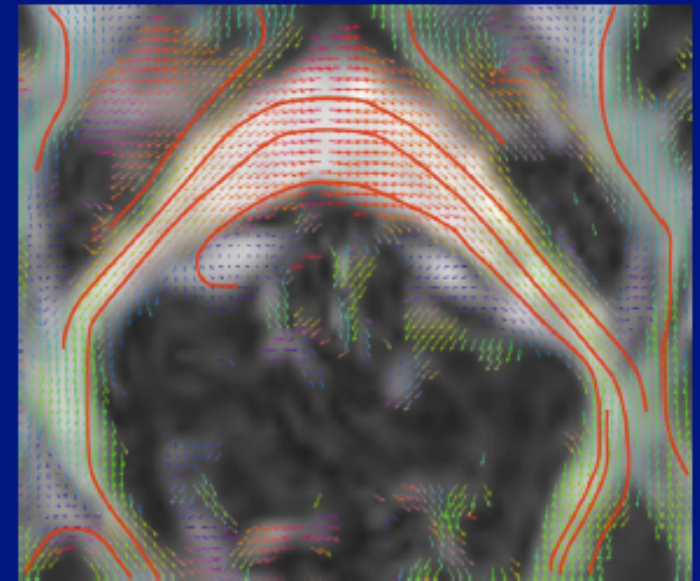
Estimate WM structure (fiber tract locations)



ellipsoid measures  
(~smoothing of  
real structures)



some kind of algorithm  
for connecting



estimate spatial  
extents of WM 'tracts'  
in vivo

# Diversity in tractography

Series of (mostly) logical, simple rules for estimating tracts

→ many methods/algorithms and kinds of parameters to choose:  
(Mori et al., 1999; Conturo et al. 1999; Weinstein et al. 1999;  
Basser et al. 2000; Poupon et al. 2001; Mangin et al. 2002;  
Lazar et al. 2003; Taylor et al. 2012; ....)

Propagation via, e.g.:

smoothing diffusion vectors and solving differential equations;  
deflecting propagating tracts; allowing tracts themselves to  
'diffuse'; solving for global minimum energy of connections...

To date, no single 'best' algorithm, work continues:

- histology can't give perfect answers.
- some test models (phantoms) exist, but not brain-complex

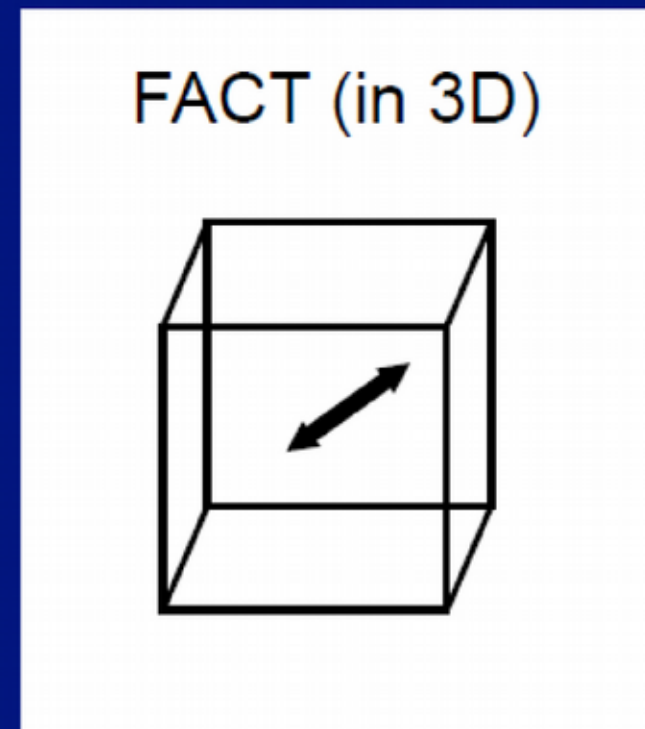
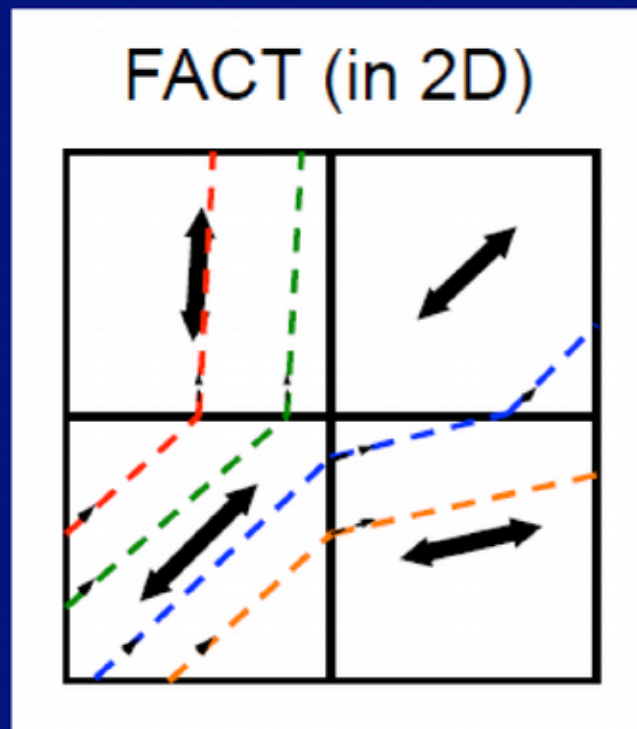
So, first question for using tractography in a study:

***Which algorithm to choose?***

# Popular technique: FACT

- FACT = Fiber Assessment by Continuous Tracking (Mori et al. 1999) [used more than 200 times in past 1.5 yrs]
  - Start in voxel with  $FA > 0.2$  (proxy definition for WM)
  - Follow 1st eigenvector/greatest diffusion direction to next voxel
  - Continue if  $FA > 0.2$  and angle between  $e_1$ s is  $< 45$  deg

*Ex.:*



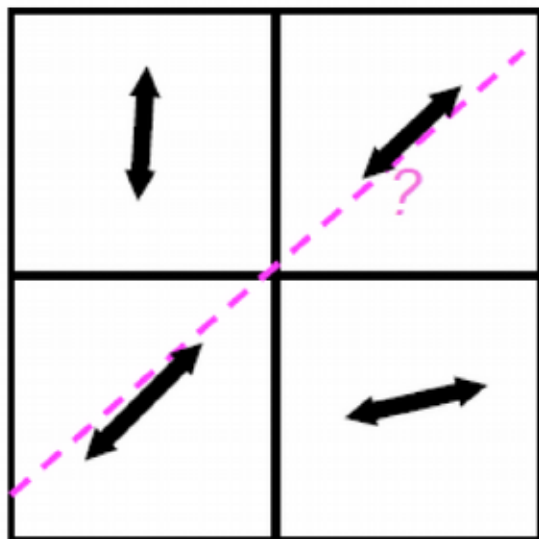
*Very simple, but actually, gives some decent results, e.g. many known tracts*

# Popular technique: FACT

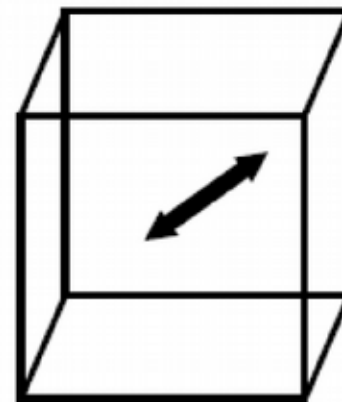
- FACT = Fiber Assessment by Continuous Tracking (Mori et al. 1999) [used more than 200 times in past 1.5 yrs]
  - Start in voxel with  $FA > 0.2$  (proxy definition for WM)
  - Follow 1st eigenvector/greatest diffusion direction to next voxel
  - Continue if FA stays  $> 0.2$  and angle between  $e_1$ s is  $< 45$  deg

*Ex.:*

FACT (in 2D)



FACT (in 3D)

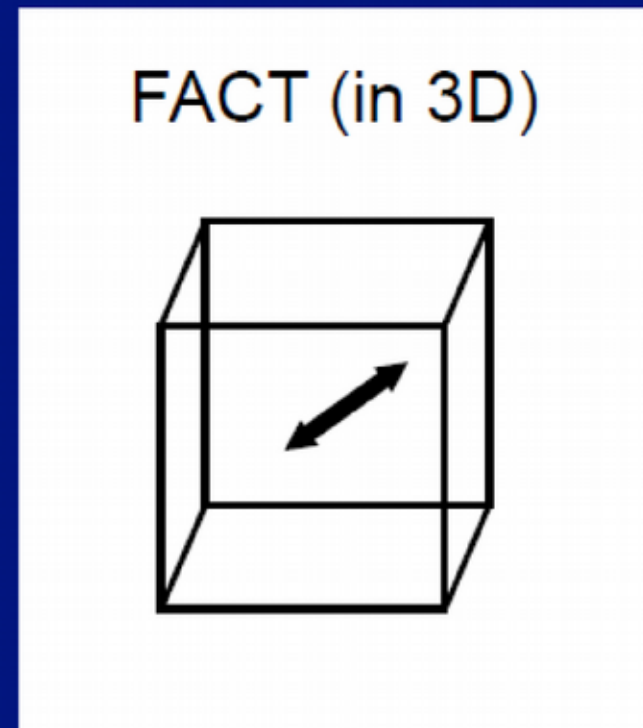
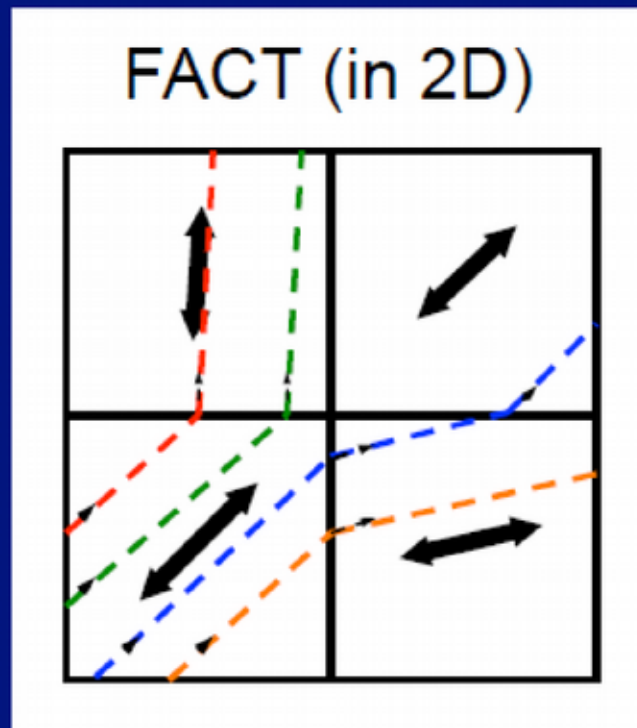


*Very simple, but actually, gives some decent results, e.g. many known tracts* *\*however... e.g. bias?*

# Popular technique: FACT

- FACT = Fiber Assessment by Continuous Tracking (Mori et al. 1999) [used more than 200 times in past 1.5 yrs]
  - Start in voxel with  $FA > 0.2$  (proxy definition for WM)
  - Follow 1st eigenvector/greatest diffusion direction to next voxel
  - Continue if  $FA > 0.2$  and angle between  $e_1$ s is  $< 45$  deg

*Ex.:*



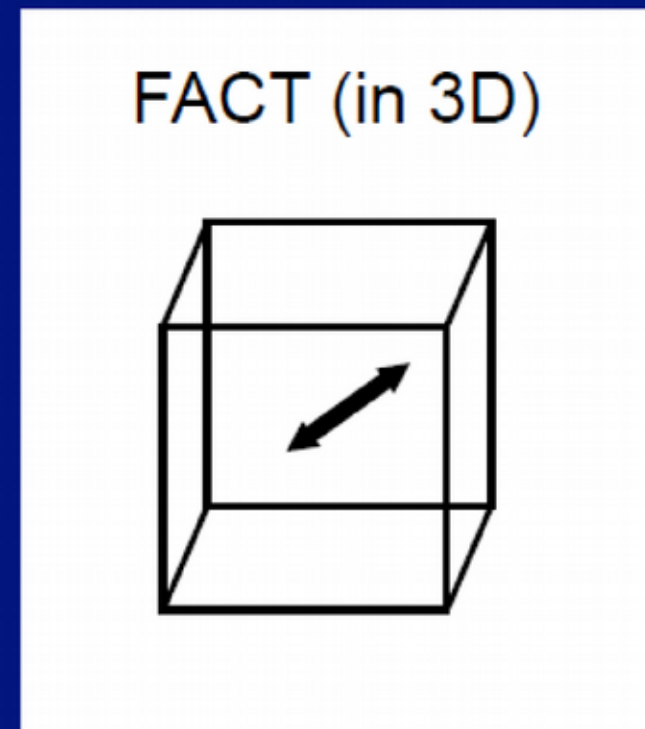
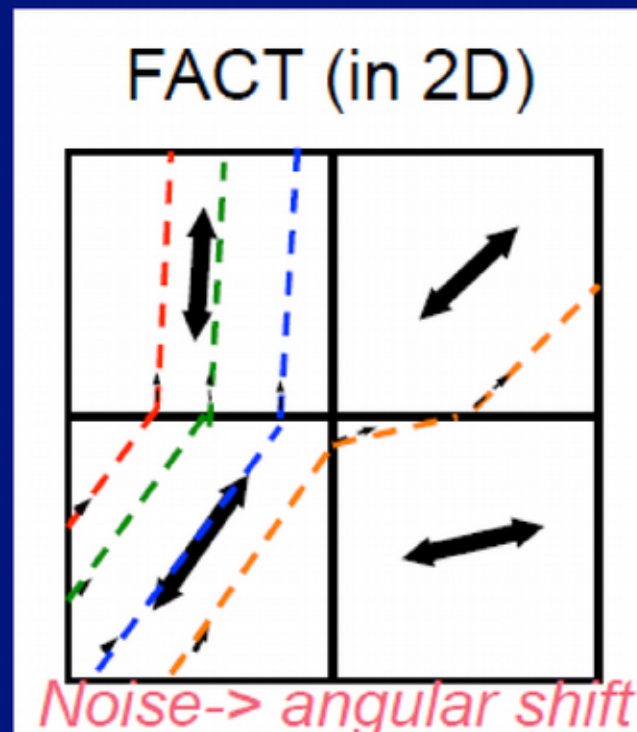
*Very simple, but actually, gives some decent results, e.g. many known tracts* *\*however... e.g. bias? noise dependence?*



# Popular technique: FACT

- FACT = Fiber Assessment by Continuous Tracking (Mori et al. 1999) [used more than 200 times in past 1.5 yrs]
  - Start in voxel with  $FA > 0.2$  (proxy definition for WM)
  - Follow 1st eigenvector/greatest diffusion direction to next voxel
  - Continue if  $FA > 0.2$  and angle between  $e_1$ s is  $< 45$  deg

*Ex.:*



*Very simple, but actually, gives some decent results, e.g. many known tracts* *\*however... e.g. bias? noise dependence?*

# Improving FACT->

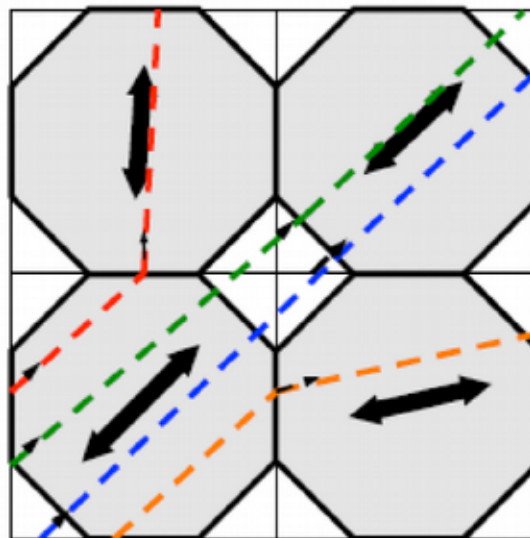
- Start by thinking: what properties a 'good' algorithm should have?
  - 1) Should be independent of coordinate axes (i.e., results invariant to rotation of data set)
  - 2) Should improve with spatial resolution (convergence in resolution)  
e.g., like in calculus, diagonals are better approximated with small grid steps
  - 3) Should improve with SNR (converge in SNR)
  - 4) Should not have strong instability with or dependence on noise

# Improving FACT->

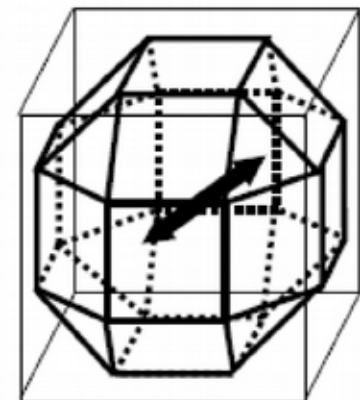
- Start by thinking: what properties a 'good' algorithm should have?
  - 1) Should be independent of coordinate axes (i.e., results invariant to rotation of data set)
  - 2) Should improve with spatial resolution (convergence in resolution)  
e.g., like in calculus, diagonals are better approximated with small grid steps
  - 3) Should improve with SNR (converge in SNR)
  - 4) Should not have strong instability with or dependence on noise

**Posit:** including diagonal (ID) propagation helps 1 and 4, check about other props.

FACTID (in 2D)



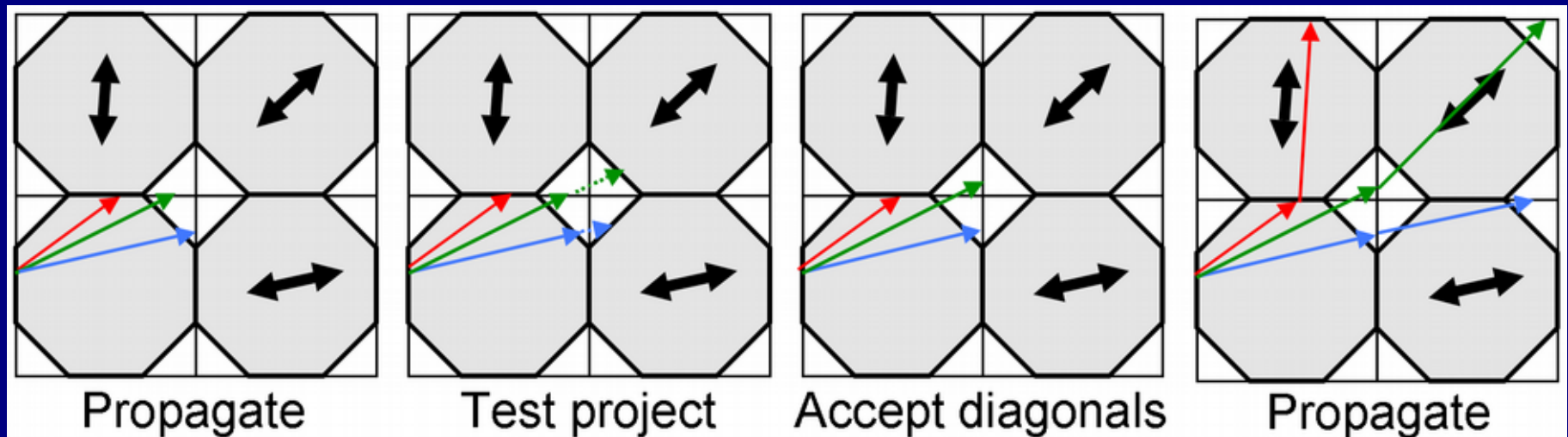
FACTID (in 3D)



# FACTID (FACT Including Diagonals):

+ Utilize simple check for diagonals.

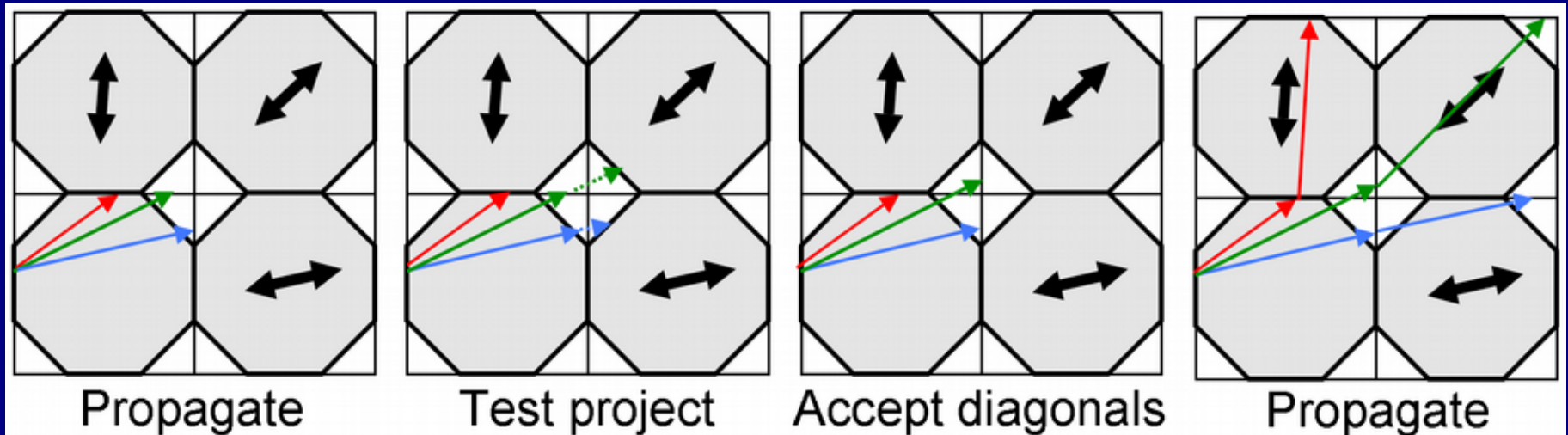
(2D) Schematic:



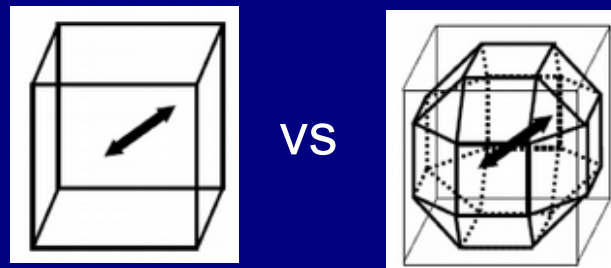
# FACTID (FACT Including Diagonals):

+ Utilize simple check for diagonals.

(2D) Schematic:



NB that in (3D) FACT, a single voxel has 6 neighbors for propagation, while in FACTID, a voxel has 26 neighbors propagation.



(Taylor, Cho, Lin & Biswal, 2012)

# Test 1: Rotational invariance

*A test for consistency of results when axes of data have been rotated; here, using data from a real subject (scan axes rotated)*

FACTID

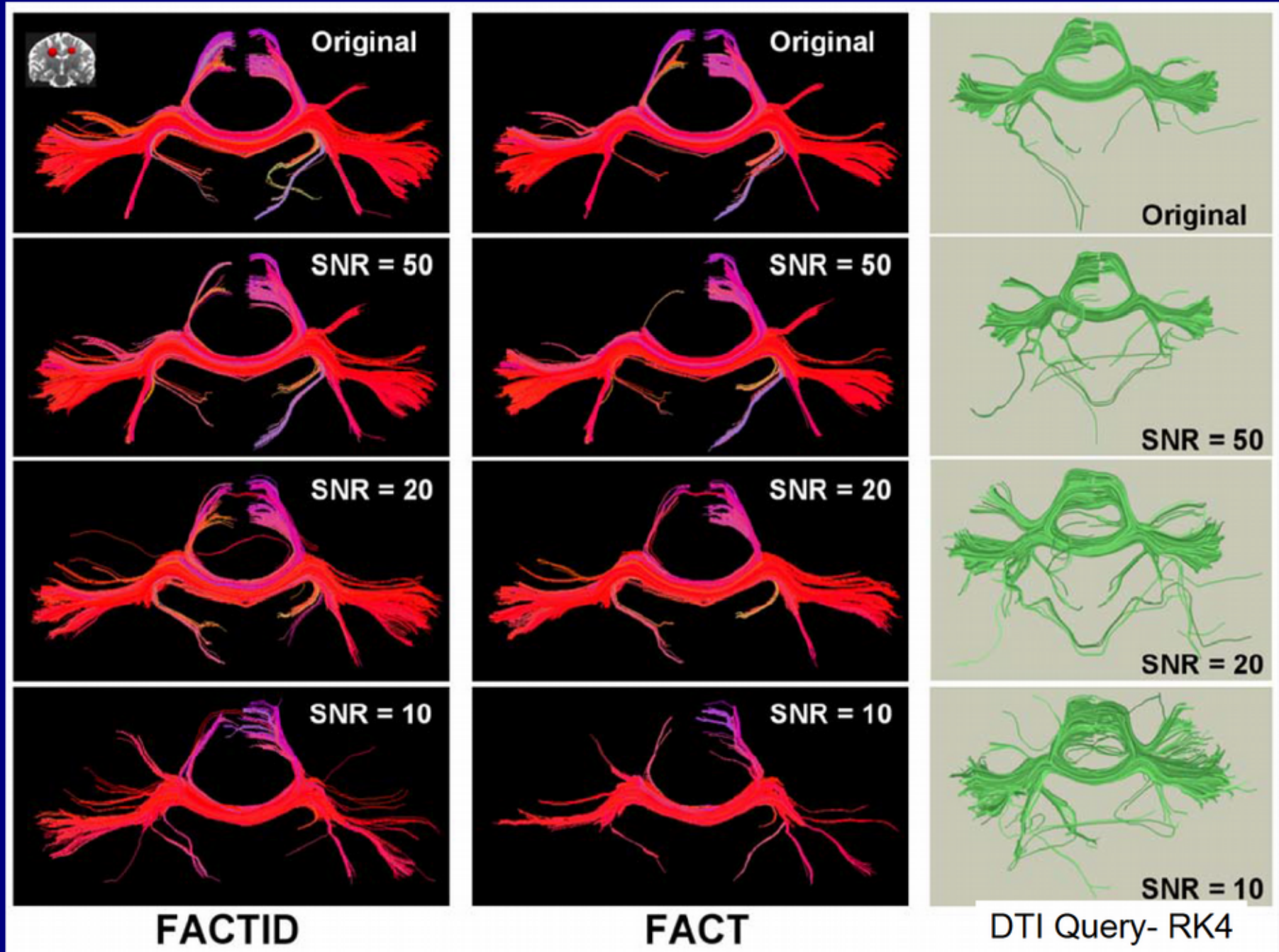


FACT



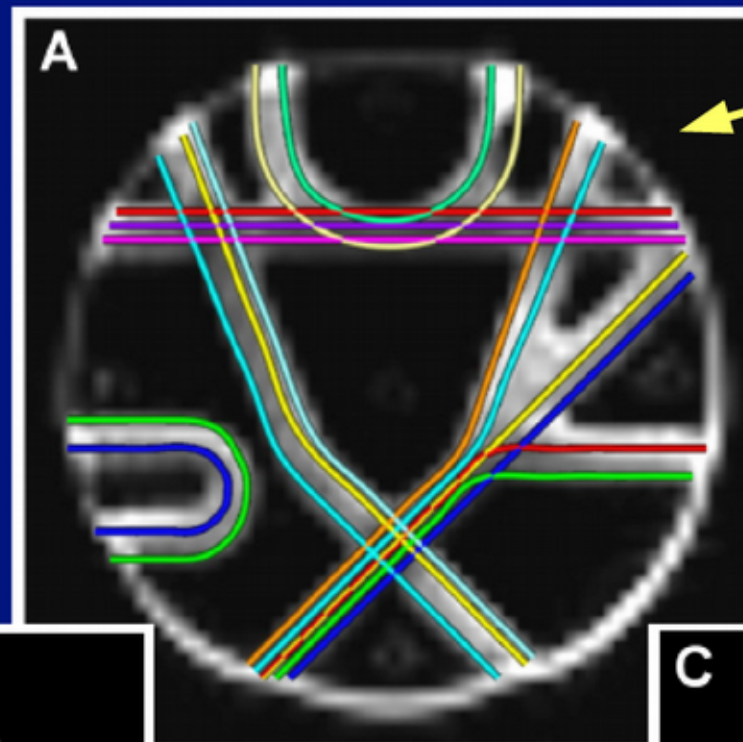
(Taylor, Cho, Lin & Biswal, 2012)

# Test 3: Noise sensitivity



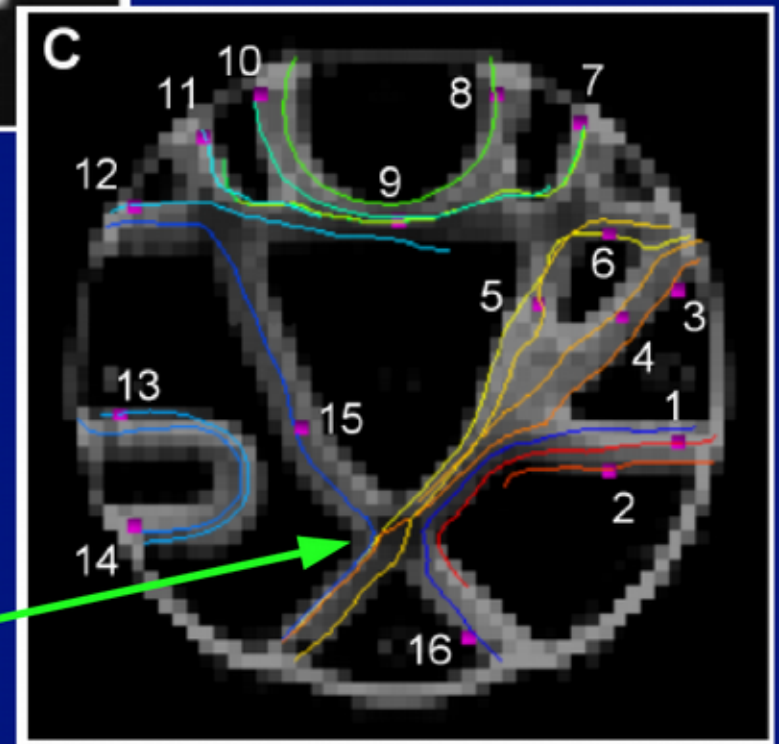
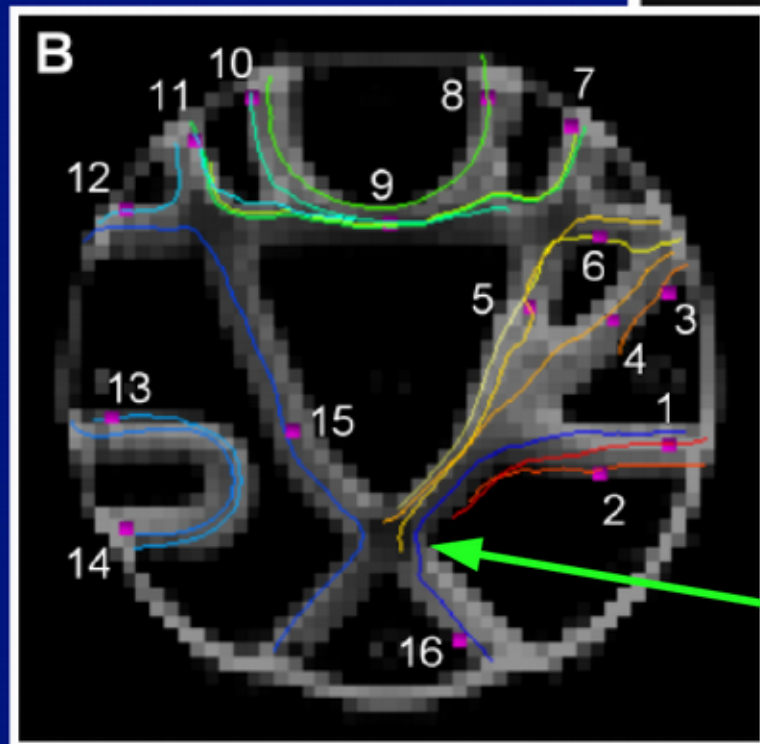
# Test 5: Phantom Set

Fillard et al.  
(2011, NI)  
test phantom



FACT

FACTID



(Taylor, Cho, Lin  
& Biswal, 2012)

e.g. compare



# Importance of being processed (in earnest)

NB words of wisdom from wikipedia GIGO entry:

*On two occasions I have been asked, "Pray, Mr. Babbage, if you put into the machine wrong figures, will the right answers come out?" ... I am not able rightly to apprehend the kind of confusion of ideas that could provoke such a question.*

—Charles Babbage, [Passages from the Life of a Philosopher](#)

# Importance of being processed (in earnest)

NB words of wisdom from wikipedia GIGO entry:

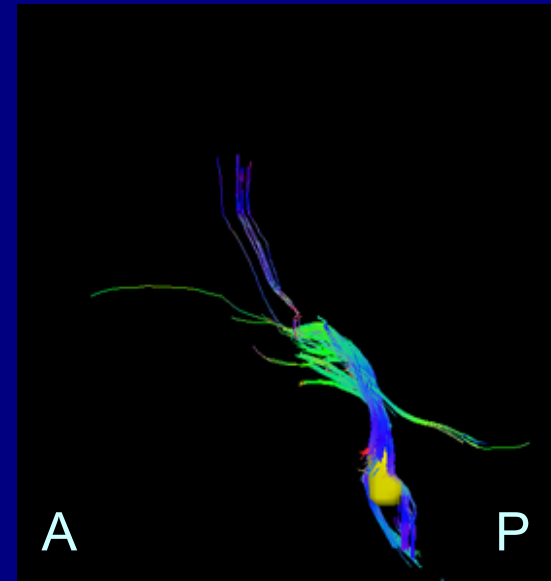
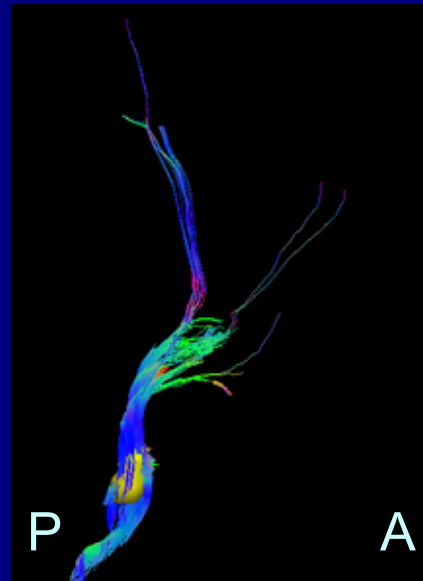
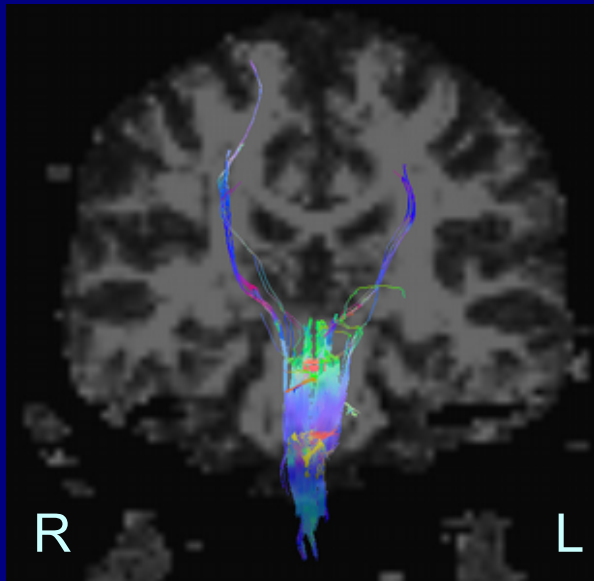
*On two occasions I have been asked, "Pray, Mr. Babbage, if you put into the machine wrong figures, will the right answers come out?" ... I am not able rightly to apprehend the kind of confusion of ideas that could provoke such a question.*

—Charles Babbage, [Passages from the Life of a Philosopher](#)

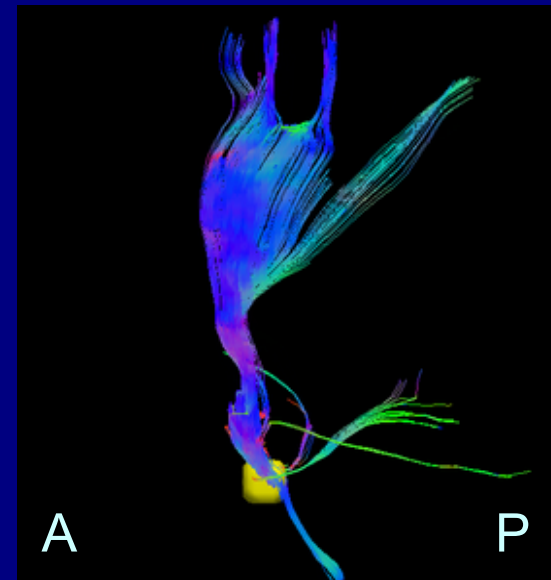
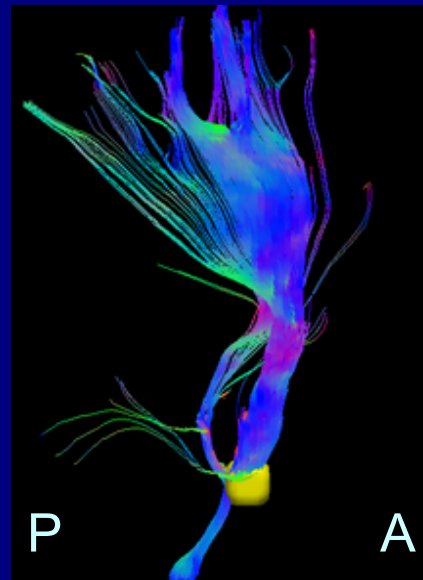
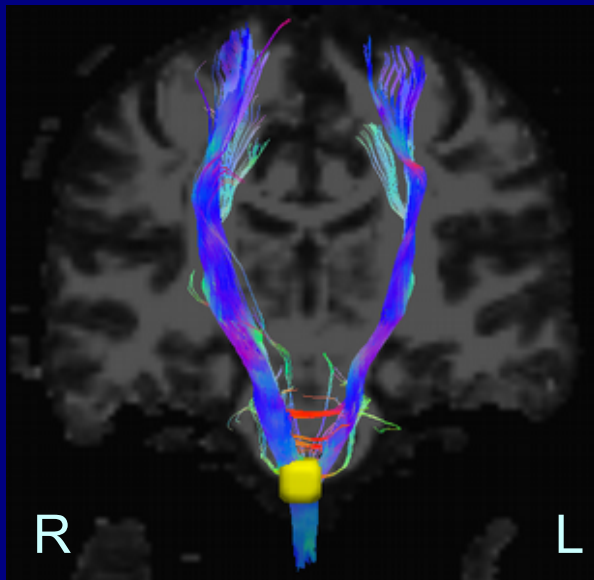
→ In addition to the tracking algorithm, the quality of data acquisition and preparation matter quite a bit (as seen in morning TORTOISE session).

# Importance of being processed (in earnest)

unprocessed



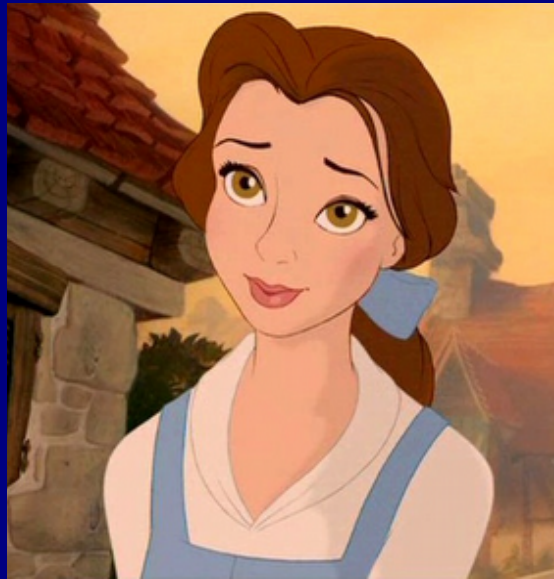
TORTOISED



Data from the morning session, same target ROI in brainstem.  
Consider reach of tracts, symmetry, physiology, etc.

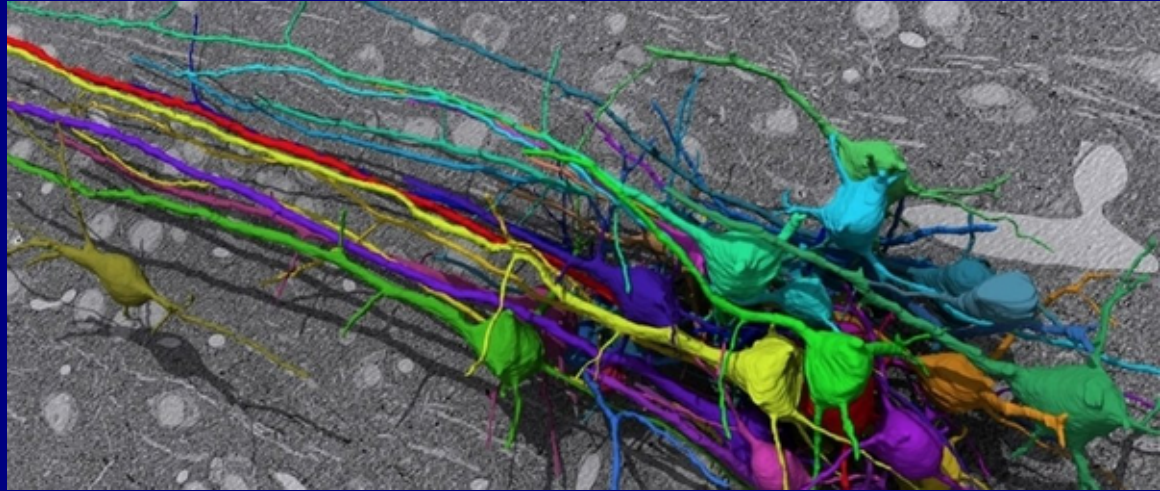
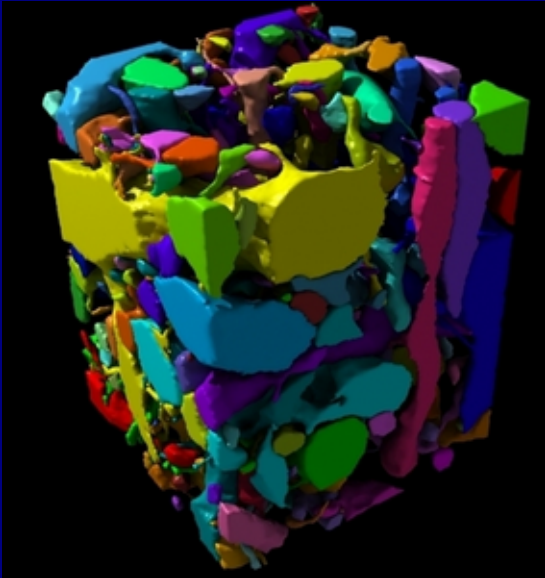
Cinematic side note:

*La Belle et la Bête* of tractography



# Known Challenges for Tracking

- + Axon diameters are of order a few micrometers
- + MRI voxel size is of order millimeters

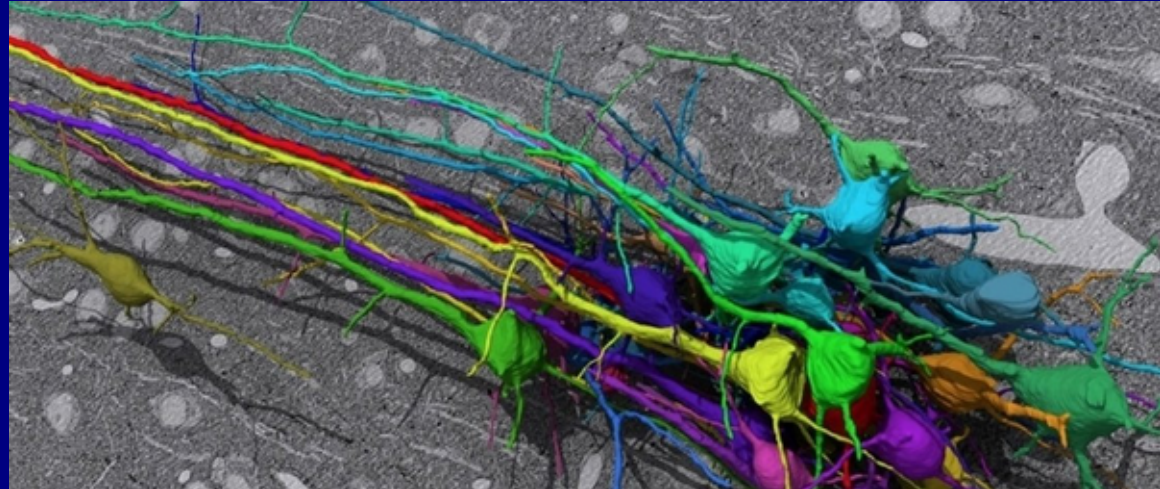
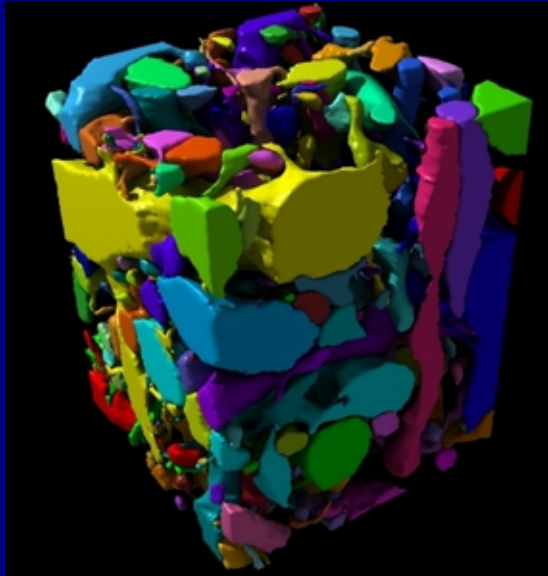


*(images of Eyewire data via NPR website)*

# Known Challenges for Tracking

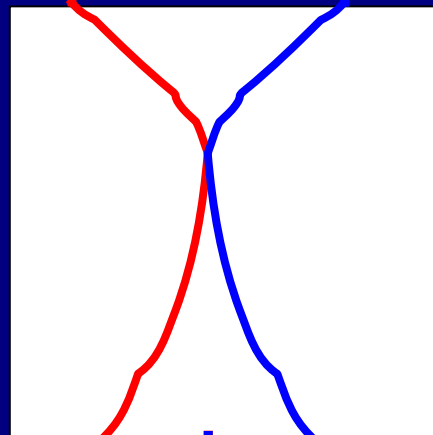
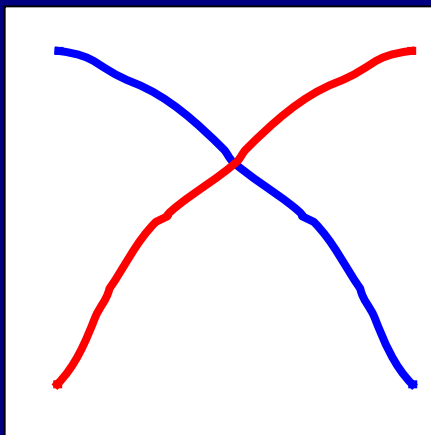


- + Axon diameters are of order a few micrometers
- + MRI voxel size is of order millimeters



*(images of Eyewire data via NPR website)*

- + WM regions are tightly packed, with many connections and potentially complicated sub-voxel scale structure



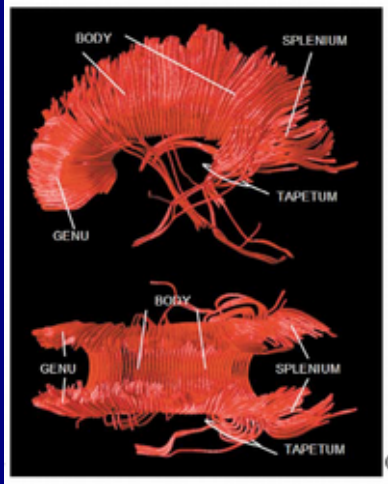
Crossing/kissing fibers can:

- Lower FA (stop tracking)
- Redirect (or *not*) tracking incorrectly.

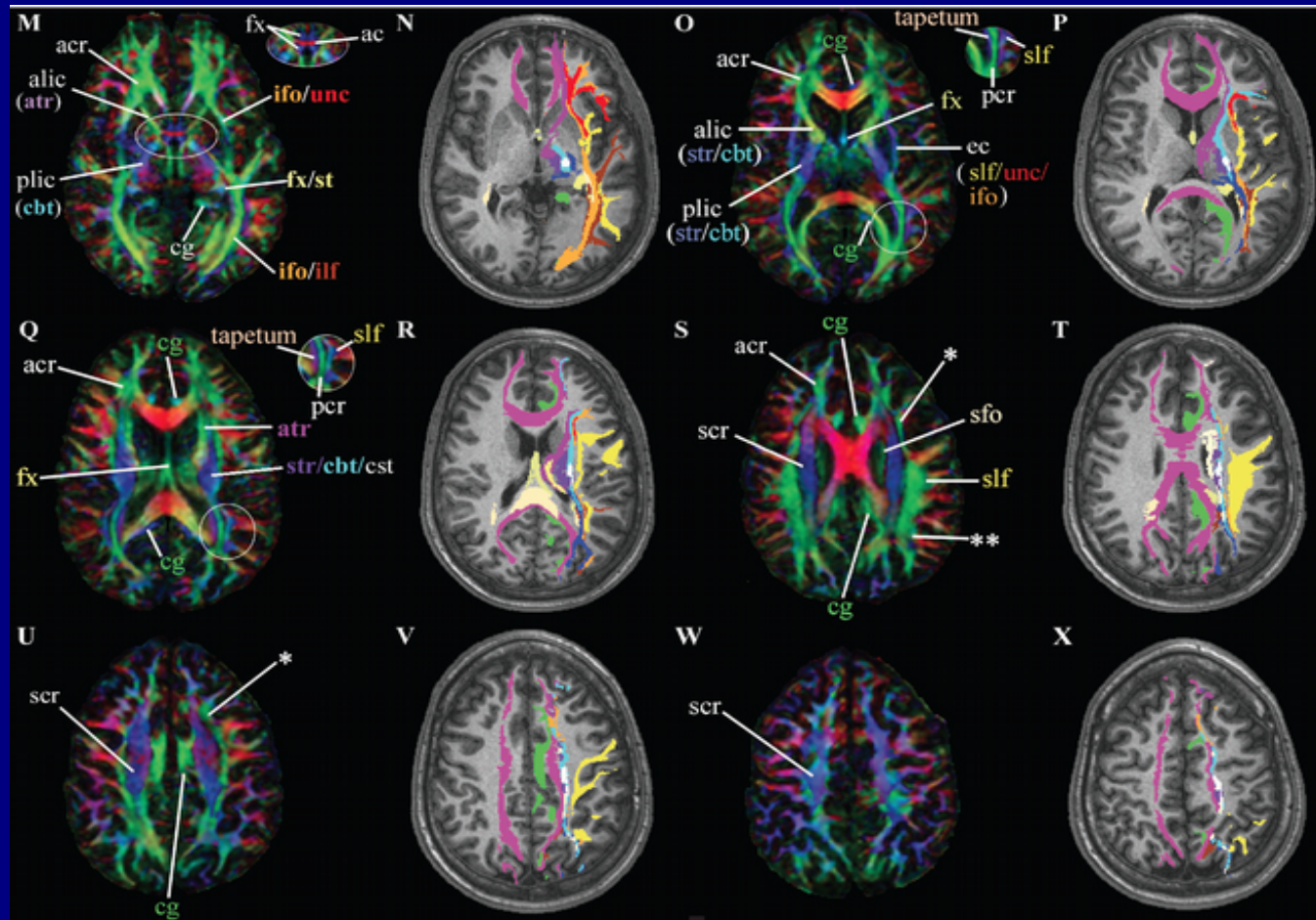
# Achievements of Tracking



- + Reproduction of many known pathways
- + In vivo vs post-mortem information



(Bammer et al., 2003)



(Wakana et al., 2004)

# Light at the end of the tunnel?



Tractography seems useful and logically consistent as follows:

- 1) GM ROIs *are* connected by WM skeleton.
- 2) We can use tracking to estimate and highlight WM *likely* to be associated with GM ROIs.
- 3) One can then use DTI parameters in the tracked 'WM ROIs' for quantitative comparisons (or use ROIs as masks for other data).
- 4) Tractography can parcellate the WM skeleton based on the subject's own data.
- 5) Avoid interpreting reconstructed tracks to represent literal, underlying fibers.