

# Quick Tasks for Interactive Learning-by-Doing

RW Cox

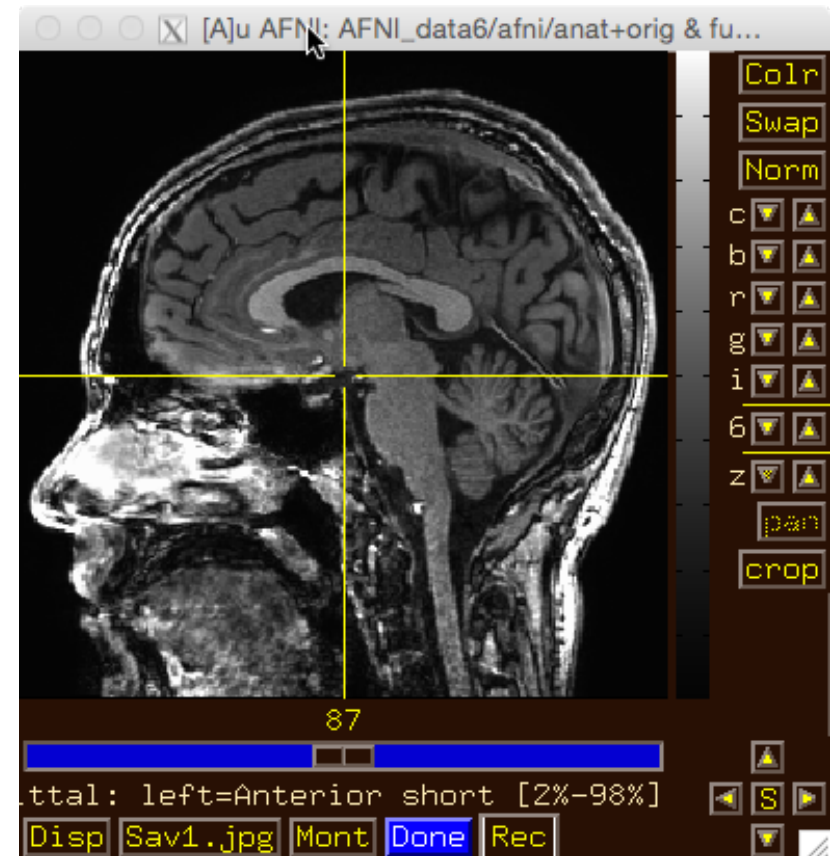
- Try the **BHelp** button
  - Over some other GUI button
  - Over an image
  - Over the grayscale bar next to the image
- Bhelp works with majority of GUI



- Drag image viewer far away, then
- Right **click**-----
  - what happens to the image window?

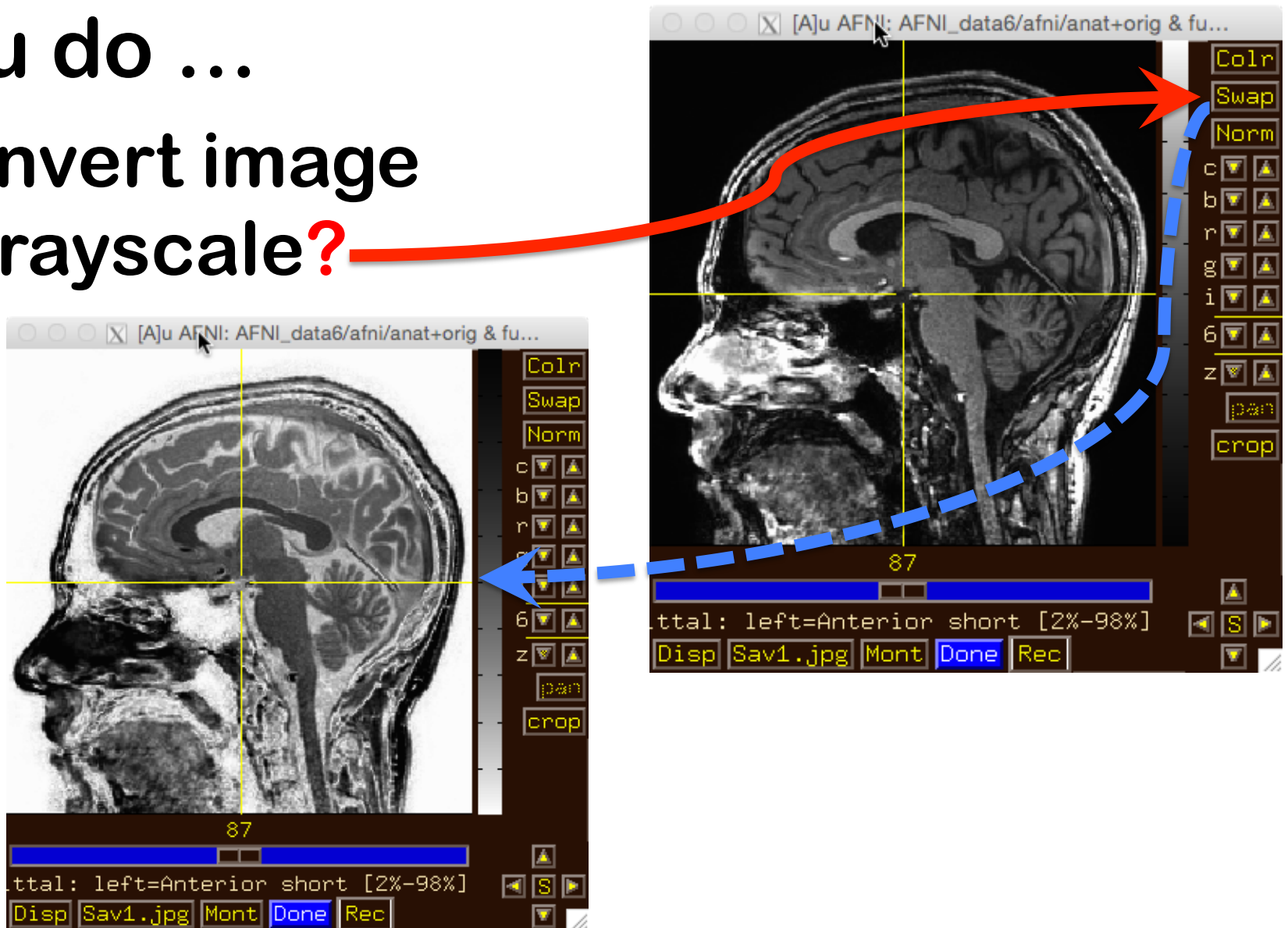


- Image viewer #1: Can you do ...
  - Invert image grayscale?



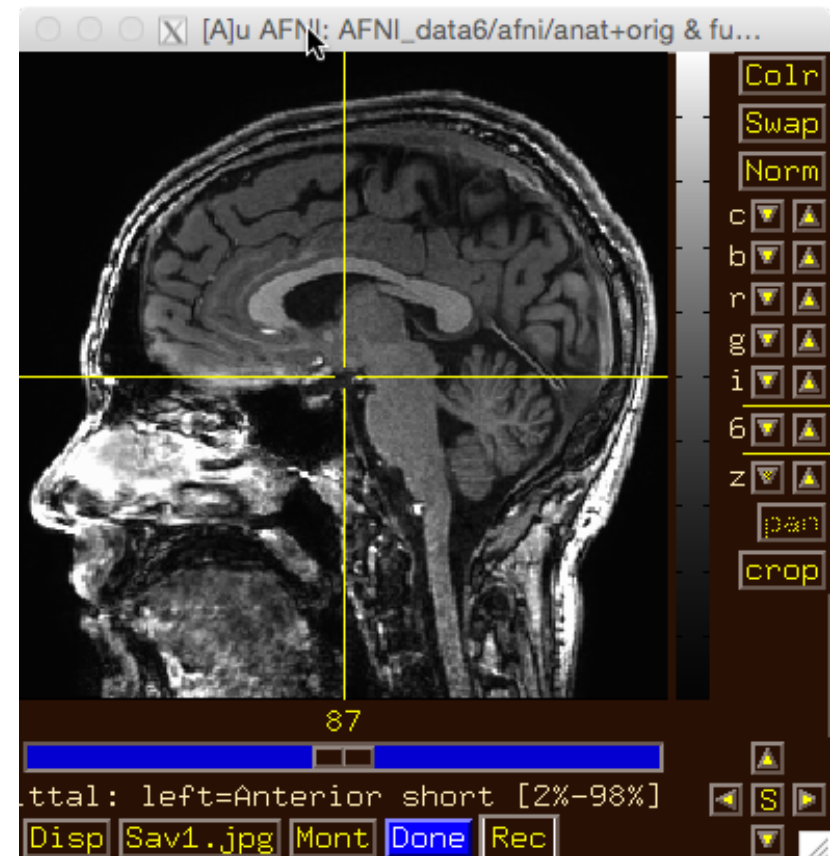
- Image viewer #1: Can you do ...

- Invert image grayscale?



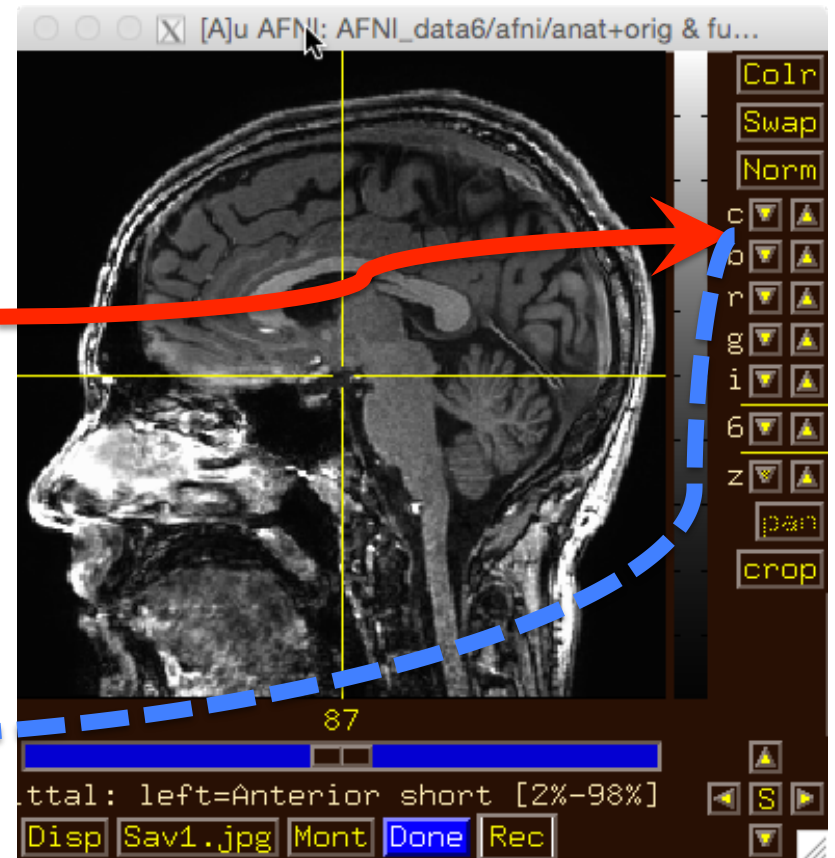
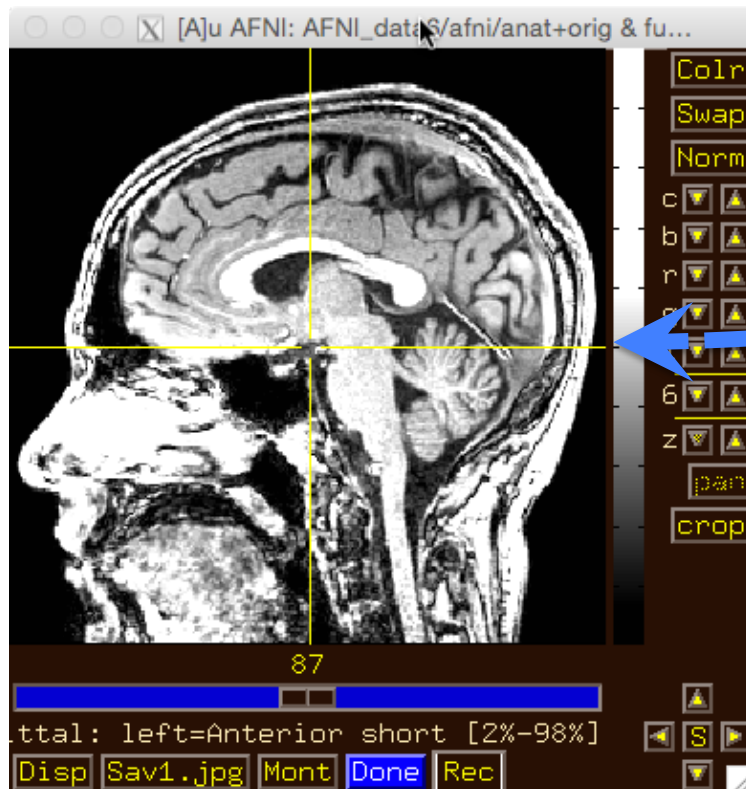
- Image viewer #2: Can you do ...

- Change contrast and/or brightness?



- Image viewer #2: Can you do ...

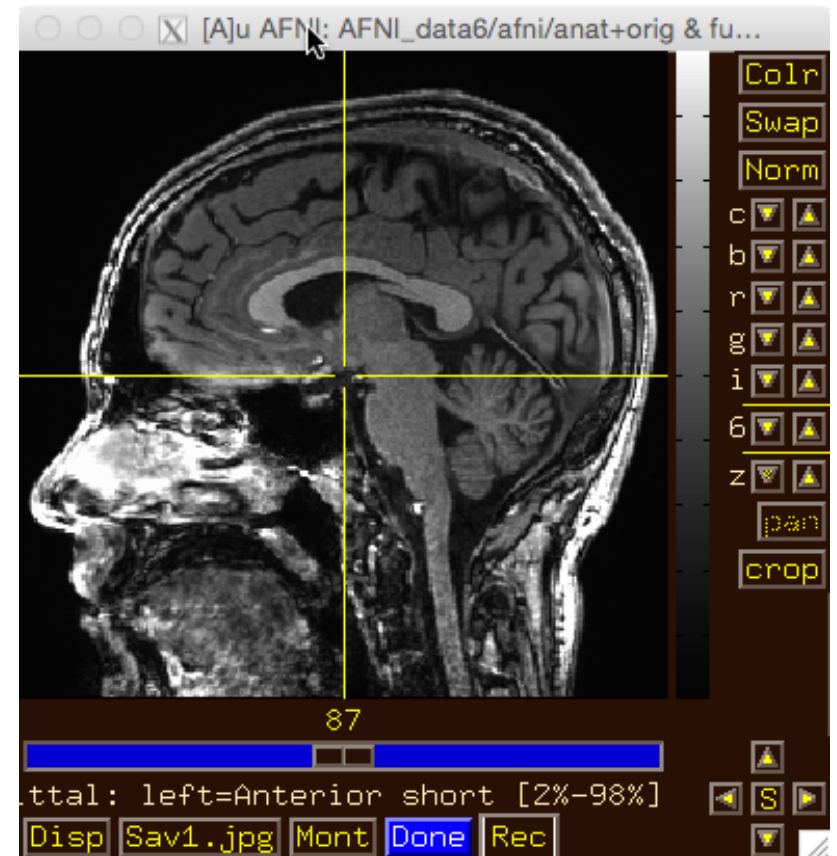
- Change contrast and/or brightness?



You can also left-click mouse, hold button down, and drag up/down or left/right to change brightness or contrast



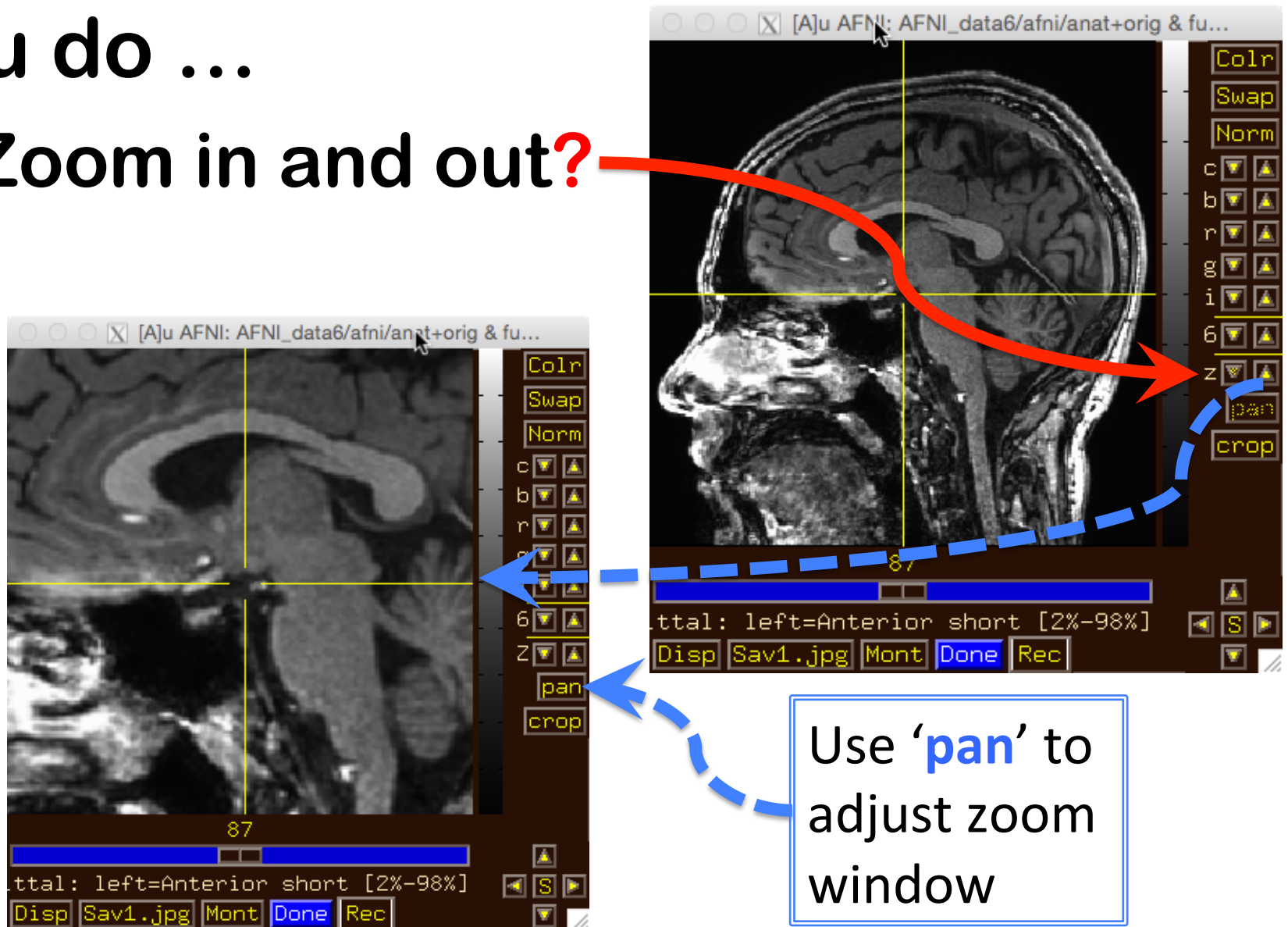
- Image viewer #3: Can you do ...
  - Zoom in and out?





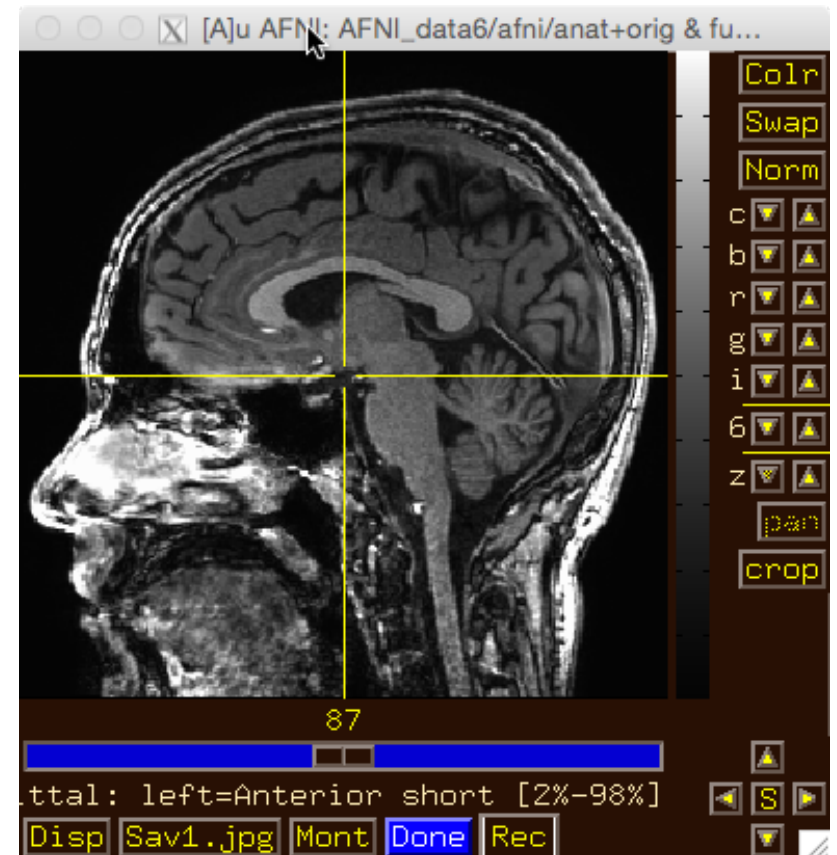
- Image viewer #3: Can you do ...

- Zoom in and out?



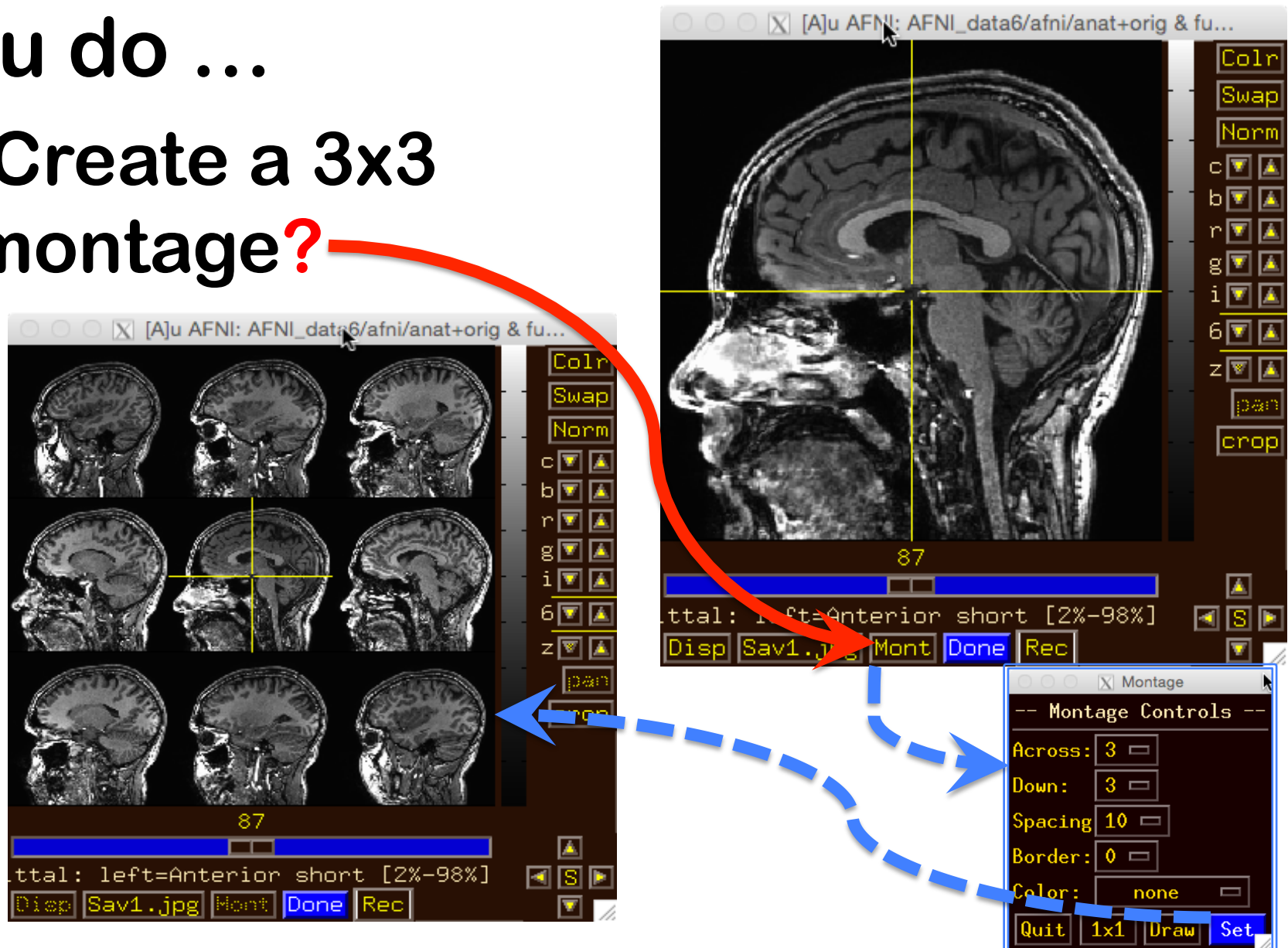
- Image viewer #4: Can you do ...

- Create a 3x3 montage?



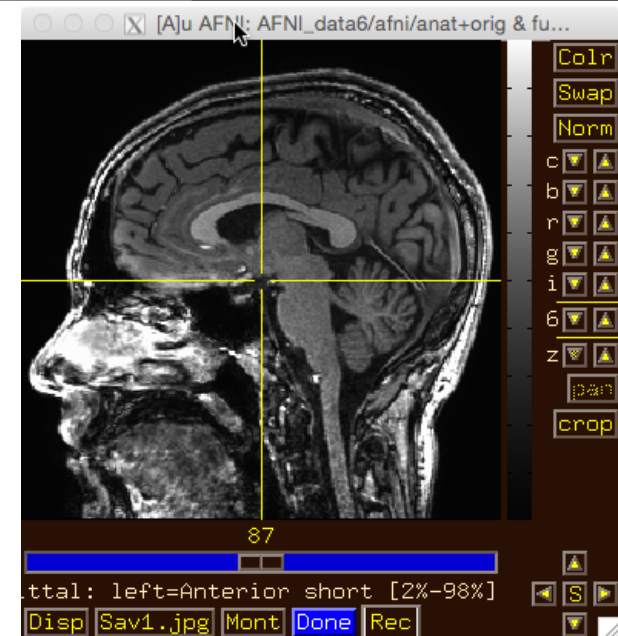
# • Image viewer #4: Can you do ...

- Create a 3x3 montage?



- Try some of the right-click popup menus

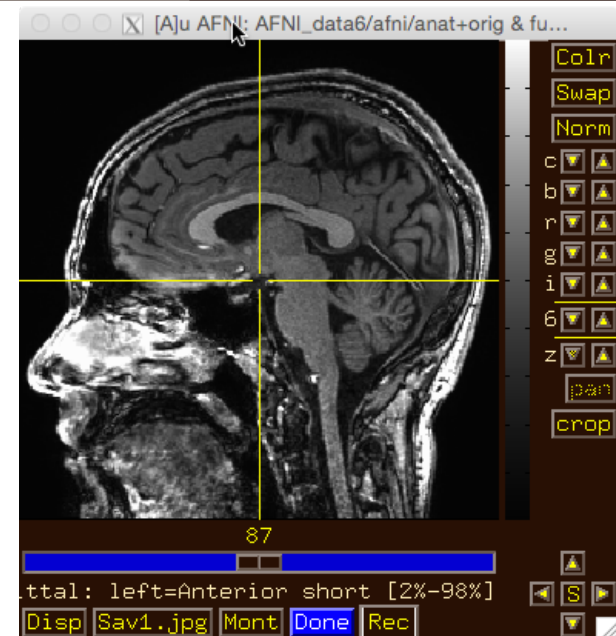
– this one is simple: for spatial coordinates



- Try some of the right-click popup menus

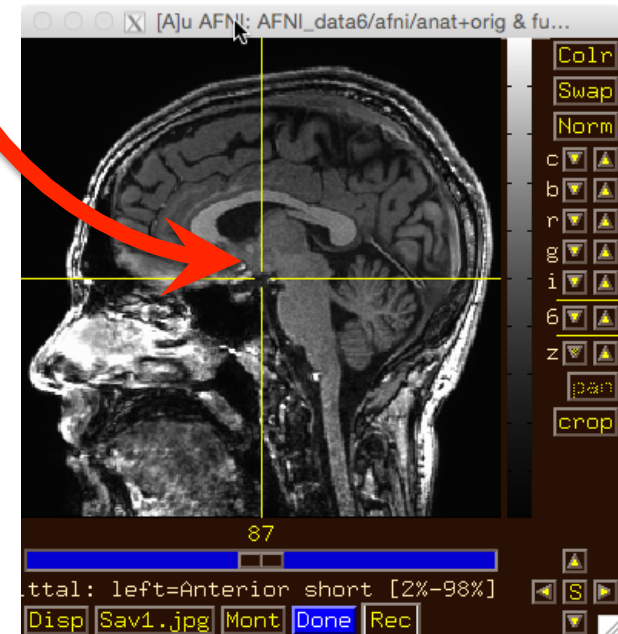
menus

- this one is mostly for fun



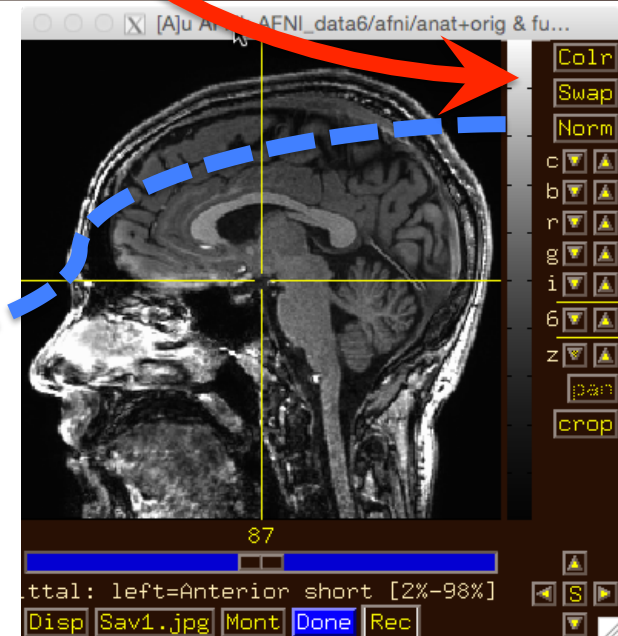
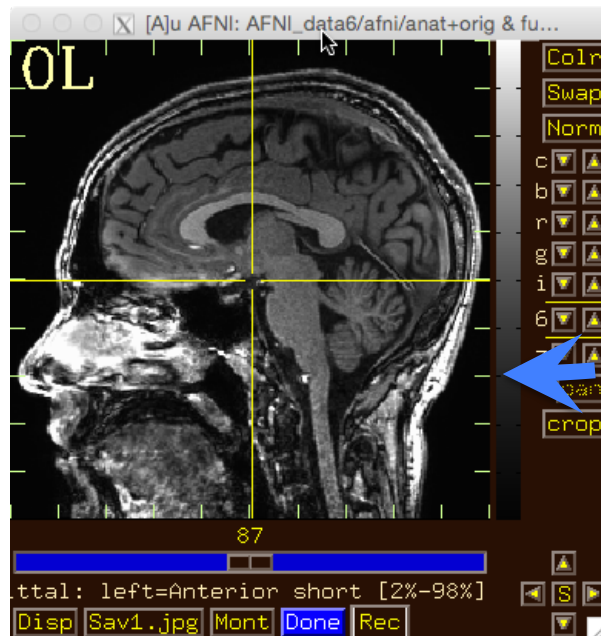
- Try some of the right-click popup menus

–this one has several commonly used functions for image display and navigation





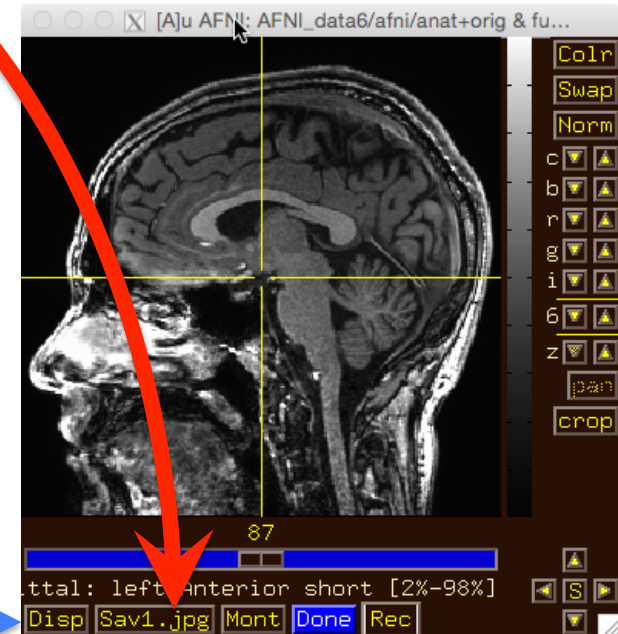
- Try some of the right-click popup menus
- has many rarely used options





- Try some of the right-click popup menus

– this one is a shortcut for some options on the more complicated ‘Disp’ menu



- What does ‘I’ keypress do to graph? Then ‘i’?
- Use BHelp in graph window
  - Shortcut keys
  - Click **Opt** menu for more shortcuts, etc
- Change vertical **Grid** spacing to 15

