



AFNI



Didactics and Demonstrations

Learning-by-Doing

March 2020



Following along requires installing **AFNI** – see next slide

Getting Setup

1. Install **AFNI** from <https://bit.ly/AFNIstuff>
 - Including the **Prep for Bootcamp**
 - Which will include the data we use
2. After proper setup, data for this video should be in directory **AFNI_data6/afni**
3. In a terminal window, **cd** into that directory
4. Type command **afni** to view datasets
 - Type command **ls** to see file listing in directory

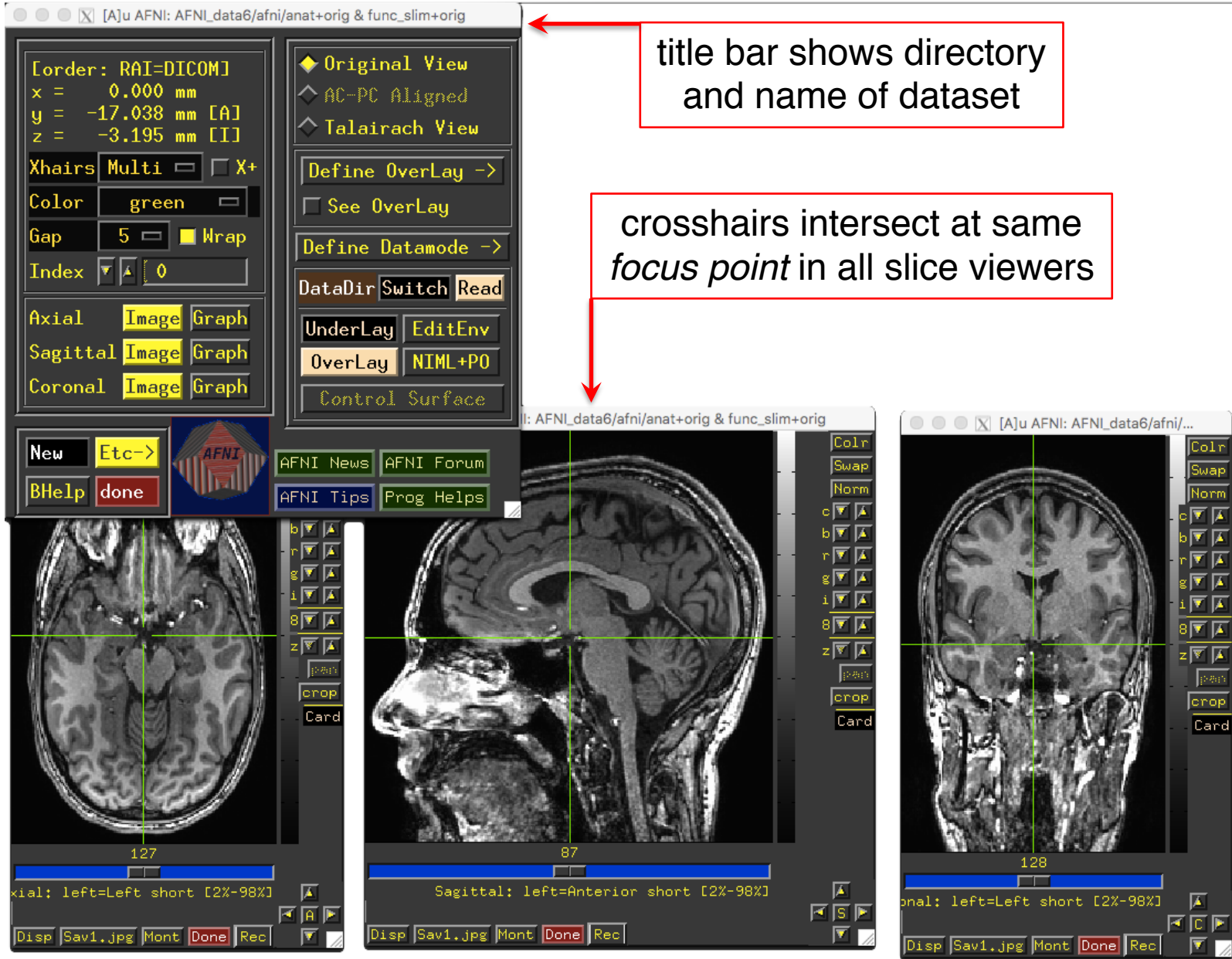
Screen Should Look Something Like This

AFNI
Controller

title bar shows directory
and name of dataset

crosshairs intersect at same
focus point in all slice viewers

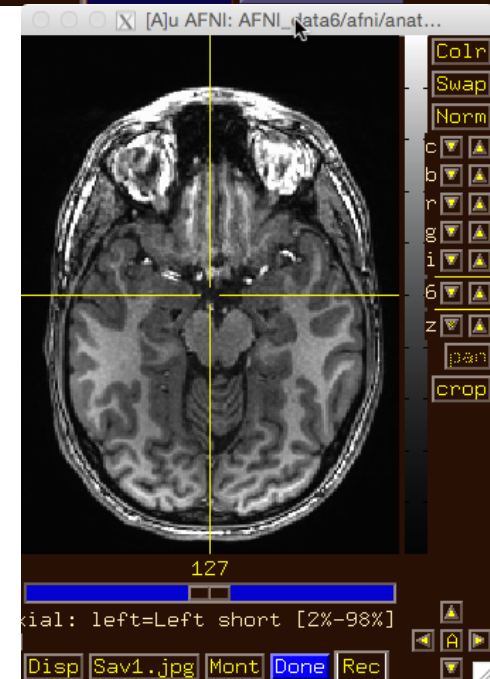
Image
viewers



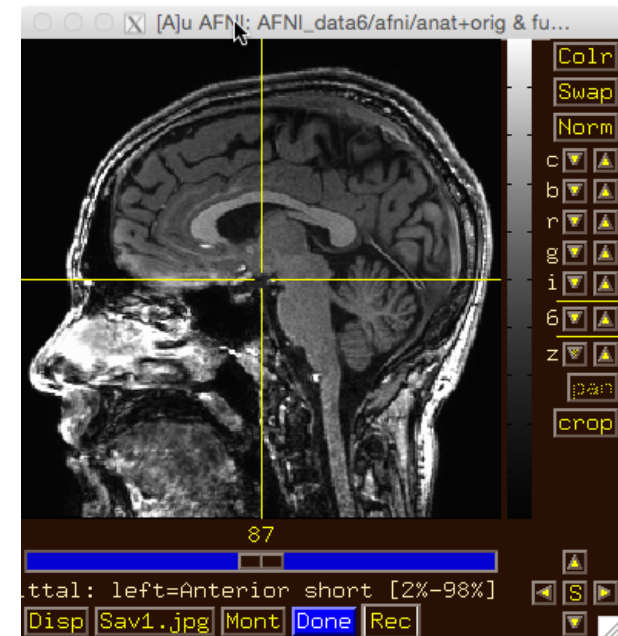
And now – an
Interlude with **AFNI**
Hands-On



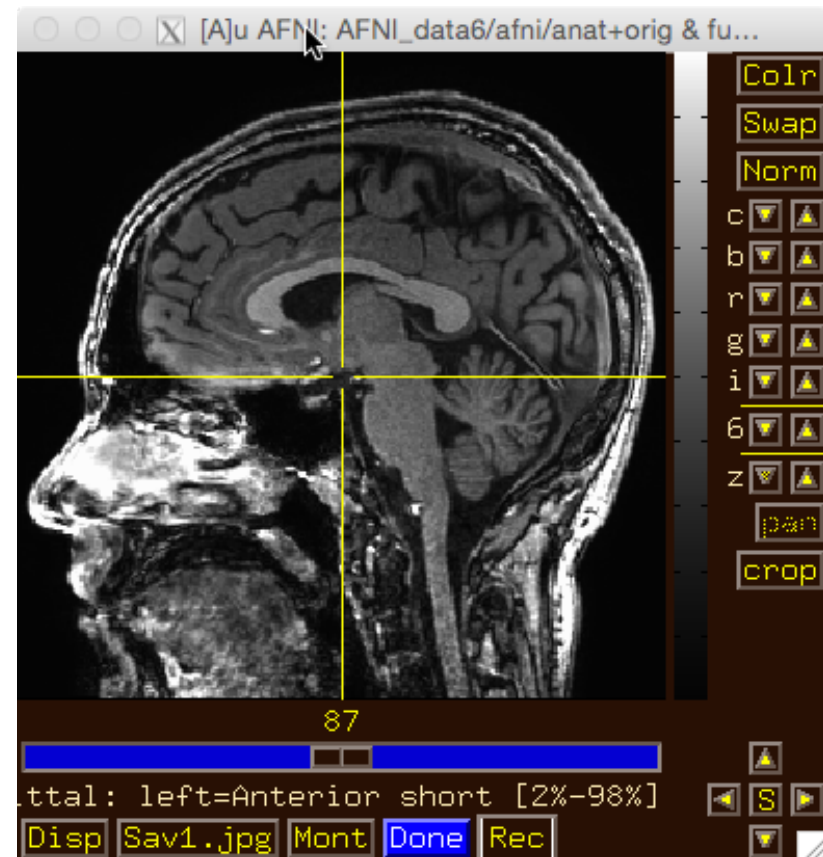
- Try the **BHelp** button
 - Over some other GUI button
 - Over an image
 - Over the grayscale bar next to the image
- Bhelp works with majority of GUI



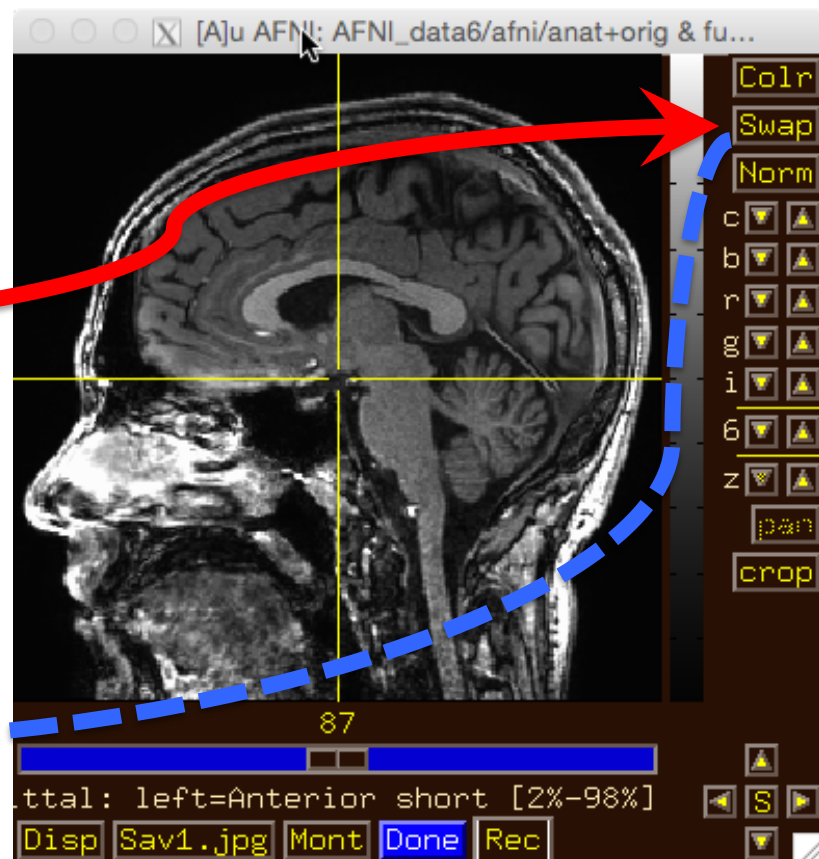
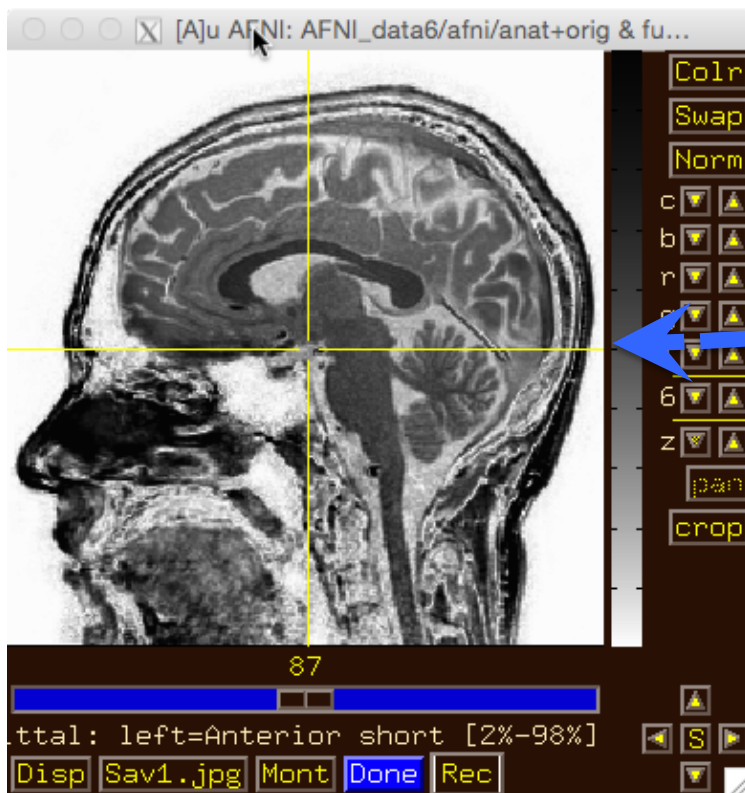
- Drag image viewer far away, then
- Right **click**-----
 - what happens to the image window?



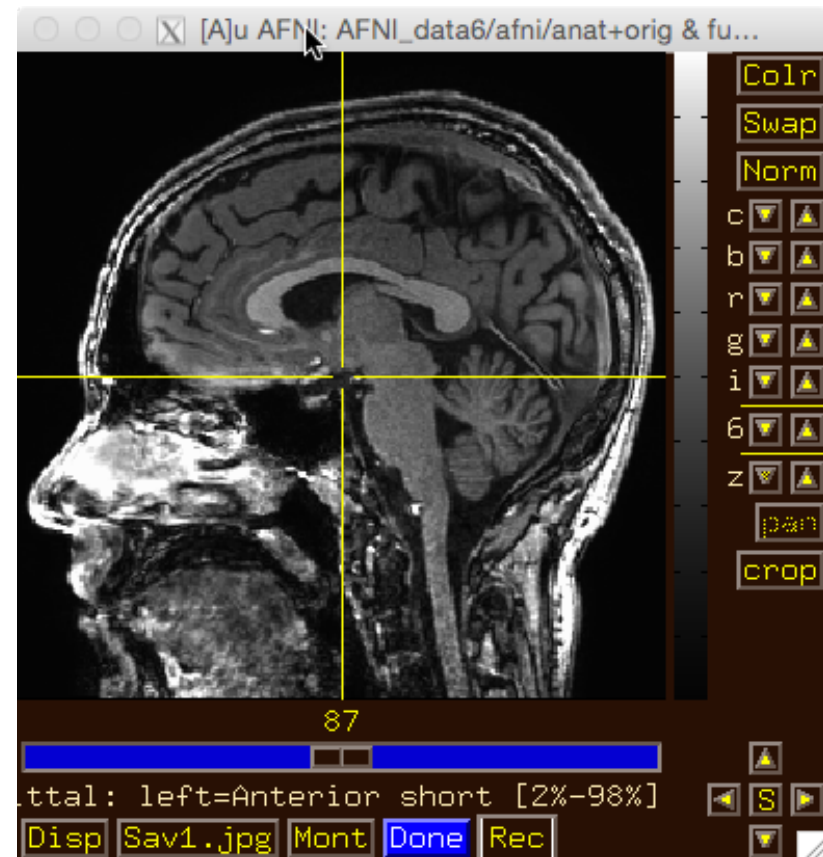
- Image viewer #1:
Can you do ...
 - Invert image grayscale?



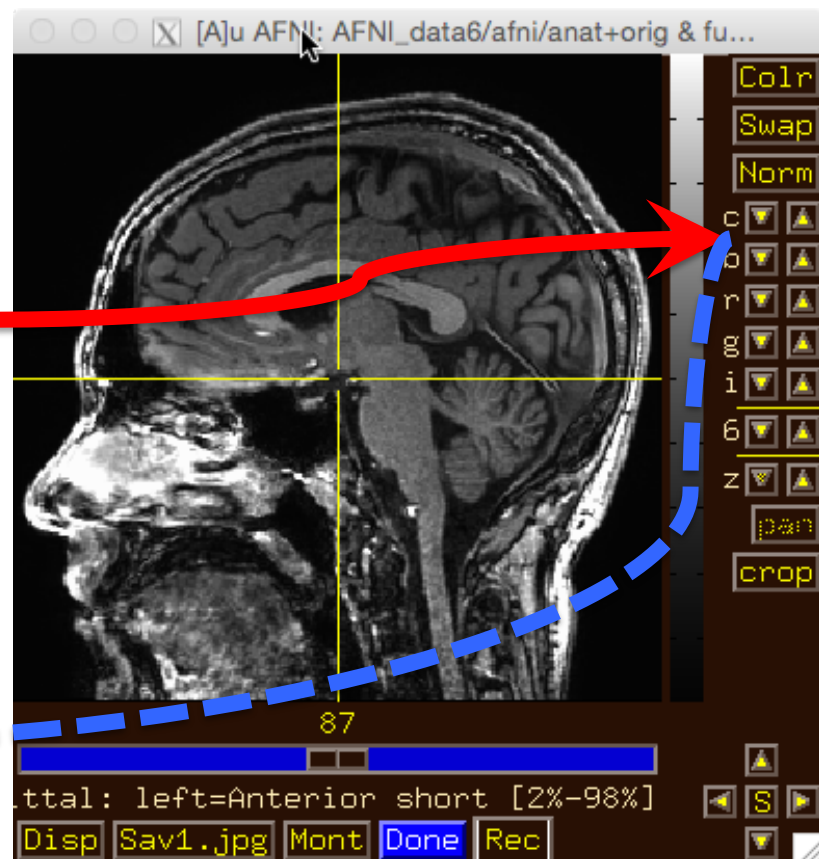
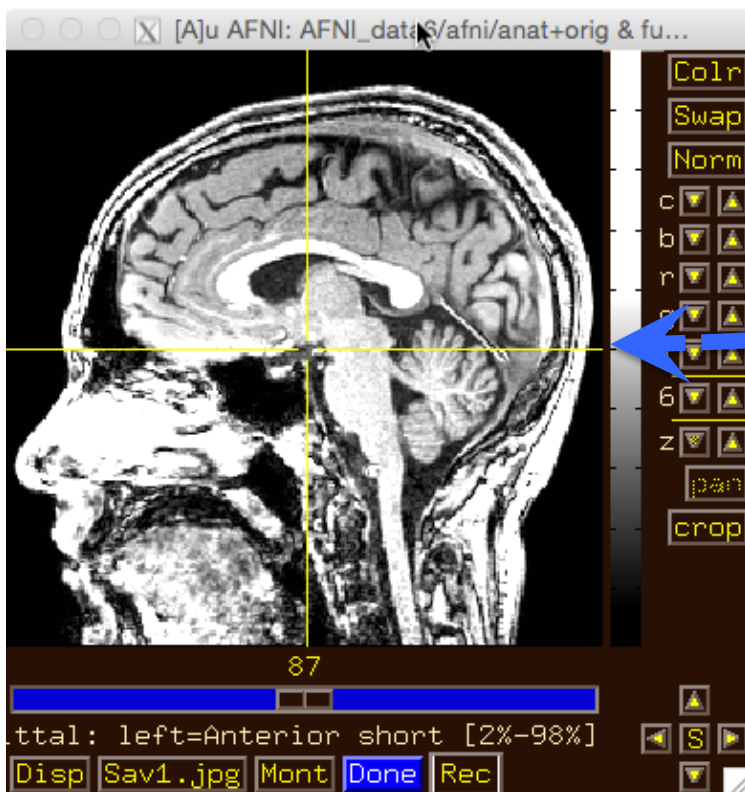
- Image viewer #1:
Can you do ...
 - Invert image grayscale?



- Image viewer #2:
Can you do ...
 - Change contrast and/or brightness?

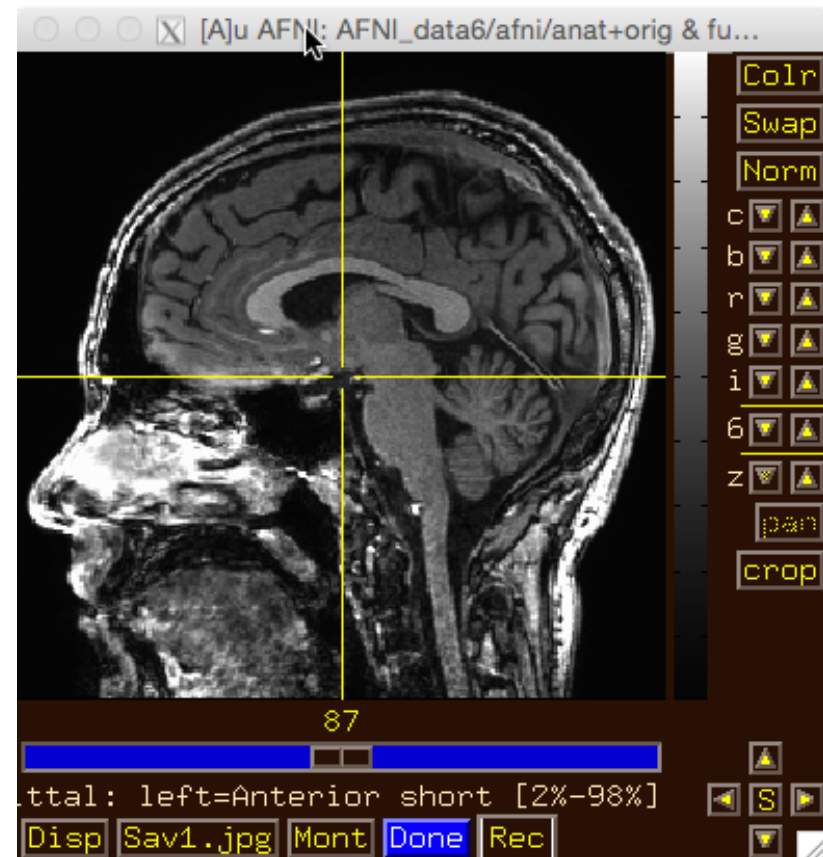


- Image viewer #2:
Can you do ...
 - Change contrast and/or brightness?

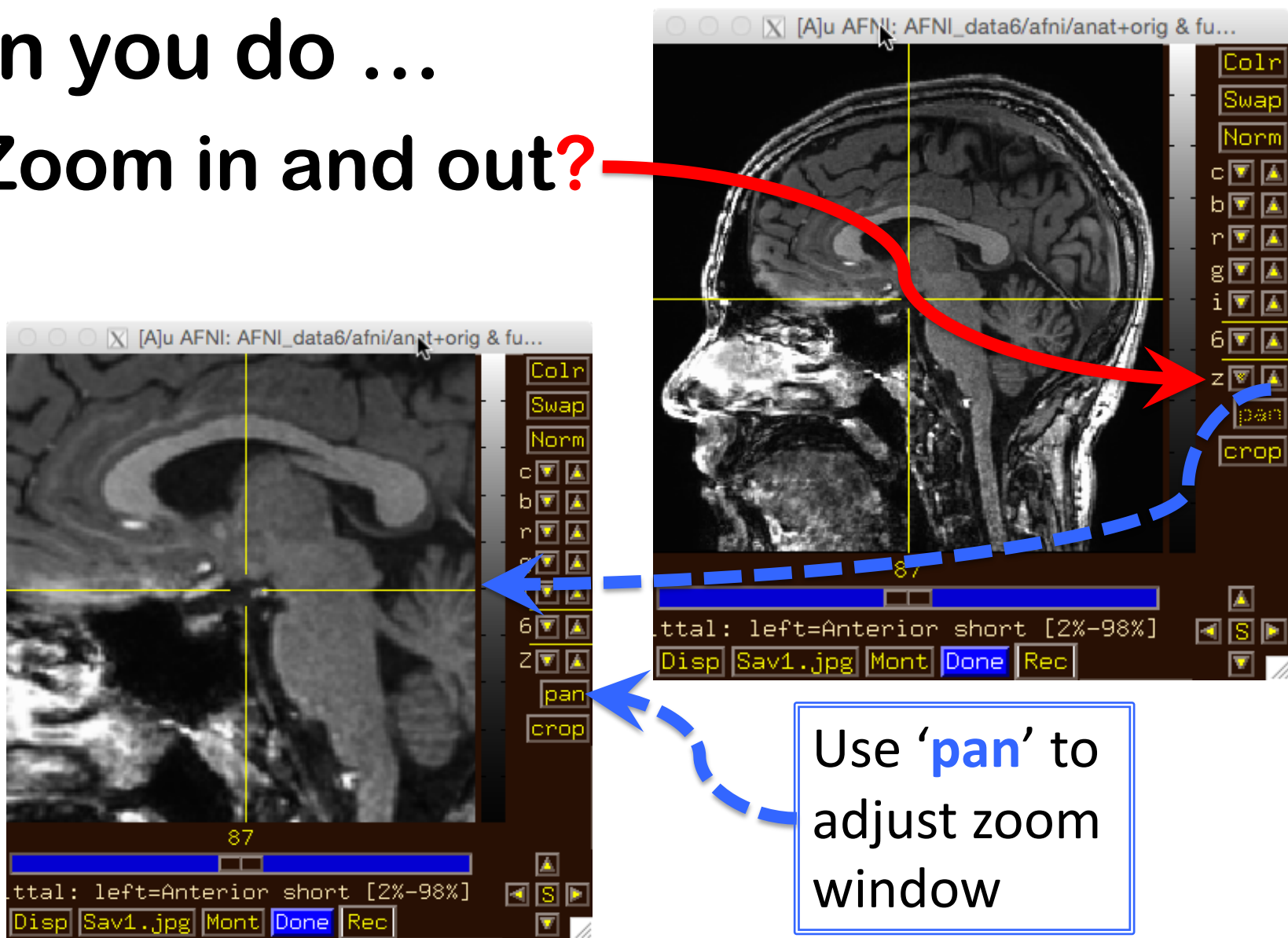


You can also left-click mouse, hold button down, and drag up/down or left/right to change brightness or contrast

- Image viewer #3:
Can you do ...
 - Zoom in and out?



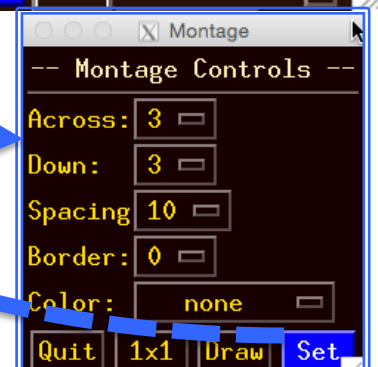
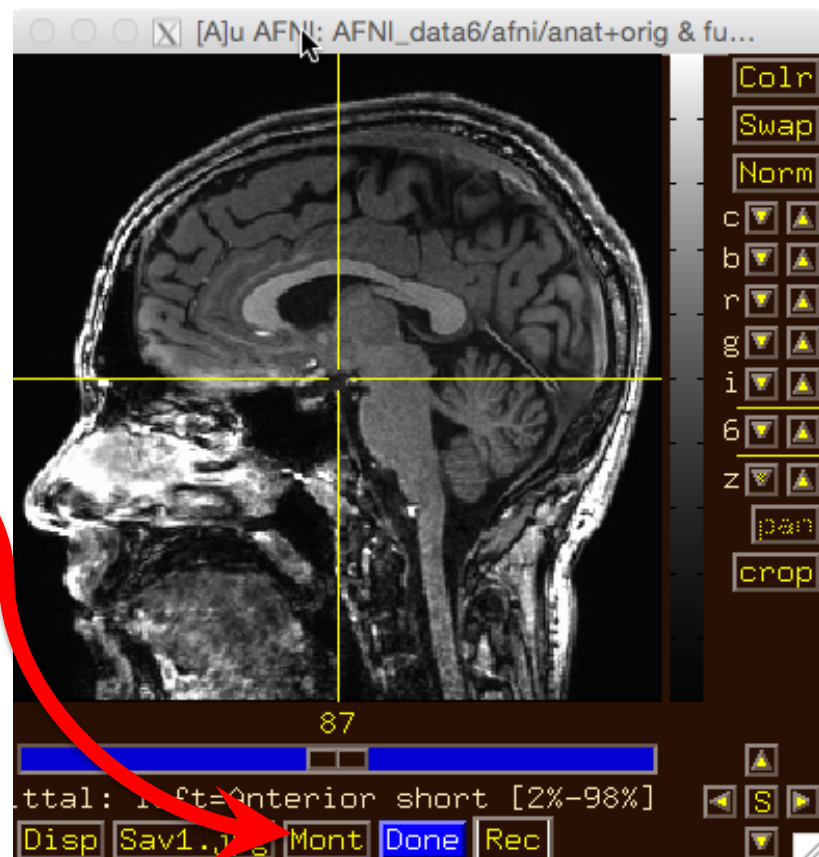
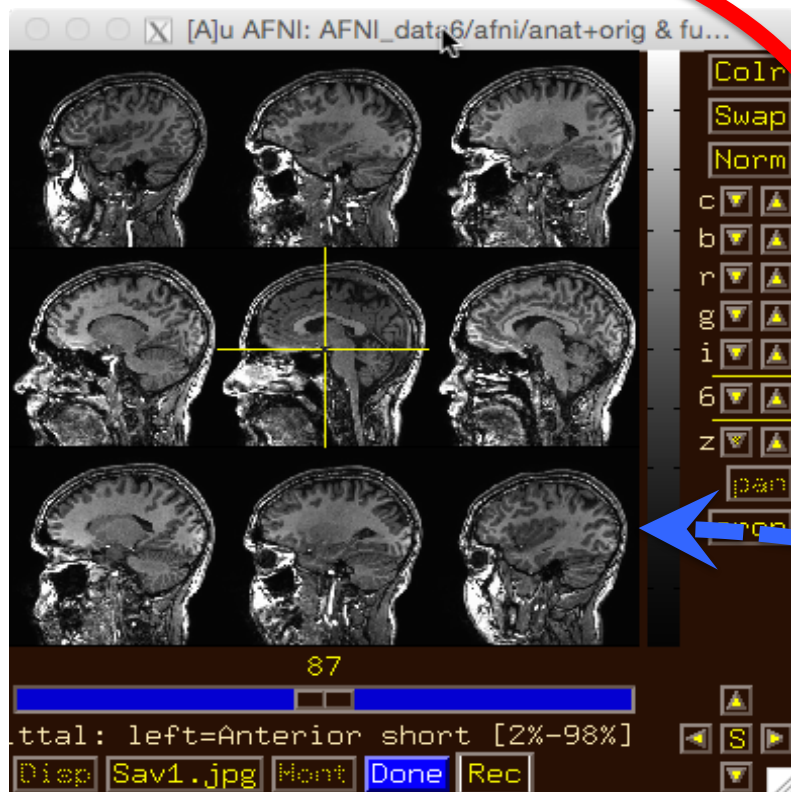
- Image viewer #3:
Can you do ...
 - Zoom in and out?



- Image viewer #4:
Can you do ...
 - Create a 3x3 montage?

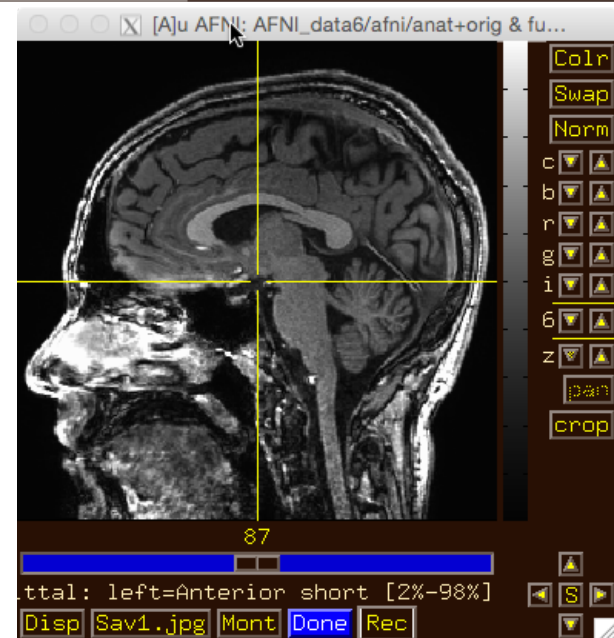


- Image viewer #4:
Can you do ...
 - Create a 3x3 montage?

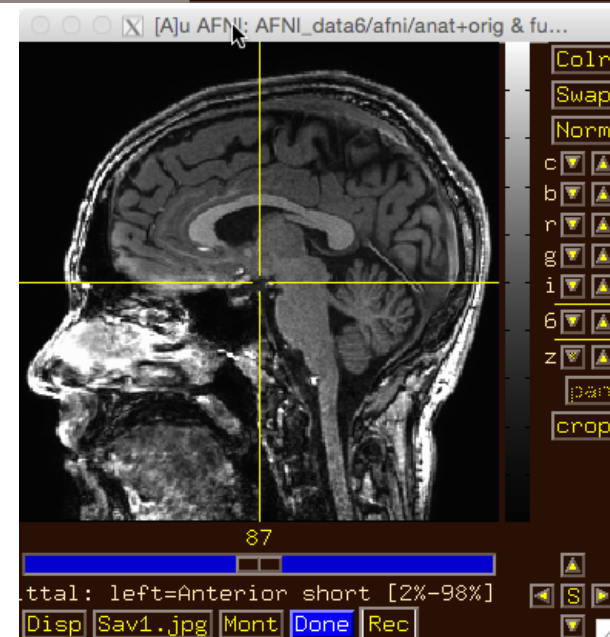


- Try some of the right-click popup menus

– this one is simple: for spatial coordinates

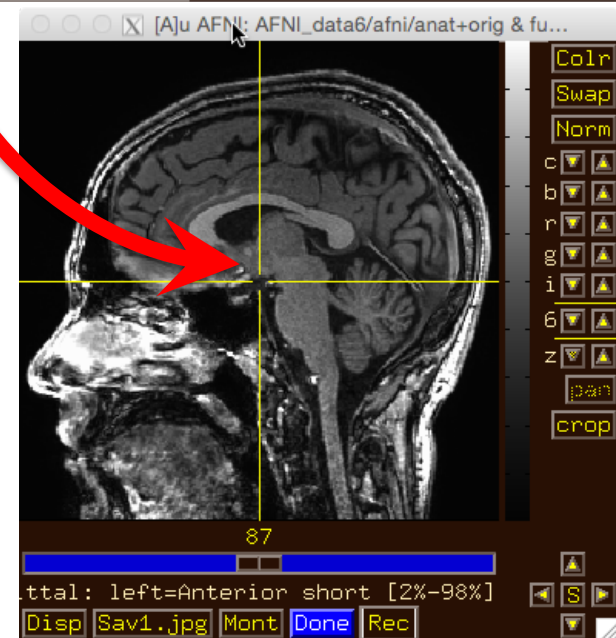


- Try some of the right-click popup menus
- this one is mostly for fun

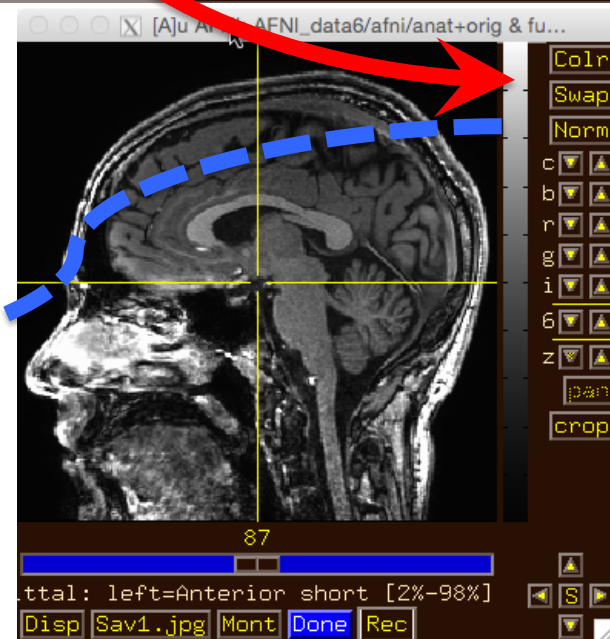
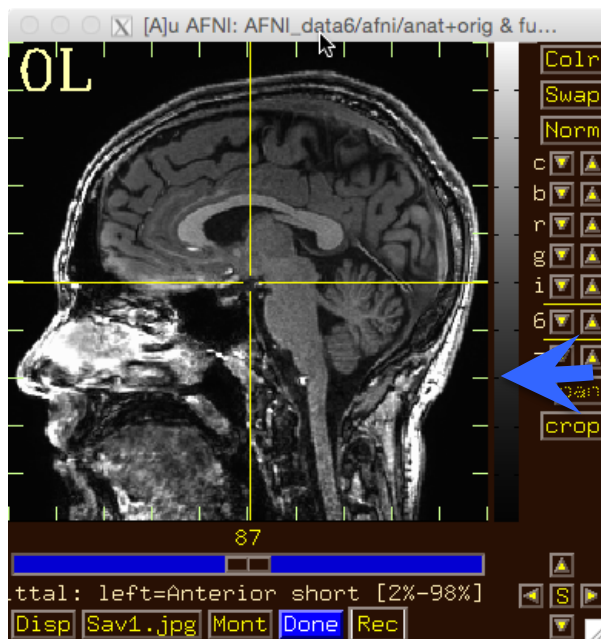


- Try some of the right-click popup menus

–this one has several commonly used functions for image display and navigation



- Try some of the right-click popup menus
- has many rarely used options



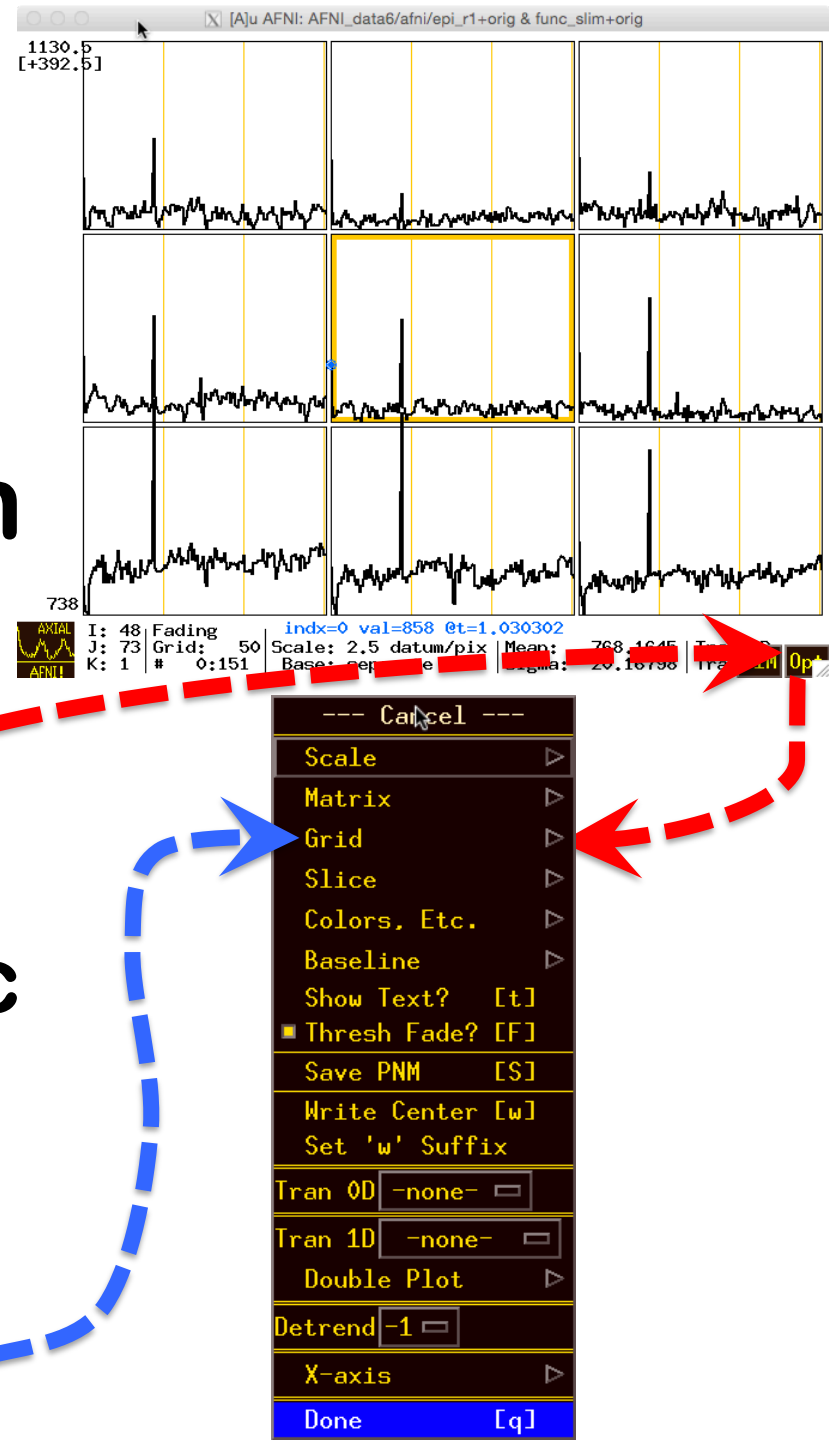
- Try some of the right-click popup menus

menus

- this one is a shortcut for some options on the more complicated ‘Disp’ menu



- What does ‘I’ keypress do to graph? Then ‘i’?
- Use BHelp in graph window
 - Shortcut keys
 - Click **Opt** menu for more shortcuts, etc
- Change vertical **Grid** spacing to 15



That's All for Now

STAY
TUNED FOR
MORE!



KEEP
CALM
AND
CARRY
ON