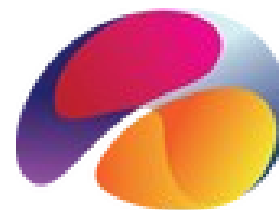




AFNI Bootcamp: November 18-22, 2024

LIBR, Tulsa, OK, USA



| | Monday | Tuesday | Wednesday | Thursday | Friday |
|---|---|---|--|--|---|
| 09:00-09:45 minibreak 09:55-10:40 | AFNI Intro & Brief Unix Glen/Reynolds | Templates, Atlases & ROIs Glen | FMRI Quality Control Examples Glen | Group Analysis Hands-On Chen | Resting State & InstaCorr Reynolds |
| break | | | | | |
| 10:55-11:40 minibreak 11:50-12:30 | Single Subject Analysis Chen | FMRI Analysis: Start-to-Middle (end at 11:45) Reynolds | Group Analysis Chen | SUMA: Surface Analysis Reynolds | Advanced Visualization Glen |
| lunch | | | | | |
| 13:30-14:15 minibreak 14:25-15:10 | AFNI Driving & Interactive Glen | FMRI Analysis: Middle-to-End... (start at 1:15) Reynolds | Advanced Group Analysis Chen | More SUMA Surf Analysis Reynolds | Consultations (BYO data) All (in conf room?) |
| break | | | | | |
| 15:25-16:10 minibreak 16:20-17:00 | Alignment and Registration Glen | ... & FMRI Quality Control Reynolds/Glen | Regression++ & Results Reporting Reynolds/Chen | Command Line Examples Reynolds | Dispersal to the Eight Corners of the Cosmos |

Computer setup: <https://afni.nimh.nih.gov/pub/dist/doc/html/doc/index.html>
Class PDFs: https://afni.nimh.nih.gov/pub/dist/edu/latest/afni_handouts

| <u>Class</u> | <u>Handout(s)</u> |
|---|--|
| • AFNI Intro & Unix (lecture, hands-on): | afni01_intro.pdf, afni30_vol_dset_basics.pdf, dir_struct.pdf, afni00_cmds_unix.txt, |
| • | afni00_unix.pdf, afni00_commands_describe.txt https://afni.nimh.nih.gov/pub/dist/doc/html/doc/educational/unix_tutorial |
| • Single Subject Analysis (lecture): | afni22_indiana.pdf |
| • AFNI Driving & Interactive (hands-on): | afni03_interactive.pdf, AFNI_interactive2.pdf, @Drive_Afni |
| • Alignment and Registration (lecture): | afni10_volreg_talairach.pdf, afni10_volreg_talairach_extras.pdf |
| • Templates, Atlases & ROIs (lecture): | afni50_templates_atlases.pdf, afni11_roi.pdf, afni11_cmds_roi.txt |
| • FMRI Analysis: Start-to-Middle (hands-on): | afni16_start_to_finish.pdf, afni_proc.pdf, afni51_slice_timing.pdf |
| • FMRI Analysis: Middle-to-End (hands-on): | afni16_start_to_finish.pdf |
| • ... & 3dttest++; afni_proc-QC (hands-on): | afni43_qc_afni.pdf |
| • FMRI Quality Control Examples (hands-on): | afni43_qc_afni.pdf |
| • Group Analysis (lecture): | afni32_group_analysis.pdf |
| • Advanced Group Analysis (lecture): | afni32_group_analysis.pdf |
| • Regression++ & Results Rept (hands-on): | afni07_advanced.pdf, afni41_results_reporting.pdf |
| • Group Analysis Hands-on (hands-on): | afni35_GroupAna_HO.pdf |
| • Surface Analysis: SUMA (hands-on): | suma.pdf, suma_keystrokes.txt |
| • More Surface Analysis: SUMA (hands-on): | suma.pdf |
| • Command Line Examples (hands-on): | afni19_cmds_basic.txt |
| • Resting State & InstaCorr (lect/hands-on): | afni23_restingstate.pdf, afni20_instastuff.pdf |
| • Advanced Visualization (lect/hands-on): | advanced_vis_notes.txt |